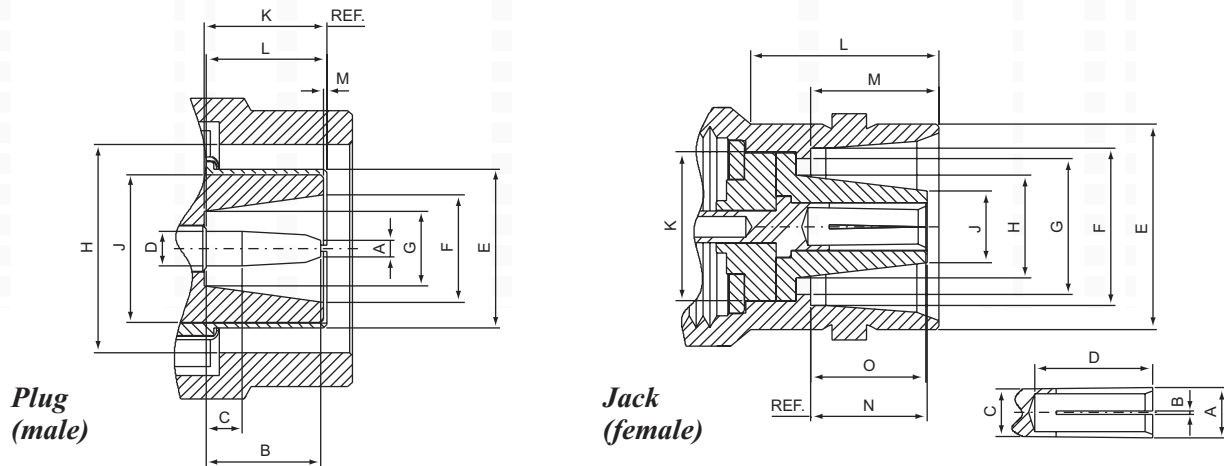


C SERIES CONNECTORS

50 ohm 0-11GHz/75 ohm 0-1.5GHz

Interface Dimensions:

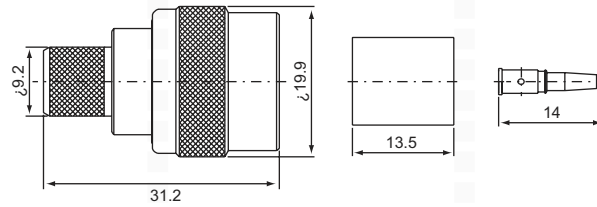


	Plug		Jack	
	min.	max.	min.	max.
A	1.04/.041	1.30/.051	3.34/.1314	3.37/.1326
B	7.65/.301	7.77/.308	0.24/.0095	0.321/.0125
C	2.36/.093	2.62/.103	3.13/.1232	3.22/.1266
D	2.29/.090	2.34/.092	7.77/.306	-
E	10.46/.412	10.52/.414	13.46/.530	13.72/.540
F	7.01/.278	7.11/.280	10.44/.411	10.54/.415
G	4.93/.194	5.03/.198	8.99/.354	9.04/.356
H	13.79/.543	13.94/.549	6.81/.268	6.91/.272
J	9.88/.389	9.90/.390	4.72/.186	4.83/.190
K	7.85/.309	8.08/.318	9.88/.3889	9.89/.3897
L	7.80/.307	7.90/.311	12.57/.495	-
M	0.18/.007	0.33/.013	8.48/.334	8.53/.336
N	-	-	7.70/.303	7.85/.309
O	-	-	7.54/.297	7.75/.305

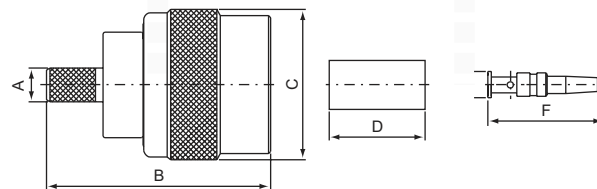
Electrical:

Impedance	50 ohm	75ohm
Frequency Range	0 to 11 GHz	0 to 1GHz
VSWR	Straight: 1.3max ; Right angle: 1.5max	
Insertion Loss	0.3dB max at 10 GHz	

C MALE, Crimp type
C-111B for RG8U(213U)

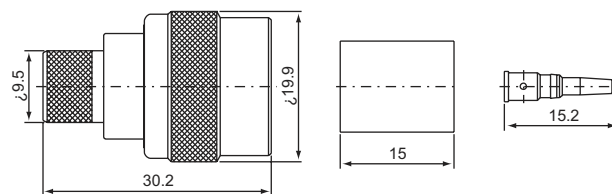


C MALE, Crimp type
C-111

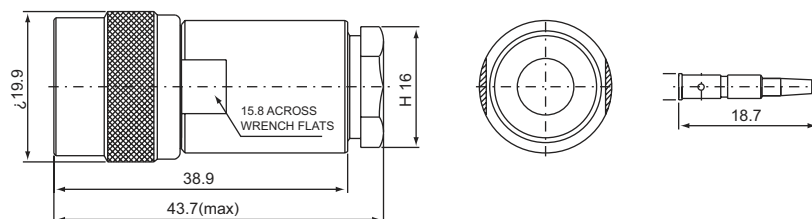


PART NO.	Ω	CABLE TYPE	A	B	C	D	E	F
C-111F	50,75	RG58U	4.5	29.7	19.9	12.7	3.1	15.5
C-111G		RG59U	5.5				3.5	

C MALE, Crimp type
C-111S for RG9913

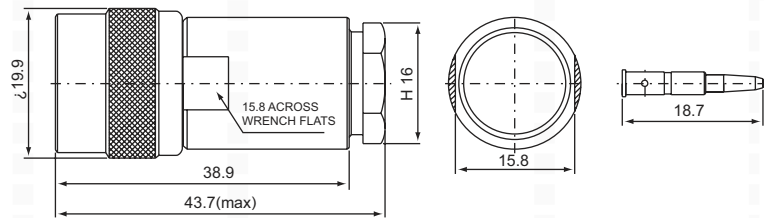


C MALE, Screw-on type
C-112

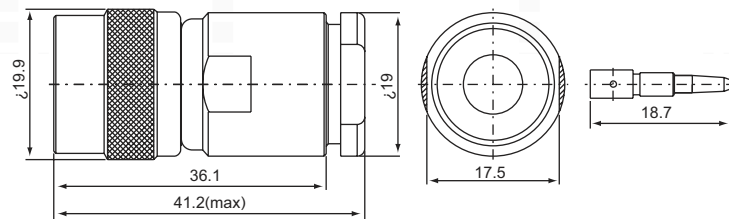


PART NO.	Ω	CABLE TYPE	A
C-112F	50,75	RG58U	3.1
C-112G		RG59U	3.5

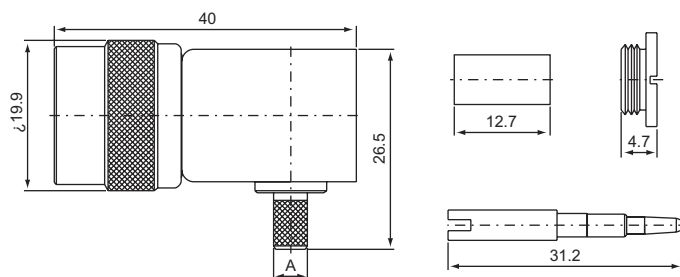
C MALE, Screw-on type
C-112B for RG8U(213U)



C MALE, Screw-on type
C-112S for RG9913

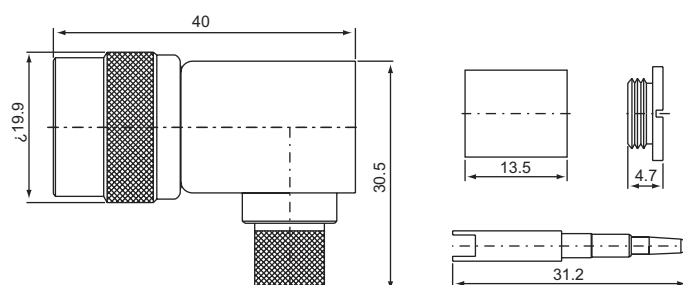


C MALE, Crimp type
C-121 Right angle

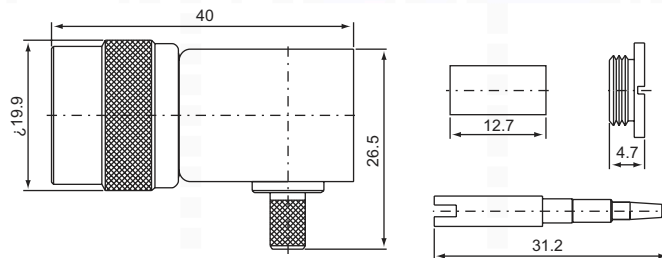


PART NO.	Ω	CABLE TYPE	A
C-121A	50,75	RG6U	6.5
C-121F		RG58U	4.5
C-121G		RG59U	5.5

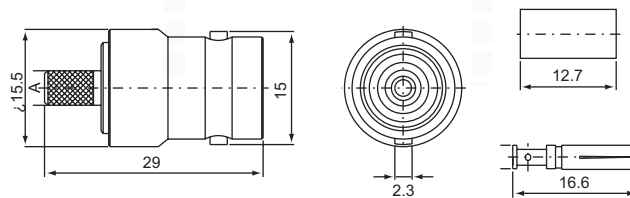
C MALE, Crimp type right angle
C-121C for RG9U(214U)



C MALE, Crimp type right angle
C-121P for RG55U(223U)

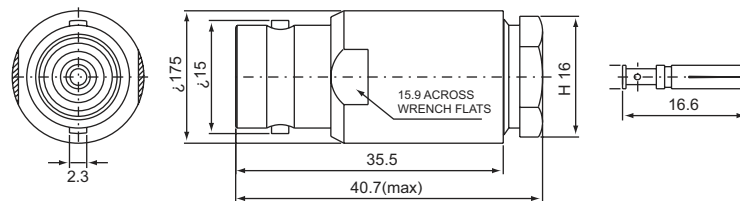


C FEMALE, Crimp type
C-211



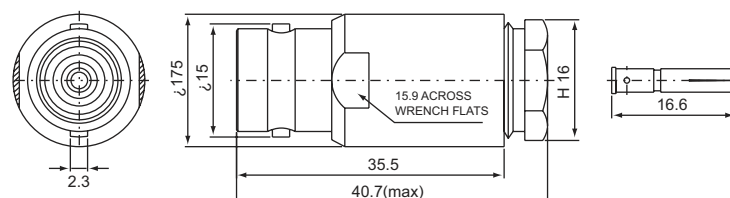
PART NO.	Ω	CABLE TYPE	A
C-211F	50,75	RG58U	4.5
C-211G		RG59U	5.5

C FEMALE, Screw-on type
C-212 Right angle

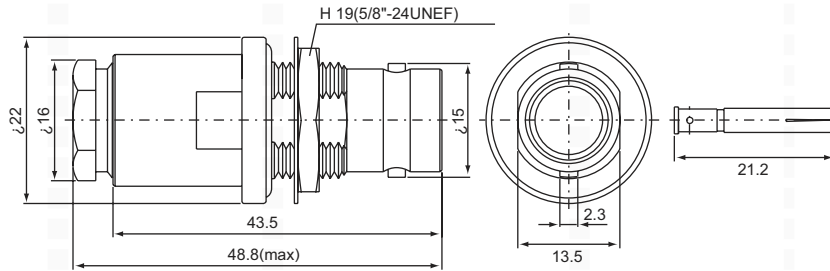


PART NO.	Ω	CABLE TYPE	A
C-212F	50,75	RG58U	3.1
C-212G		RG59U	3.5

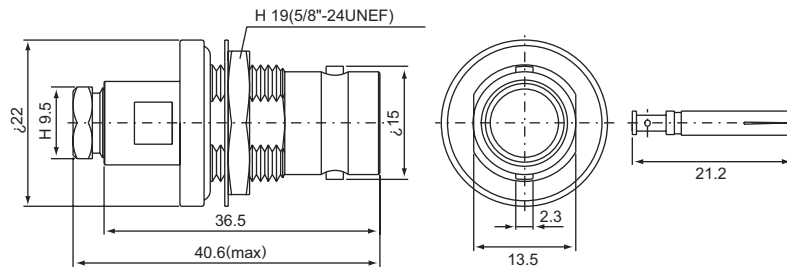
C FEMALE, Screw-on type
C-212B Right angle
for RG8U(213U)



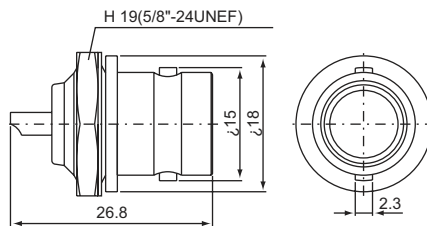
C FEMALE, Screw-on type
C-232B-WP for RG8U(213U)
Bulkhead receptacle



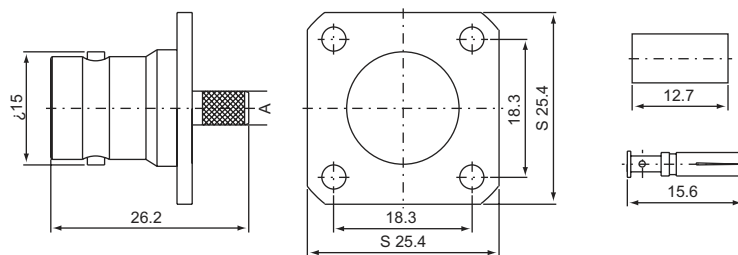
C FEMALE, Screw-on type
C-232F-WP for RG58U
Bulkhead receptacle



C FEMALE, Solder type
C-235 Bulkhead receptacle



C FEMALE, Crimp type
C-241 Panel receptacle



PART NO.	Ω	CABLE TYPE	A
C-241F	50,75	RG58U	4.5
C-241G		RG59U	5.5

C FEMALE, Solder type
C-245 Panel receptacle

