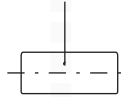


CABLE ASSEMBLY INSTRUCTIONS

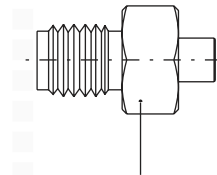
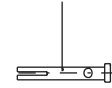
Semi-rigid cable direct solder(1)

P

INSULATOR



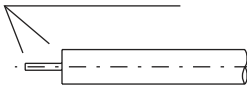
CENTER CONTACT



CONNECTOR BODY

1.

Remove burrs

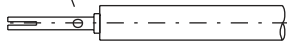


Preparation of cable

- (1) Strip cable to recommended dimensions shown in catalogue.
- (2) Remove any burrs from jacket and center conductor.

2.

Solder

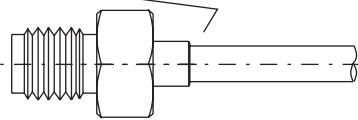


Solder center contact to cable center conductor

- (1) Solder center contact to cable center conductor.
- (2) Remove all excess solder.

3.

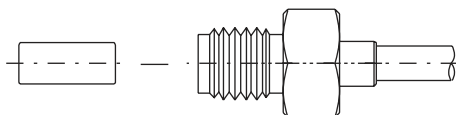
Soft solder all around here



Attach cable to connector body

- (1) Assembly cable and contact into connector body.
- (2) Soft solder cable jacket all around over connector body.

4.



Final assembly

- (1) Press insulator into connector body until it stops.

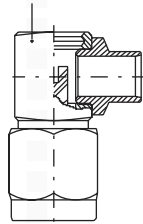
Note:

CABLE ASSEMBLY INSTRUCTIONS

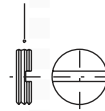
Semi-rigid cable direct solder(2)

Q

MAIN BODY

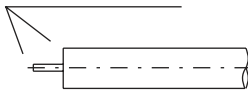


CAP



1.

Remove burrs

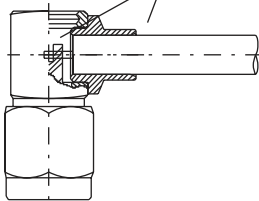


Preparation of cable

- (1) Strip cable to recommended dimensions shown in catalogue.
- (2) Remove any burrs from jacket and center conductor.

2.

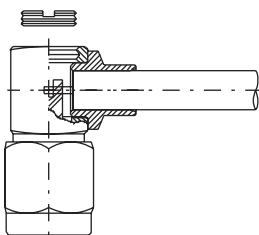
Solder



Solder center contact to cable center conductor

- (1) Insert cable into connector body, and soft solder connector body.
- (2) Solder center contact to cable center conductor.

3.



Final assembly

- (1) Screw cap into opening in front of connector body until it stops.

Note: