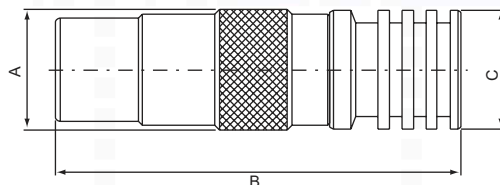


EUROPEAN (IEC/PAL) SERIES CONNECTORS

EUROPEAN MALE, Crimp OD=10.8mm

E-114

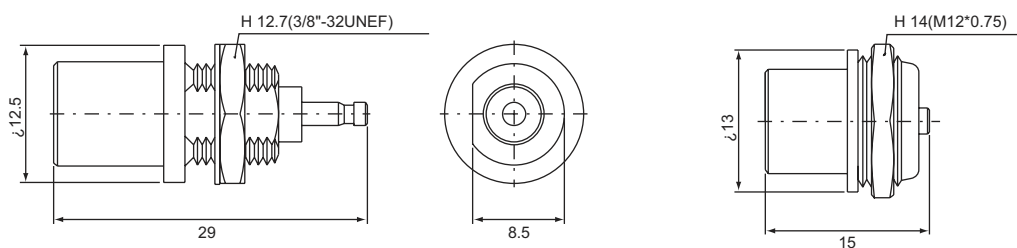


PART NO.	Ω	CABLE TYPE	A	B	C
E-114BA/0.36	50	RG6U	11	37	10.8
E-114BG/0.36		RG59U			
E-114BA/6Q		RG6Q			
E-114BG/59Q		RG59Q			
E-114BA/9.5	50	RG6U	11	37	9.5
E-114BG/9.5		RG59U			

EUROPEAN MALE, Solder type
Bulkhead receptacle

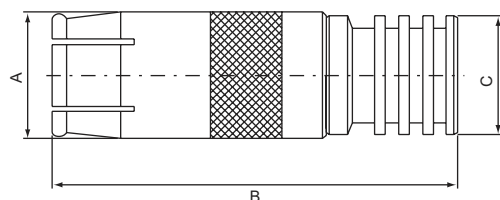
E-135-1

E-135



EUROPEAN FEMALE, Crimp OD=10.8mm

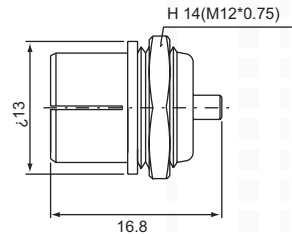
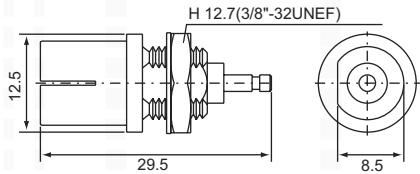
E-214



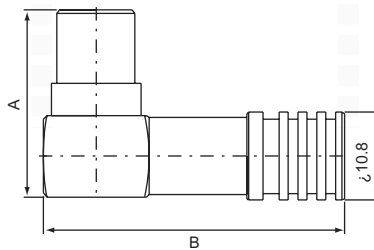
PART NO.	Ω	CABLE TYPE	A	B	C
E-214BA/0.36	50	RG6U	11.5	37	10.8
E-214BG/0.36		RG59U			
E-214BA/6Q		RG6Q			
E-214BG/59Q		RG59Q			
E-214BA/9.5	50	RG6U	11.5	37	9.5
E-214BG/9.5		RG59U			

EUROPEAN FEMALE, Solder type
Bulkhead receptacle
E-235

E-235-1

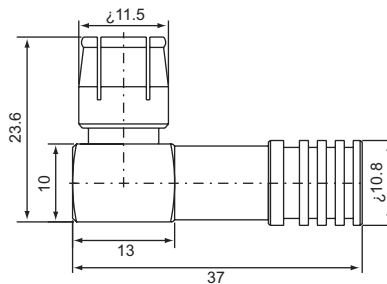


EUROPEAN MALE, Crimp type
OD=10.8mm
E-411



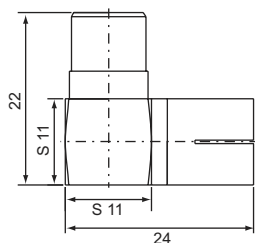
PART NO.	Ω	CABLE TYPE	A	B
E-411BA/0.36/1	50	RG6U	23	37
E-411BG/0.36		RG59U		

EUROPEAN MALE, Crimp type
OD=10.8mm
E-422

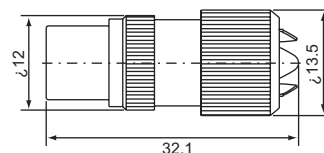


PART NO.	Ω	CABLE TYPE
E-422BA/0.36	50	RG6U
E-422BG/0.36		RG59U

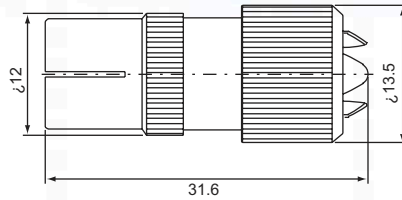
EUROPEAN FEMALE, Screw-on type
E-412



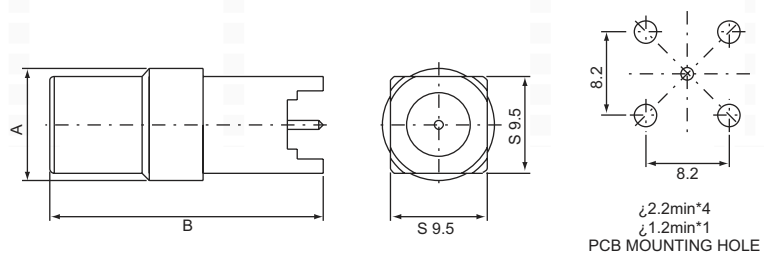
EUROPEAN MALE, Screw-on type
TV coaxial plug
E-M112



EUROPEAN FEMALE, Screw-on type
TV coaxial jack
E-M212

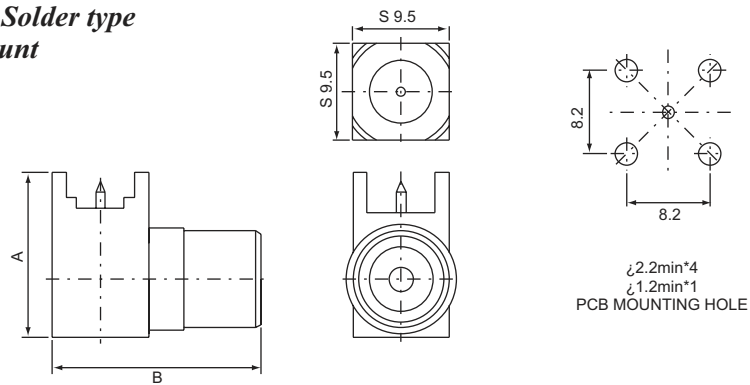


EUROPEAN MALE, Solder type
Straight contact
E-P115



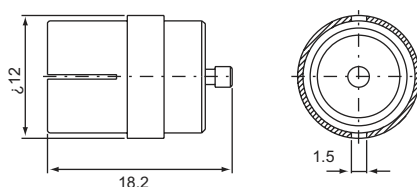
PART NO.	Ω	CABLE TYPE	A	B
E-P115	50	WELDING SPOT	11	26.8
E-P115-1				31.3

EUROPEAN MALE, Solder type
Right angle P.C.B mount
E-P125

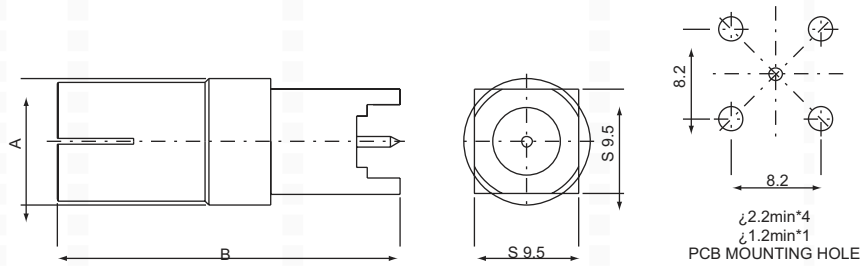


PART NO.	Ω	A	B
E-P125-1	50	16	20.5
E-P125-2A		16.5	20.5

EUROPEAN FEMALE, Solder type
P.C.B mount
E-P215

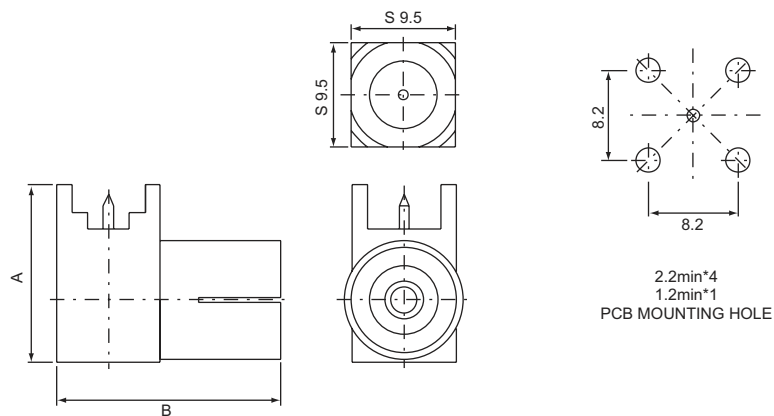


EUROPEAN FEMALE, Solder type
Straight contact
E-P2150



PART NO.	Ω	A	B
E-P2150	50	11.5	26.8
E-P2150-2A			31.3

EUROPEAN FEMALE, Solder type
Right angle contact
E-P225



PART NO.	Ω	A	B
E-P225-1A	50	16	20.5
E-P225-2A		16.5	20.5