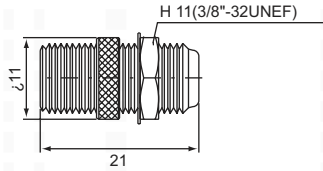
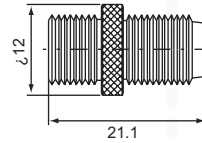


# F SERIES ADAPTERS

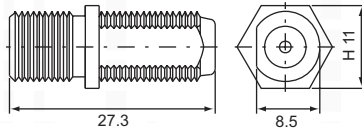
*double F female*  
**F-81K / F-81K-NW (75Ω)**



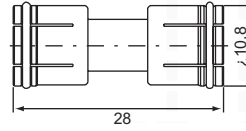
*double F female*  
**F-81K-1 (75Ω)**



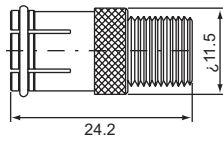
*double F female*  
**F-81L-D-1B (75Ω)**



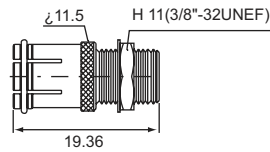
*double F quick male*  
**F-301 (75Ω)**



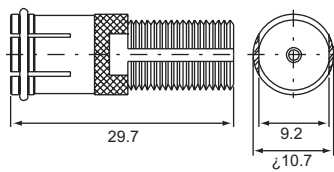
*F quick male-F female*  
**F-302 (75Ω)**



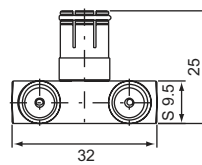
*F quick male-F female*  
**F-302-2 / F-302NW-2 (75Ω)**



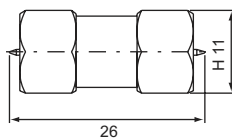
*F quick male-F female*  
**F-302 D/D-14 (75Ω)**



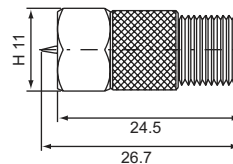
*F quick male-double F female, L type*  
**F-L302 (75Ω)**



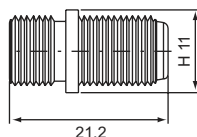
*double F male*  
**F-311 (75Ω)**



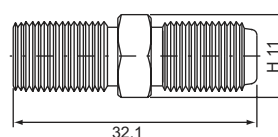
*F male-F female*  
**F-312 (75Ω)**



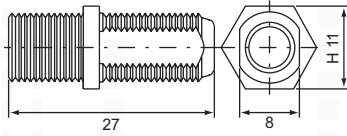
*F female Bulkhead receptacle*  
**F-332 (75Ω)**



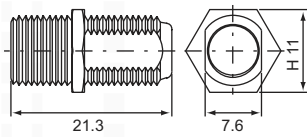
*F female Bulkhead receptacle*  
**F-332-1-H11 (75Ω)**



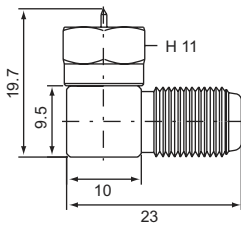
**F female Bulkhead receptacle**  
**F-332-27 D/D (75Ω)**



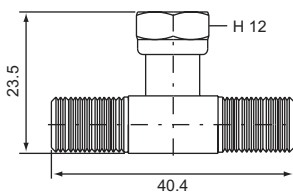
**F female Bulkhead receptacle**  
**F-332 D/D-L (75Ω)**



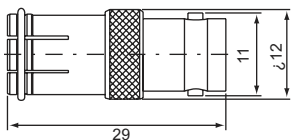
**F male-F female right type**  
**F-412 (75Ω)**



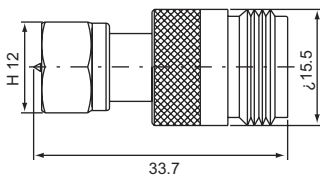
**double F female-Single F male, T type**  
**F-512 (75Ω)**



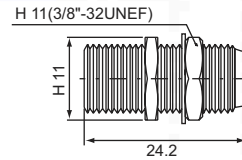
**F quick male-BNC female**  
**FB-302 (75Ω)**



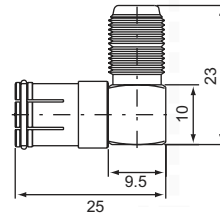
**F male-N female**  
**FN-312 (75Ω)**



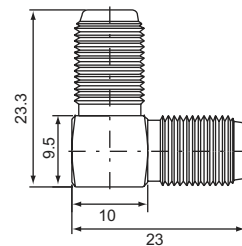
**F female Bulkhead receptacle**  
**F-332-24 (75Ω)**



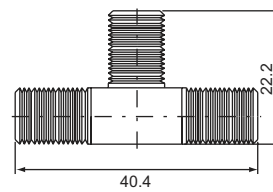
**F quick male-F female, right type**  
**F-402**



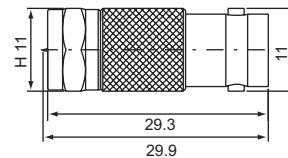
**double F female right angle**  
**F-422 (75Ω)**



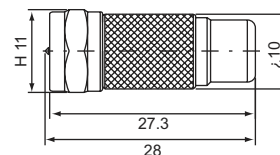
**three F female, T type**  
**F-522 (75Ω)**



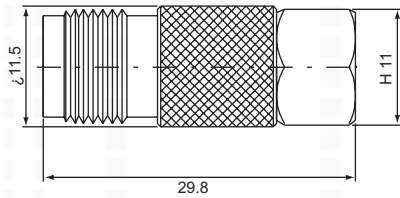
**F male-BNC female**  
**FB-312 (75Ω)**



**F male-RCA female**  
**FR-312 (75Ω)**



*F male-TNC female*  
**FT-312 (75Ω)**



*F male-UHF female*  
**FU-312 (75Ω)**

