

MMCX SERIES CONNECTORS

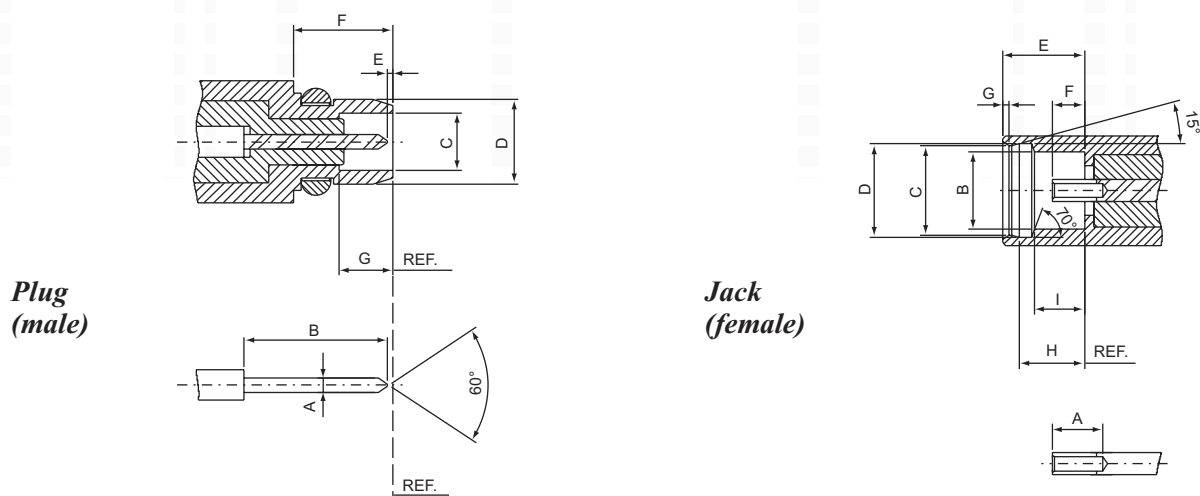
50 ohm 0-6GHz

The MMCX connectors are designed for the small size, they're can be used in applications from DC to 6 GHz and provide repeatable performance.

They're reliable "snap-on" coupling mechanism which is also responsible for transferring excellent electrical parameters during use.

Owing to the non-slotted outer conductor, the MMCX series has a low RF-leakage.

Interface Dimensions:

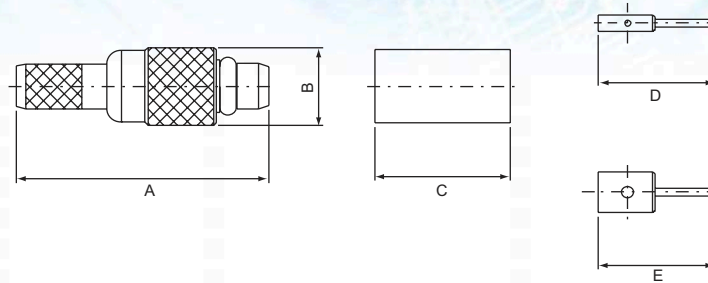


	Plug		Jack	
	min.	max.	min.	max.
A	0.38/.015	0.42/.017	1.40/.055	-
B	-	3.15/.124	2.41/.095	-
C	1.58/.062	1.62/.064	2.88/.113	2.90/.114
D	-	2.40/.094	3.00/.118	3.04/.120
E	0.00/.000	3.15/.124	2.60/.102	
F	2.70/.106	-	0.90/.035	1.20/.047
G	1.45/.057	-		0.23/.009
H	-	-	2.30/.091	2.34/.092
I	-	-	1.57/.062	1.63/.064

Electrical:

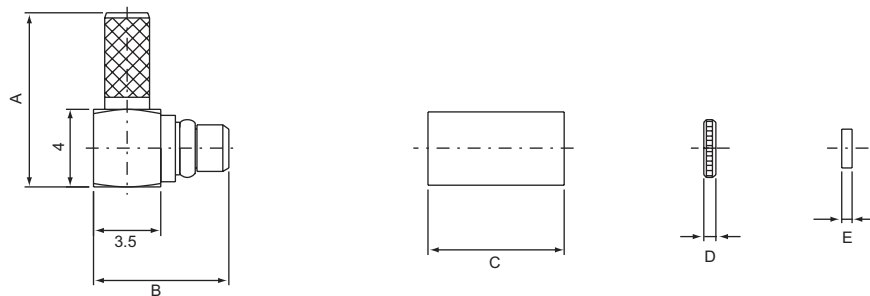
Impedance	50 ohm
Frequency Range	0 to 6.0 GHz
VSWR	1.2max GHz(Straight)
	1.3max GHz(Right angle)
Insertion Loss	0.2dB max @ 1GHz(Straight)
	0.3dB max @ 1GHz(Right angle)

MMCX MALE, Crimp type
13-111



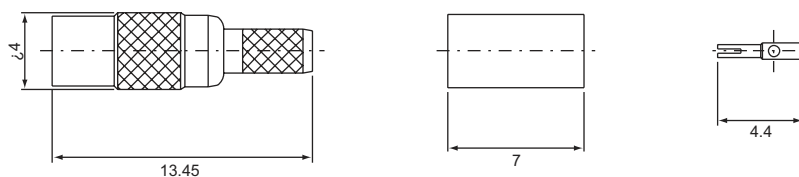
PART NO.	Ω	CABLE TYPE	A	B	C	D	E
13-111L	50	RG174U(316U)	13	4	7	6.05	
13-111M		RG178U	13.05	4	7	6.05	
13-111N		RG179U					
13-111/HF50		HF50	14.4	7	10		6.05

MMCX MALE, Crimp type
13-121



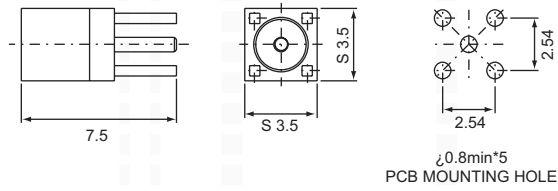
PART NO.	Ω	CABLE TYPE	A	B	C	D	E
13-121L	50	RG174U(316U)	9	7.05	7	0.6	
13-121M-1		RG178U	9	7.05	7	0.6	
13-121N		RG179U					
13-1210L		RG174U(316U)	9	10	7	0.6	0.5

MMCX FEMALE, Crimp type
13-211

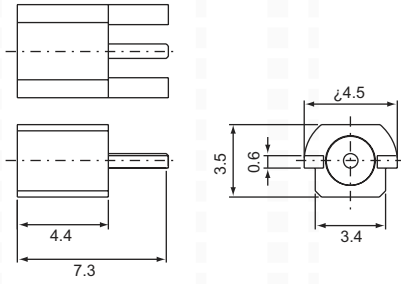


PART NO.	Ω	CABLE TYPE
13-211L	50	RG174U(316U)
13-211M		RG178U
13-211N		RG179U

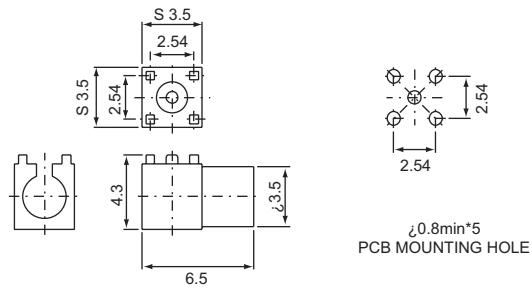
MMCX FEMALE, Solder type
13-P215 PCB mount



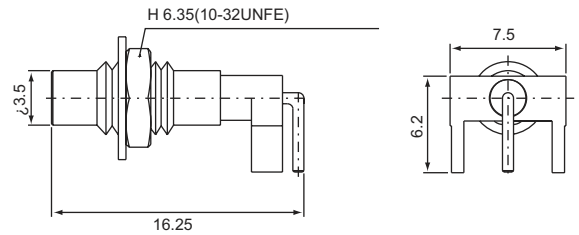
MMCX FEMALE, Solder type
13-P215-1A-2 PCB mount



MMCX FEMALE, Solder type right angle
13-P225 Surface mount

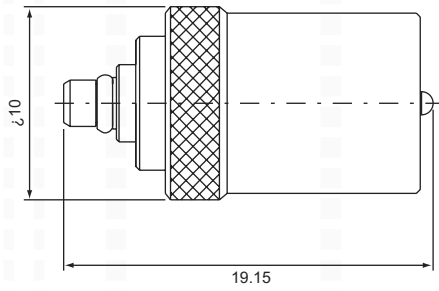


MMCX FEMALE, Solder type right angle
13-P225-1B PCB mount

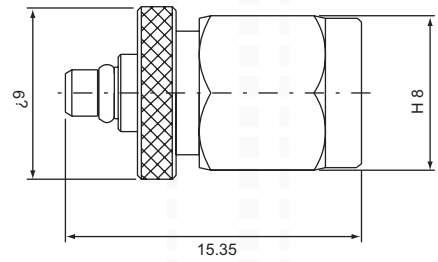


MMCX SERIES ADAPTERS

MMCX male-FME male
13N1-311 (50Ω)



MMCX male-SMA male
13S-311 (50Ω)



MMCX male-SMA female
13S-312 (50Ω)

