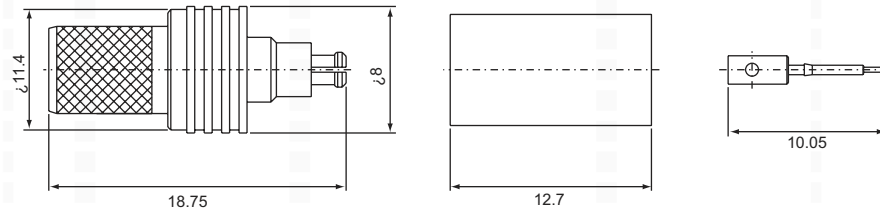


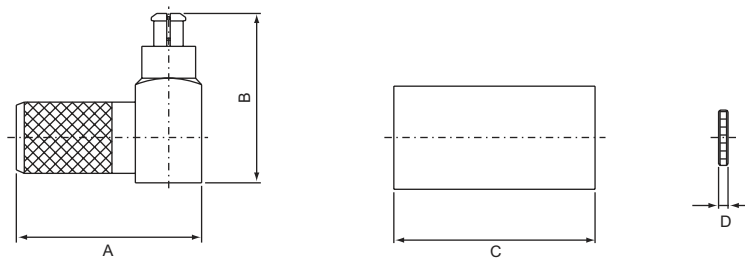
# MC-CARD SERIES CONNECTORS

## MC-CARD MALE, Crimp type 17-111



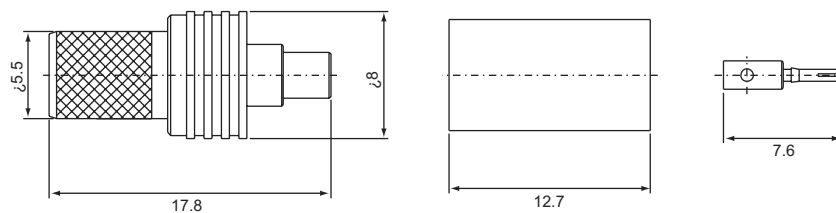
PART NO.	$\Omega$	CABLE TYPE
17-111L	50	RG174U(316U)
17-111-RLF5		RLF5

## MC-CARD MALE, Crimp type 17-121 right angle



PART NO.	$\Omega$	CABLE TYPE	A	B	C	D
17-121F	50	RG58U	11.7	10.7	12.7	0.6
17-121L		RG174U(316U)	9.6	8.9	7	0.6
17-121M		RG178				
17-121U		BT3002				
17-121/RLF5		RLF5	11.7	11.6	12.7	0.6

## MC-CARD FEMALE, Crimp type 17-211



PART NO.	$\Omega$	CABLE TYPE
17-211L	50	RG174U(316U)
17-211-RLF5		RLF5