

# mini **UHF** SERIES CONNECTORS

## 50 ohm 0-2.5GHz

Mini-UHF coaxial connectors are popular and economical, they're used in applications from DC to 2.5 GHz and combine excellent electrical characteristics, small size and light weight at a relatively low priced for many coaxial applications.

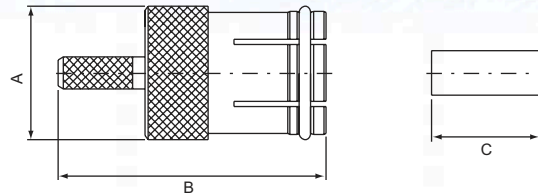
These miniature 3/8"-24 thread size connectors are provide excellent RF performance and impedance matched to 50 ohm cable, the Mini-UHF series are available crimp, twist-on and solder terminations.

### Electrical:

Impedance	non-constant
Frequency Range	0 to 2.5 GHz
VSWR	1.25max GHz (Straight) ; 1.35max GHz (Right angle)

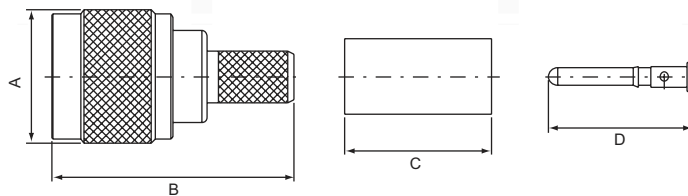


**Mini UHF QUICK MALE, Crimp type**  
**M-101**



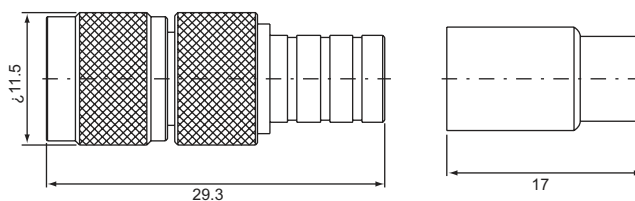
PART NO.	$\Omega$	CABLE TYPE	A	B	C
M-101F	50	RG58U	11	21	12.7
M-101G		RG59U			

**Mini UHF MALE, Crimp type**  
**M-111**



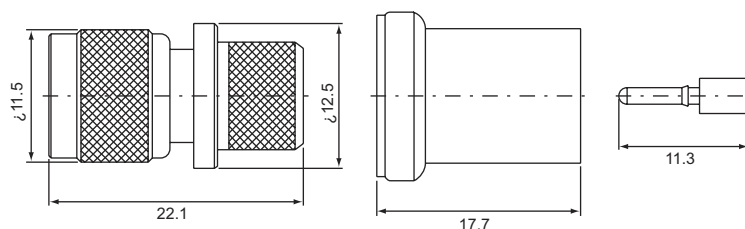
PART NO.	$\Omega$	CABLE TYPE	A	B	C	E
M-111F	50	RG58U	11.5	21	12.7	12.5
M-111G		RG59U				
M-111/H155		H155				

**Mini UHF MALE, Crimp type**  
**M-111/2PCS**

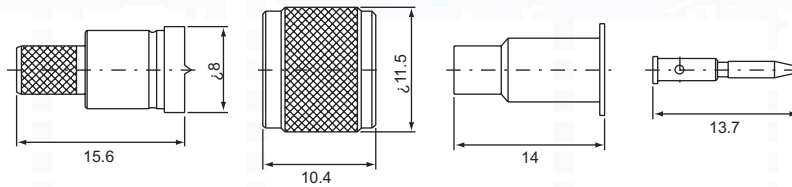


PART NO.	$\Omega$	CABLE TYPE
M-111A/2PCS	50	RG6U
M-111F/2PCS		RG58U
M-111G/2PCS		RG59U

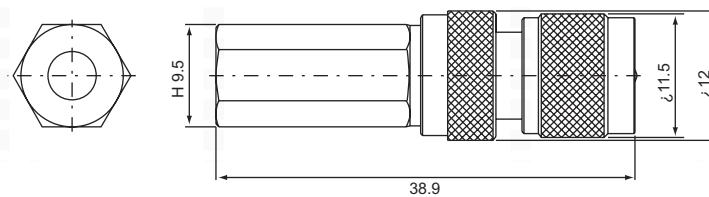
**Mini UHF MALE, Crimp type**  
**M-111B for RG213U**



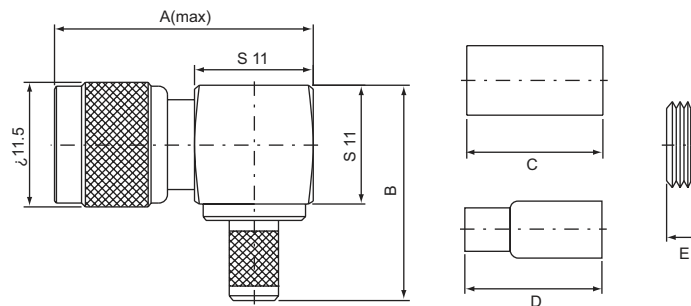
**Mini UHF MALE, Crimp type**  
**M-P111 for RG58U**



**Mini UHF MALE, Twist-on type**  
**M-113**

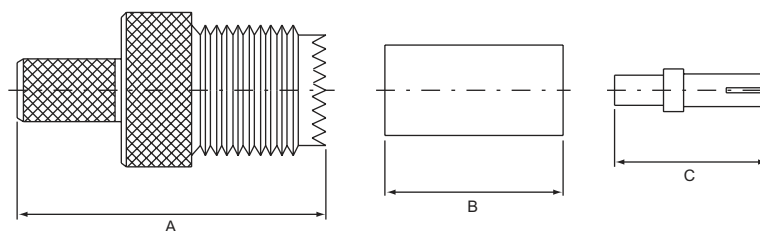


**Mini UHF MALE, Twist-on type**  
**M-121 Right angle**



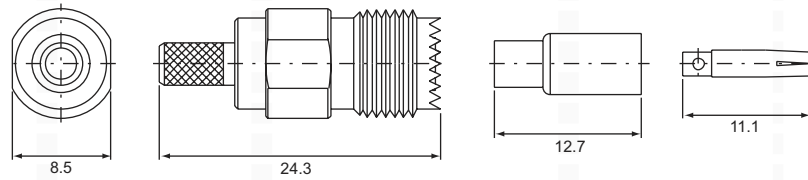
PART NO.	$\Omega$	CABLE TYPE	A	B	C	D	E
M-211A	50,75	RG6U	24	20	12.7	/	3.6
M-211F		RG58U					
M-211G		RG59U					
M-211L	50,75	RG174U(316U)	24	20	/	12.7	3.6

**Mini UHF FEMALE, Crimp type**  
**M-211**

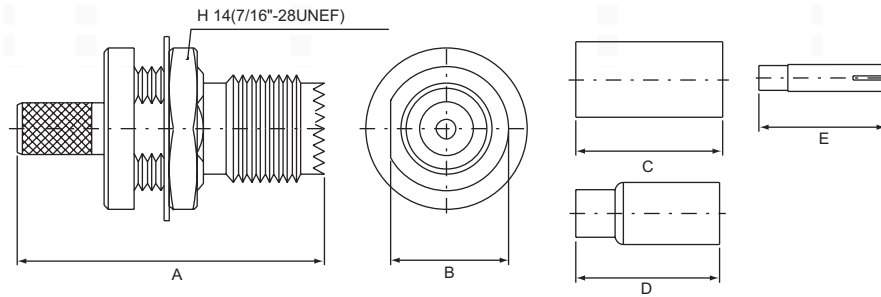


PART NO.	$\Omega$	CABLE TYPE	A	B	C
M-211A	50	RG6U	22.1	12.7	11
M-211F		RG58U			
M-211G		RG59U			

**Mini UHF FEMALE, Crimp type**  
**M-211L for RG174U(316U)**

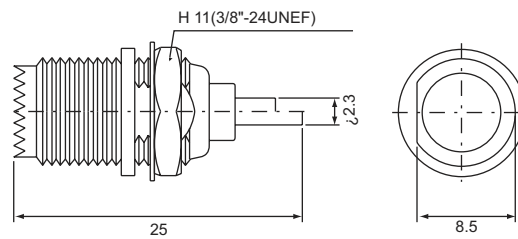


**Mini UHF FEMALE, Crimp type**  
**Bulkhead receptacle**  
**M-231**

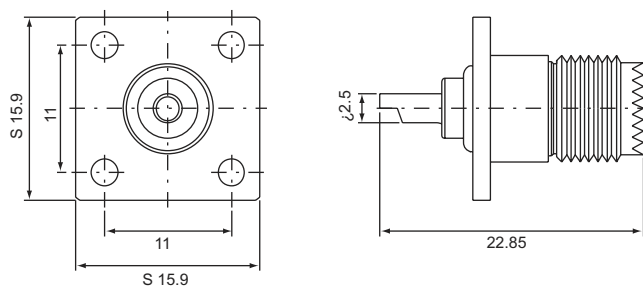


PART NO.	$\Omega$	CABLE TYPE	A	B	C	D	E
M-231F	50	RG58U	26.6	10.2	12.7	/	11.1
M-231G		RG59U					
M-231L	50	RG174U(316U)	27.2	10.2		12.4	11.1

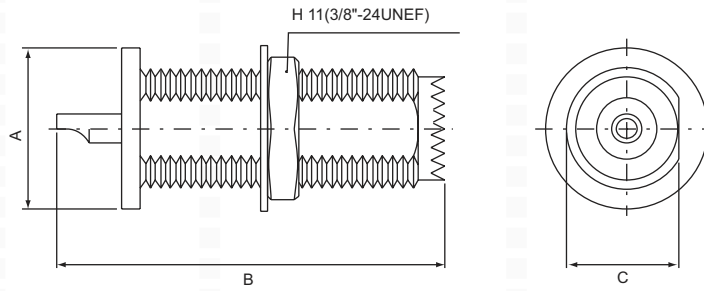
**Mini UHF FEMALE, Solder type**  
**Bulkhead receptacle**  
**M-235**



**Mini UHF FEMALE, Solder type**  
**Panel receptacle**  
**M-245**

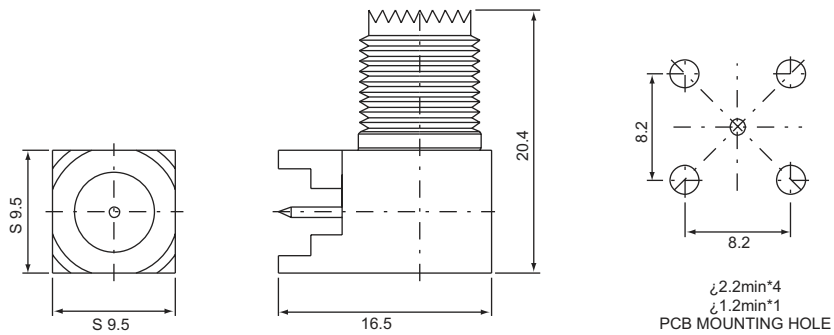


**Mini UHF FEMALE, Solder type**  
**M-B215**

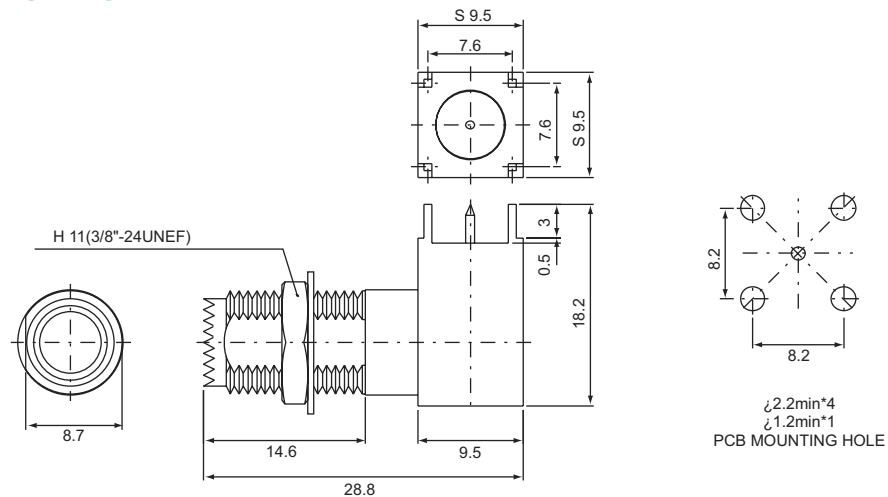


PART NO.	$\Omega$	CABLE TYPE	A	B	C
M-B215	50	WELDING SPOT	12.5	23.2	8.7
M-B215-1				30	

**Mini UHF FEMALE, P.C.B mount**  
**M-P225 right angle**

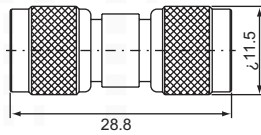


**Mini UHF FEMALE, P.C.B mount**  
**M-P225-1B right angle**

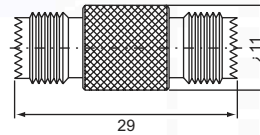


# mini UHF SERIES ADAPTERS

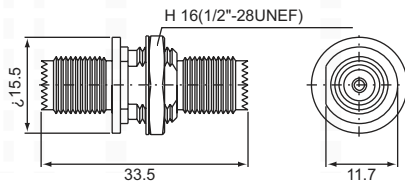
*double Mini UHF male*  
**M-311 (50Ω)**



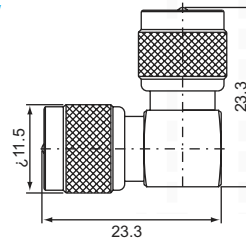
*double Mini UHF female (50Ω)*  
**M-322**



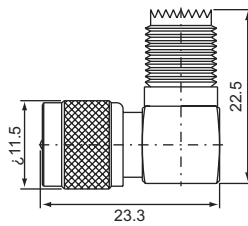
*double Mini UHF female bulkhead receptacle*  
**M-332 (50Ω)**



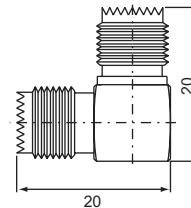
*double Mini UHF male right angle (50Ω)*  
**M-411**



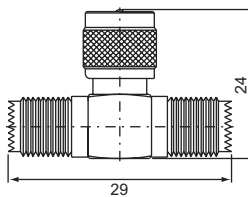
*Mini UHF male-Mini UHF female, right angle (50Ω)*  
**M-412**



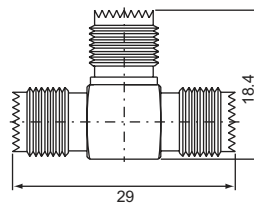
*double Mini UHF female right angle (50Ω)*  
**M-422**



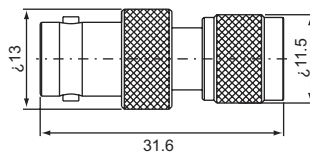
*single Mini UHF male-double UHF female T type (50Ω)*  
**M-512**



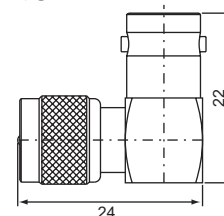
*three Mini UHF female T type (50Ω)*  
**M-522**



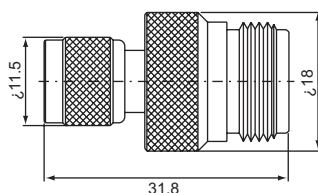
*Mini UHF male-BNC female (50Ω)*  
**MB-312**



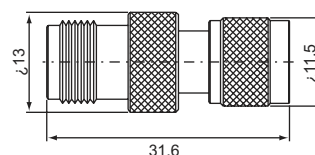
*Mini UHF male-BNC female (50Ω)*  
**MB-412**



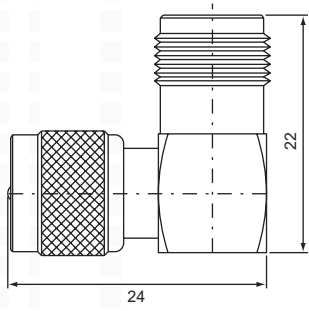
*Mini UHF male-N female*  
**MN-312 (50Ω)**



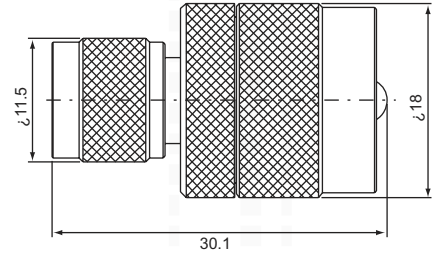
*Mini UHF male-TNC female*  
**MT-312 (50Ω)**



**Mini UHF male-TNC female**  
**MT-412 (50Ω)**



**Mini UHF male-UHF male**  
**MU-311 (50Ω)**



**Mini UHF male-UHF female**  
**MU-312 (50Ω)**

