

N SERIES CONNECTORS

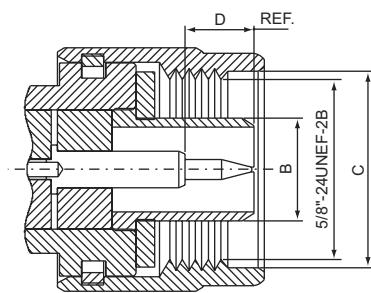
50 ohm 0-11GHz/75 ohm 0-1.5GHz

N series coaxial is impedance matched to 50 ohm cable and they are medium-sized. The threaded coupling ensures proper mating in applications where shock and extreme vibration are designed considerations and for use from DC to 11GHz.

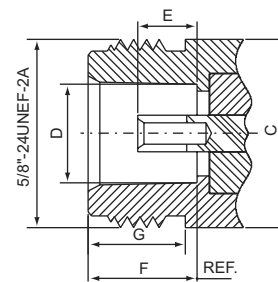
Their consistently low broadband VSWR have made them popular over the years in many applications.

Cable terminations are available in crimp, clamp and solder configurations. they're used in aerospace, broadcast, audio and video applications as well as many microwave components such as filters, couplers, amplifiers and attenuators to kind a handful.

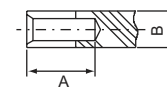
Interface Dimensions:



Plug (male)



Jack (female)

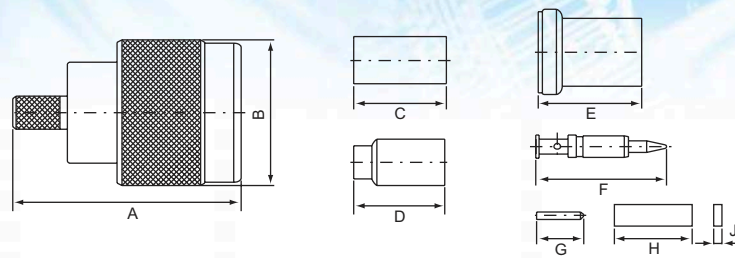


	Plug		Jack	
	min.	max.	min.	max.
A	1.60/.063	1.68/.066	5.33/.210	-
B	-	8.38/.330	3.00/.118	3.15/.124
C	16.00/.630	-	-	15.93/.627
D	5.33/.210	5.84/.230	8.03/.316	8.13/.320
E	-	3.15/.124	4.75/.187	5.26/.207
F	-	-	9.04/.056	9.19/.362
G	-	-	6.76/.266	-

Electrical:

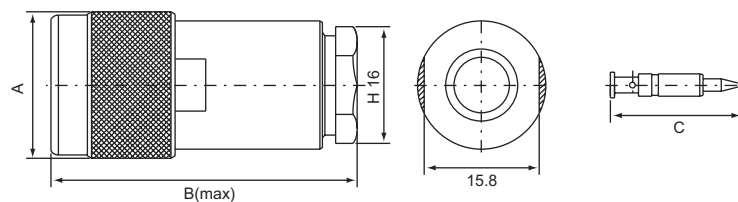
Impedance	50 ohm	75ohm
Frequency Range	0 to 11.0 GHz	0 to 1.5GHz
VSWR	Straight: 1.3max ; Right angle: 1.5max	
Insertion Loss	0.3dB max at 10GHz	

N MALE, Crimp type
N-111



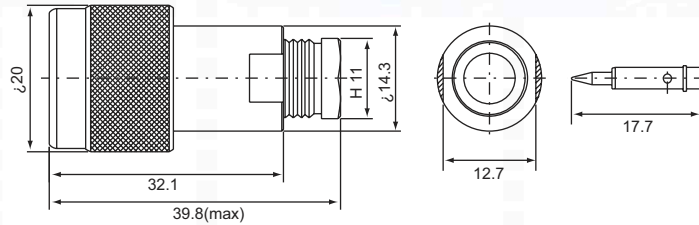
PART NO.	Ω	CABLE TYPE	A	B	C	D	E	F	G	H	J
N-111-8D	50,75	8D-FB	33	20	13.5			18			
N-111A	50,75	RG6U	31.3	20	12.7			18			
B-111F		RG58U									
N-111G		RG59U									
N-111P		RG55U(223U)									
N-111B	50,75	RG213U	30.6	20	13.5			18			
N-111C		RG214U									
N-111B-1	50,75	RG213U	36.8	20			18	18			
N111-H155	50,75	H155	31.3	20	12.7			18			
N-111L	50,75	RG174U(316U)	31.1	20		12.4		18			
N-111L-1	50,75	RG174U(316U)	31.1	20	9.5				6.5		
N-111L-2	50,75	RG174U(316U)	31.1	20		12.4		18		12	
N-111L-3	50,75	RG174U(316U)	31.1	20		12.4		18		10.7	12
N-111-LMR200	50,75	LMR200	30	20	12.7			18			
N-111/RLF5	50,75	RLF5	31.3	20	12.7			18			
N-111/RLF7		RLF7									
N-111S	50,75	9913	30	20	15			18.6			

N MALE, Screw-on type
N-112

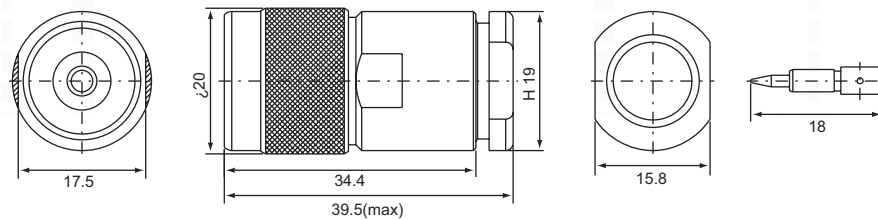


PART NO.	Ω	CABLE TYPE	A	B	C
N-112-5C	50,75	5C-2V	20	41.7	18
N-112-7C	50,75	7C-2V	20	42.5	18
N-112-8D	50,75	8D-2V	20	42.2	18
N-112/10D-1	50,75	10D-2V	20	42	18
N-112B	50,75	RG213U	20	42.5	18
N-112-C	50,75	RG214U	20	42.5	18
N-112F	50,75	RG58U	20	42.5	18
N-112G	50,75	RG59U	20	38.5	18
N-112/H155	50,75	H155	20	41.7	18
N-112-H500	50,75	H500	20	42.3	18.6
N-112/RLF5	50,75	RLF5	20	41.7	18
N-112/RLF7		RLF7			

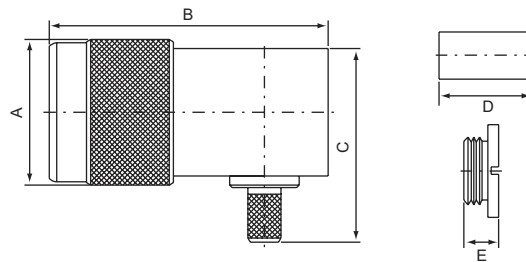
N MALE, Screw-on type
N-112F-1 for RG58U



N MALE, Screw-on type
N-112S for 9913 cable

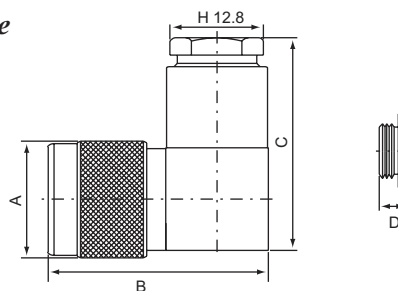


N MALE, Crimp type, right angle
N-121



PART NO.	Ω	CABLE TYPE	A	B	C	D	E
N-121A	50,75	RG6U	20	38.1	26.5	12.7	4.7
N-121C	50,75	RG214U	20	38.1	30.5	13.5	4.7
N-121F	50,75	RG58U	20	38.1	26.5	12.7	4.7
N-121G	50,75	RG59U	20	38.1	26.5	12.7	4.7
N-121P	50,75	RG55U(223U)	20	38.1	26.5	12.7	4.7

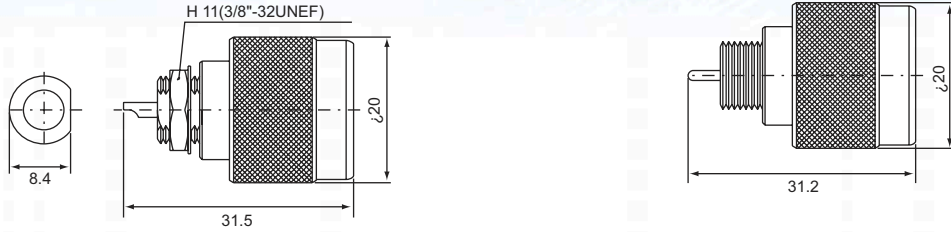
N MALE, Screw-on type, right angle
N-122



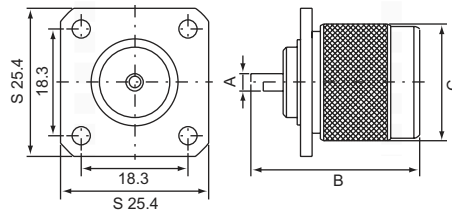
PART NO.	Ω	CABLE TYPE	A	B	C	D
N-122B	50,75	RG213U	20	37.7	36.8	4.7
N-122F	50,75	RG58U	20	37.7	36.4	4.7
N-122-H500	50,75	H500	20	37.5	36.9	4.7

**N MALE, Solder type
Bulkhead receptacle
N-135**

N-135-1



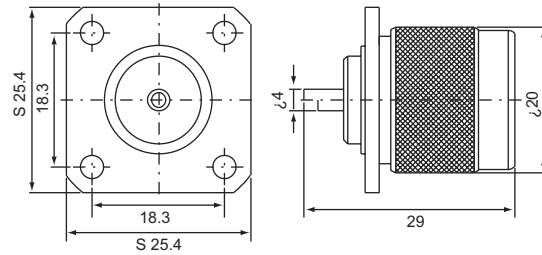
**N MALE, Solder typ
panel receptacle
N-145B**



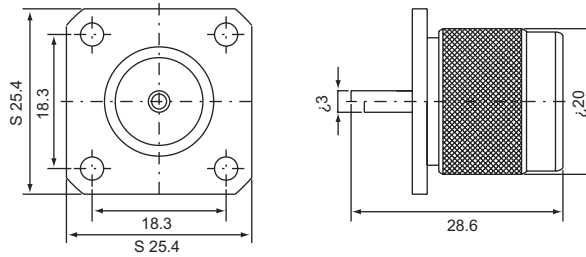
PART NO.	Ω	CABLE TYPE	A	B	C
N-145B	50,75	RG213U	4	29	20

**N MALE, Solder type
Panel receptacle
N-145T-SS**

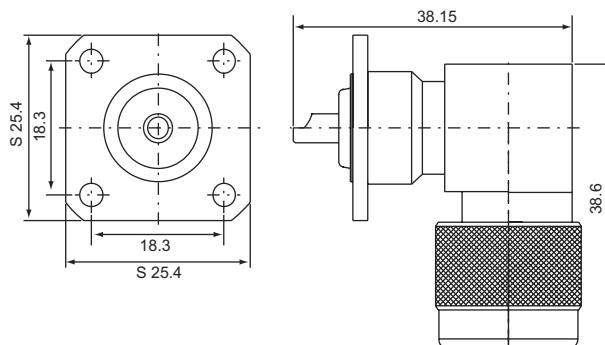
Body=SILVER
Center pin=SILVER
Dielectric=TEFLON



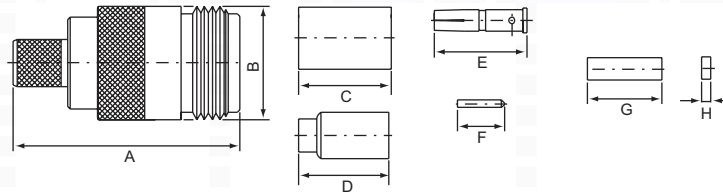
**N MALE, Solder type
Panel receptacle
N-1450**



**N MALE, Solder type
Right angle panel receptacle
N-165**

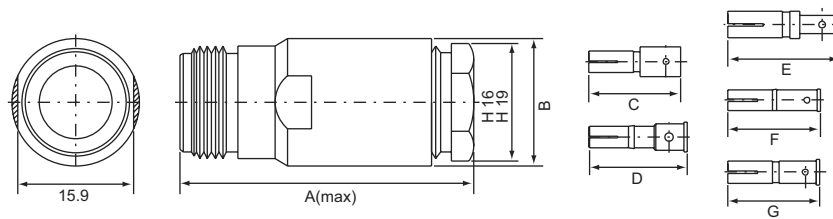


N FEMALE, Crimp type
N-211



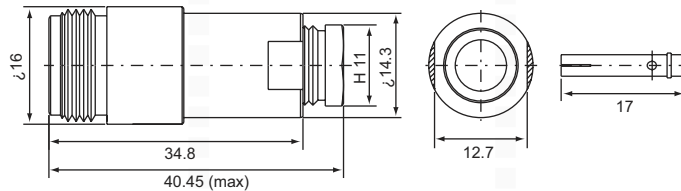
PART NO.	Ω	CABLE TYPE	A	B	C	D	E	F	G	H	
N-211/5D-1	50,75	5D-2V	31	16	12.7	/	12.6	/	/	/	
N-211-8D-FB		8D-FB	32.5	16	13.5	/	12.6	/	/	/	
N-211A		RG6U	28	16	12.7	/	12.6	/	/	/	
N-211B		RG213U	32.5	16	13.5	/	12.6	/	/	/	/
N-211C		RG214U									
N-211F		RG58U	28	16	12.7	/	12.6	/	/	/	/
N-211G		RG59U									
N-211/H155		H155	32.5	16	12.7	/	12.7	/	/	/	
N-211L		RG174U(316U)	28	16	/	12.4	12.6	/	/	/	/
N-211L-1			31	16	9.5	/	/	6.5	/	/	/
N-211L-2			28	16	/	12.4	12.6	/	10.1	1.2	/
N-211P		RG223U(55U)	28	16	12.7	/	12.6	/	/	/	/
N-211/RLF5		RLF5	28	16	12.7	/	12.6	/	/	/	/
N-211/RLF7		RLF7	28	16	2.7	/	12.6	/	/	/	/

N FEMALE, Screw-on type
N-212

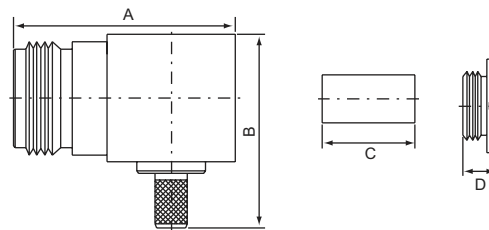


PART NO.	Ω	CABLE TYPE	A	B	C	D	E	F	G	
N-212-8D	50,75	8D-FB	40.2	17.5	12.6	/	/	/	/	
N-212B	50,75	RG213U			/	12.6	/	/	/	/
N-212C	50,75	RG214U			/	/	/	12.6	/	/
N-212F	50,75	RG58U			/	/	/	12.6	/	/
N-212G	50,75	RG59U			/	/	/	12.6	/	/
N-212/H155	50,75	H155	40.2	17.5	/	/	12.6	/	/	
N-212-H500	50,75	H500	40.3	17.5	/	13.5	/	/	/	
N-212/RLF5	50,75	RLF5	39.6	17.5	/	12.6	/	/	/	
N-212/RLF7	50,75	RLF7	39.7	17.5	/	/	/	/	12.6	
N-212S	50,75	9913	40.1	19	/	13.5	/	/	/	

N FEMALE, Screw-on type
N-212F-1 for RG58U

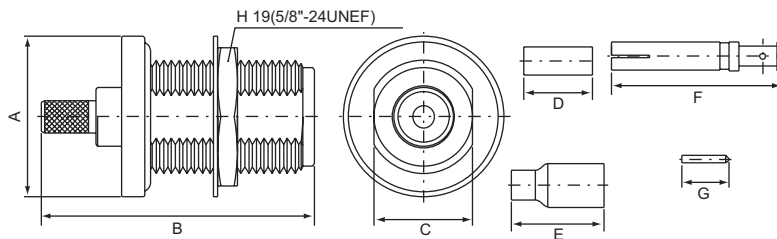


N FEMALE, Crimp type
Right angle
N-221



PART NO.	Ω	CABLE TYPE	A	B	C	D
N-221A	50,75	RG6U	30.3	26.5	12.7	4.7
N-211F	50,75	RG58U				
N-211G	50,75	RG59U				

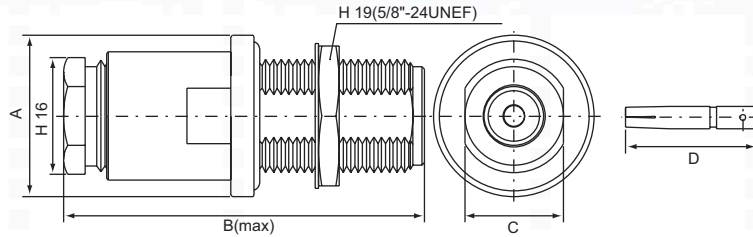
N FEMALE, Crimp type
Bulkhead receptacle
N-231



PART NO.	Ω	CABLE TYPE	A	B	C	D	E	F	G
N-231F-1B	50,75	RG58U	22	36	13.5	12.7	/	18.2	/
N-231-085-WP	50,75	RG405U	22	32.3	13.5	/	/	/	6.5
N-231-141-WP	50,75	RG402U	22	32.3	13.5	/	/	18.2	/
N-231F-WP	50,75	RG58U	22	37.5	13.5	12.7	/	18	/
N-231L-WP	50,75	RG174U(316U)	22	37.5	13.5	/	12.7	18	/
N-231L-2-WP	50,75	RG174U(316U)	22	37.5	13.5	9.5	/	/	6.5

N FEMALE, Screw-on type
Bulkhead receptacle

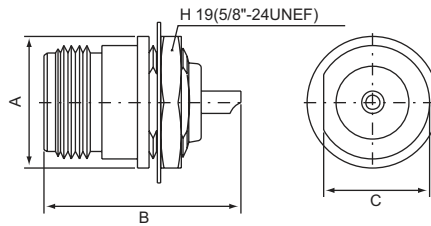
N-232



PART NO.	Ω	CABLE TYPE	A	B	C	D
N-232B-WP	50,75	RG213U	22	48.9	13.5	18
N-232F-WP	50,75	RG58U	22	40.6	13.5	18.2

N FEMALE, Solder type
Bulkhead receptacle

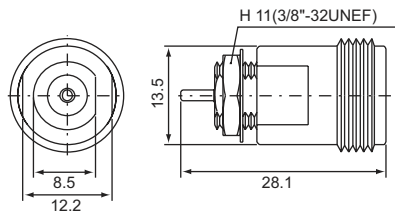
N-235



PART NO.	Ω	CABLE TYPE	A	B	C
N-235	50,75	WELDING SPOT	18	27	
N-235-4B	50,75	WELDING SPOT	19	74.6	
N-235-5B	50,75	WELDING SPOT	19	110.6	
N-235-6B	50,75	WELDING SPOT	19	36.2	
N-235-D	50,75	WELDING SPOT	18	27	14.5

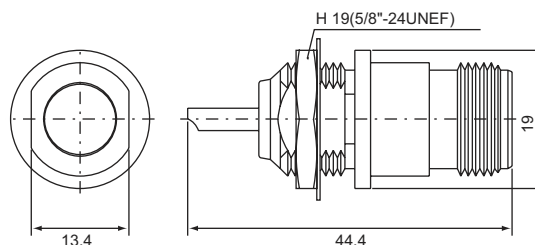
N FEMALE, Solder type
Bulkhead receptacle

N-2350

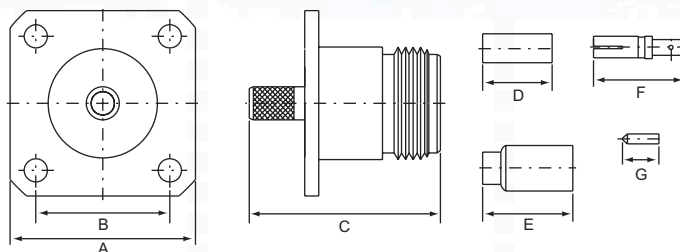


N FEMALE
Bulkhead receptacle

N-2351

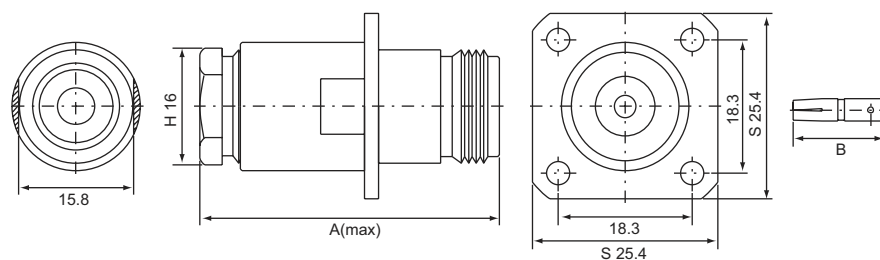


N FEMALE, Crimp type
Panel receptacle
N-241



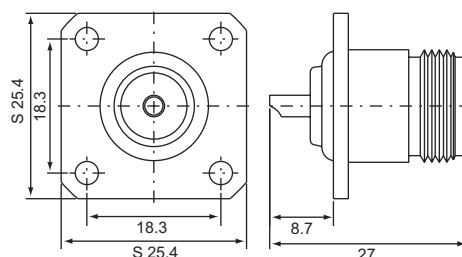
PART NO.	Ω	CABLE TYPE	A	B	C	D	E	F	G
N-241A	50,75	RG6U	25.4	18.3	26.2	12.7	/	12.6	/
N-241B	50,75	RG213U	25.4	18.3	31.7	13.5	/	12.7	/
N-241C	50,75	RG214U	25.4	18.3	31.7	13.5	/	12.6	/
N-241C-1	50,75		/	/	/	/	/	/	
N-241F	50,75	RG58U	25.4	18.3	26.2	12.7	/	12.6	/
N-241G	50,75	RG59U					/	/	/
N-241L-SWP	50,75	RG174U(316U)	17.5	12.7	28.3	9.5	/	/	3.5
N-241L-1	50,75	RG174U(316U)	25.4	18.3	26.2	/	12.4	12.6	/
N-241P	50,75	RG223U	25.4	18.3	26.2	12.7	/	12.6	/

N FEMALE, Screw-on type
Panel receptacle
N-242



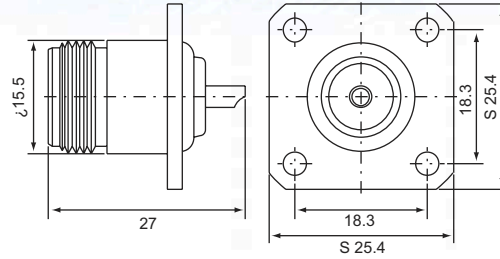
PART NO.	Ω	CABLE TYPE	A	B
N-242A	50,75	RG6U	32.8	12.6
N-242B	50,75	RG213U	41	12.6
N-242F	50,75	RG58U	32.8	12.6
N-242G	50,75	RG59U	32.8	12.6

N FEMALE, Solder type
Panel receptacle
N-245B

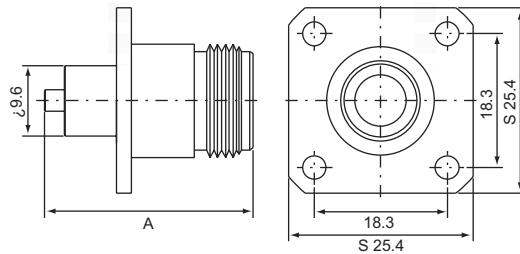


N FEMALE, Solder type
Panel receptacle
N-245T-SS

Body=SILVER
 Center pin=SILVER
 Dielectric=TEFLON

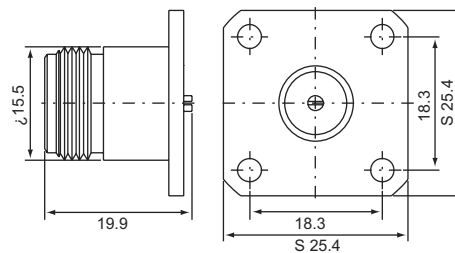


N FEMALE
Panel receptacle
N-2450

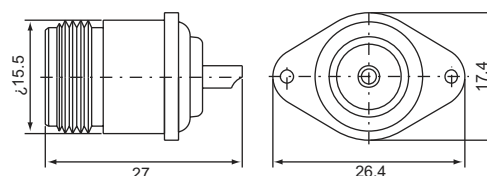


PART NO.	Ω	CABLE TYPE	A
N-2450	50,75	WELDING SPOT	28.6
N-2450-1	50,75		37.2

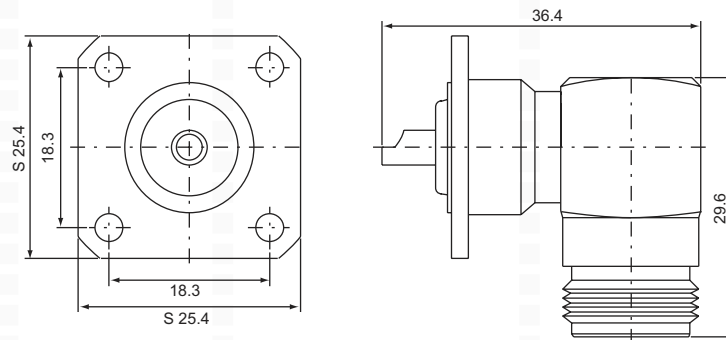
N FEMALE, Solder type
Square flange panel receptacle
N-2451



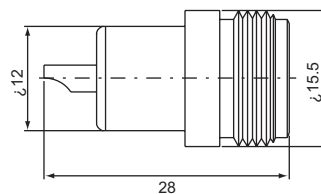
N FEMALE, Solder type
Diamond flange panel receptacle
N-2452



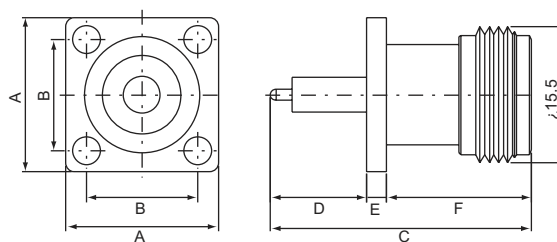
N FEMALE, Solder type
Right angle panel receptacle
N-265



N FEMALE, Bulkhead receptacle
N-B235-1 Solder type

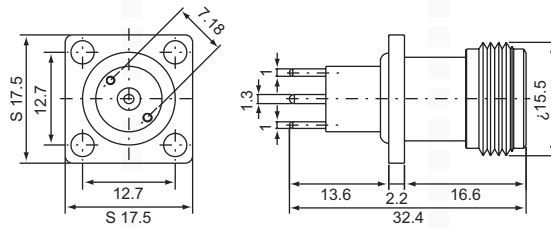


N FEMALE
Panel receptacle, Solder type
Pressurized with O-ring seal
N-P245

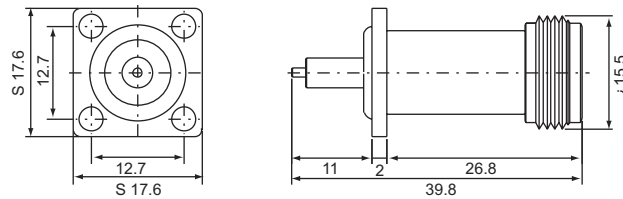


PART NO.	Ω	A	B	C	D	E	F
N-245-SWP	50,75	17.5	12.7	29.8	11	2.2	16.6
N-245-3C-SWP	50,75	17.5	12.7	38.8	20	2.2	16.6
N-245-4C	50,75	25.4	18.2	36.8	18	2.2	16.6
N-245-5C-SWP	50,75	25.4	18.2	36.7	17.9	2	16.8
N-245-6C-SWP	50,75	17.5	12.7	30.8	12	2.2	16.6
N-245-8C-SWP	50,75	17.5	12.7	29.5	10.7	2.2	16.6
N-245-9C-SWP	50,75	17.5	12.7	40	21.2	2.2	16.6
N-245-10C-SWP	50,75	17.5	12.7	24.9	6.1	2.2	16.6
N-245-11C-SWP	50,75	17.5	12.7	33.8	15	2.2	16.6
N-245-12C-SWP	50,75	17.5	12.7	29.8	11	2.2	16.6

N FEMALE
Panel receptacle, Solder type
Pressurized with O-ring seal
N-P245-7C-SWP



N FEMALE
Panel receptacle, Solder type
Pressurized with O-ring seal
N-P245-13C-SWP



N FEMALE, Solder type
N-F215 D/D 75ohm

