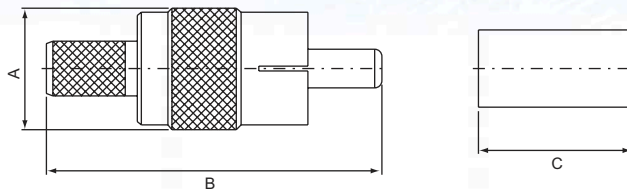


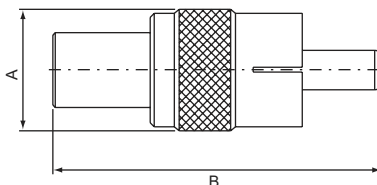
# RCA SERIES CONNECTORS ADAPTORS

## RCA MALE, Crimp type R-111



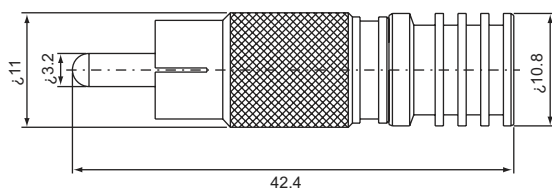
PART NO.	$\Omega$	CABLE TYPE	A	B	C
R-111A	50	RG6U	10	27.6	12.7
R-111F		RG58U			
R-111G		RG59U			
R-111L	50	RG174U(316U)	10	23	9.5

## RCA MALE, Attached right type R-114

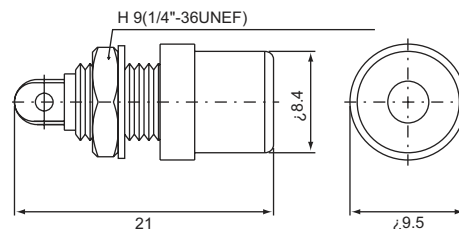


PART NO.	$\Omega$	CABLE TYPE	A	B
R-114A	50	RG6U	10	20.5
R-114F		RG58U		
R-114G		RG59U		
R-114L		RG174U(316U)		

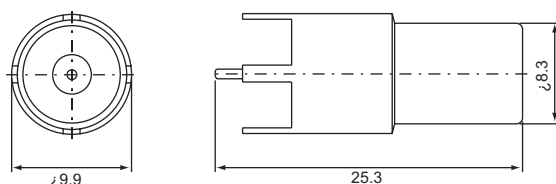
## RCA MALE, Attached right type R-114BA/0.36-1 for RG6U



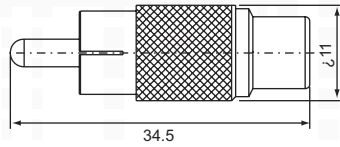
## RCA FEMALE, Solder type Bulkhead receptacle R-235



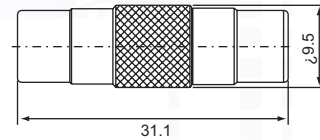
## RCA FEMALE, P.C.B mount Straight type R-P215/4



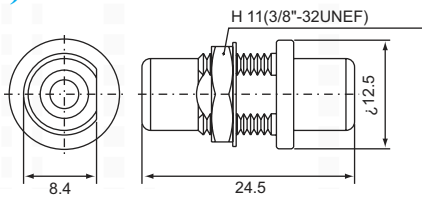
**RCA male-RCA female**  
**R-312 (50Ω)**



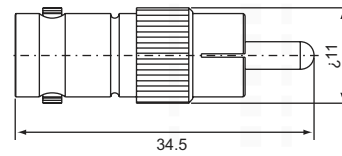
**double RCA female**  
**R-322 (50Ω)**



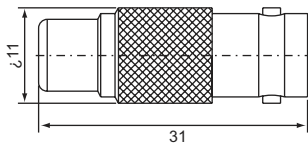
**double RCA female**  
**bulkhead receptacle**  
**R-332 (50Ω)**



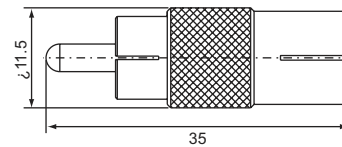
**RCA male-BNC female**  
**RB-312 (50Ω)**



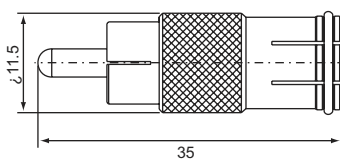
**RCA female, bulkhead**  
**(50Ω) receptacle**  
**RB-322**



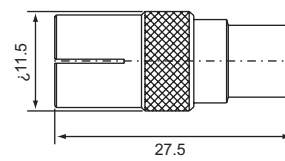
**RCA male-9.5 EUROPEAN female**  
**RE-312 (50Ω)**



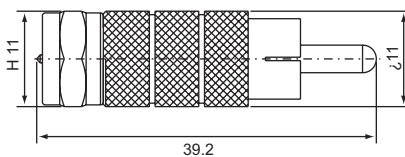
**RCA male-EUROPEAN female**  
**RE-3120 (50Ω)**



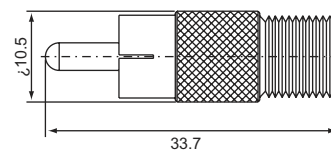
**RCA female-EUROPEAN female**  
**RE-322 (50Ω)**



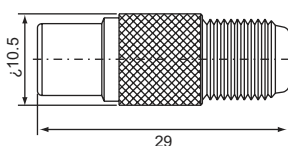
**RCA male-F male**  
**RF-311 (50Ω)**



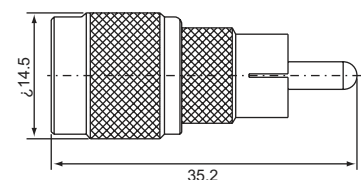
**RCA male-F female**  
**RF-312 (50Ω)**



**RCA female-F female**  
**RF-322 (50Ω)**



**RCA male-TNC male**  
**RT-311 (50Ω)**



*RCA male-TNC female*  
*RT-312 (50Ω)*

