

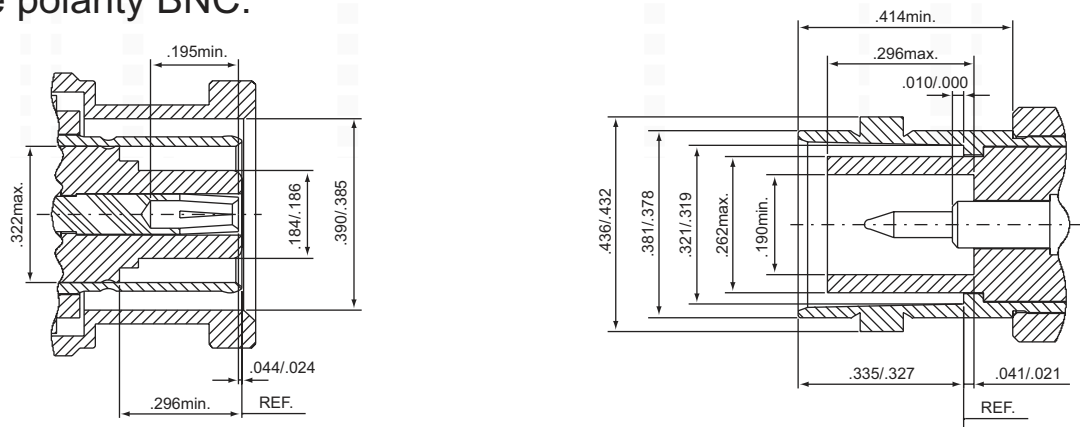
REVERSE POLARITY COAXIAL

(MMCX, MCX, N SMA, SMB, BNC, TNC)

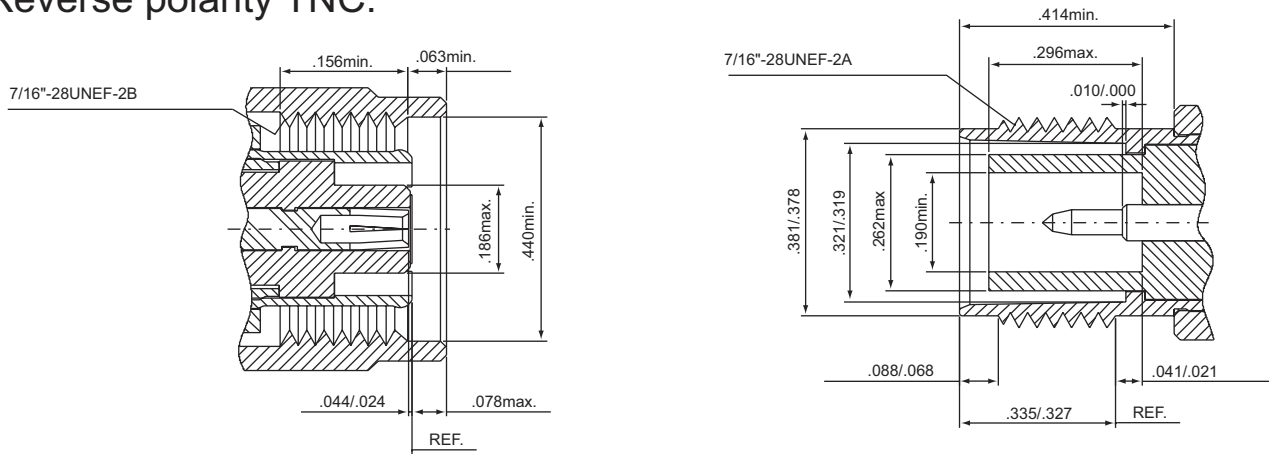
Reverse Polarity non-standard interface connectors are design prevents damage and will not mate with standard interface devices if accidentally connected, they're designed for spread spectrum wireless applications which part 15.203 of U.S FCC regulations are applicable, Standard cable affixement size are available with special or custom design accepted. MMCX,MCX,N,SMA,SMB,BNC and TNC are readily available.

Interface Dimensions:

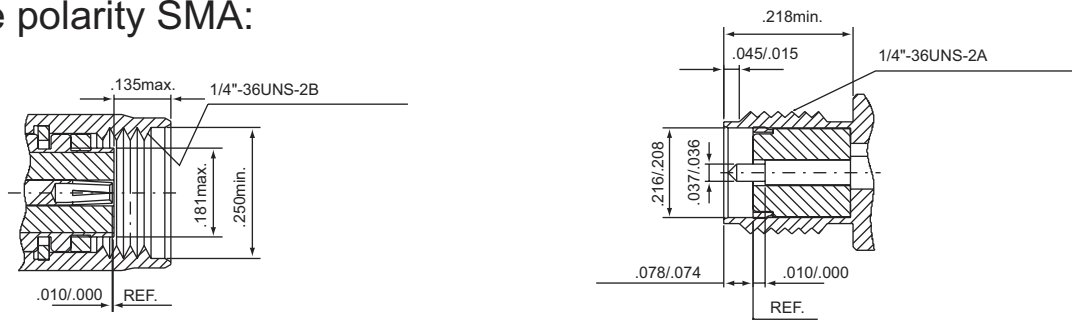
Reverse polarity BNC:



Reverse polarity TNC:



Reverse polarity SMA:



Ps.unit=inch

REVERSE POLARITY SMA

Electrical:

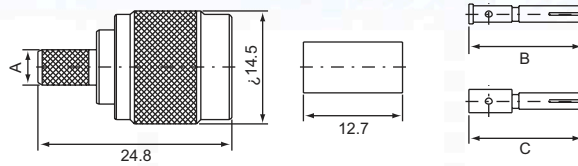
Impedance	50 ohm
Frequency Range	0 to 1.8 GHz (for RG-402 semi-rigid cable) RG-405 . for flexible cable→max operation frequency of cable per MIL-C-17(12.4 max GHz)
VSWR	RG-178U→ 1.2+0.025 f max GHz(Straight) 1.2+0.03 f max GHz(Right angle)
	RG-316U→ 1.15+0.02 f max GHz(Straight) 1.15+0.03 f max GHz(Right angle)
	RG-142U→ 1.15+0.01 f max GHz(Straight) 1.15+0.02 f max GHz(Right angle)
	RG-402U→ 1.05+0.01 f max GHz(Straight) 1.1+0.01 f max GHz(Right angle)
	RG-405U→ 1.07+0.01 f max GHz(Straight) 1.1+0.01 f max GHz(Right angle)
Insertion Loss	0.06dB maximun × √ fGHz @ 6GHz

REVERSE POLARITY BNC, TNC

Electrical:

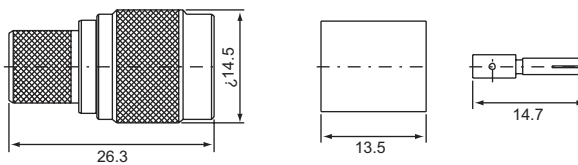
Impedance	BNC: 50 ohm	TNC: 75ohm
Frequency Range	BNC: 0-4.0 GHz	TNC: 0-11GHz
VSWR	1.3max(Straight) ; 1.35max(Right angle)	
Insertion Loss	0.2dB max @ 3GHz	

REVERSE TNC MALE, Crimp type
T-A111



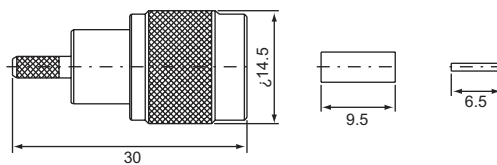
PART NO.	Ω	CABLE TYPE	A	B	C
T-A111A	50,75	RG6U	6.5	14.7	
T-A111F		RG58U	4.5	14.7	
T-A111G		RG59U	5.5	14.7	
T-A111/RLF5		RLF5	5.5		14.7
T-A111/RLF7		RLF7	6.6		14.7
T-A111-H155		H155	5.5		14.7
T-A111-H155-1		H155	5.5		14.7

REVERSE TNC MALE, Crimp type
T-A111

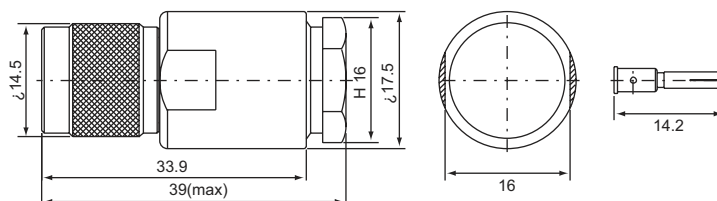


PART NO.	Ω	CABLE TYPE
T-A111B	50,75	RG8U(213U)
T-A111C		RG9U(214U)

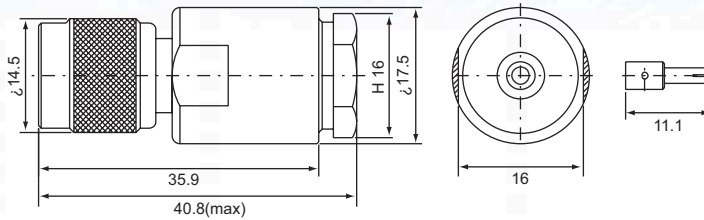
REVERSE TNC MALE, Crimp type
T-A111L-01 for RG174U(316U)



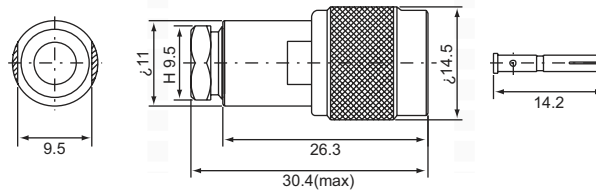
REVERSE TNC MALE, Screw-on type
T-A112B for RG8U(213U)



**REVERSE TNC MALE,
Screw-on type
T-A112C for
RG9U(214U)**

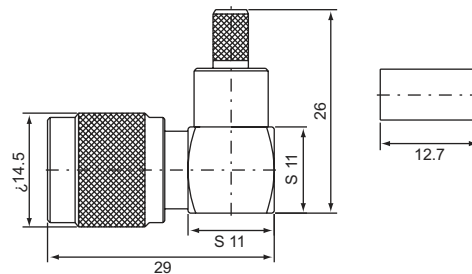


**REVERSE TNC MALE,
Screw-on type
T-A112**



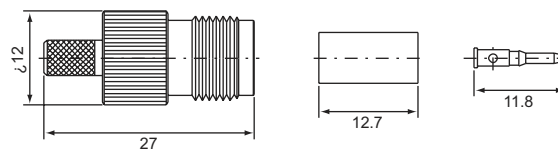
PART NO.	Ω	CABLE TYPE
T-A112A	50,75	RG6U
T-A112F		RG58U
T-A112G		RG59U

**REVERSE TNC MALE,
Crimp type
T-A121 right angle**



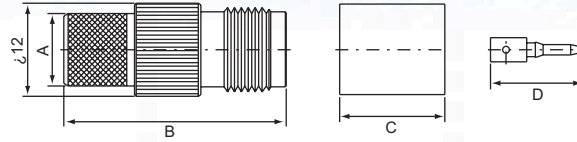
PART NO.	Ω	CABLE TYPE
T-A121A	50	RG6U
T-A121F		RG58U
T-A121G		RG59U

**REVERSE TNC FEMALE,
Crimp type
T-A211**



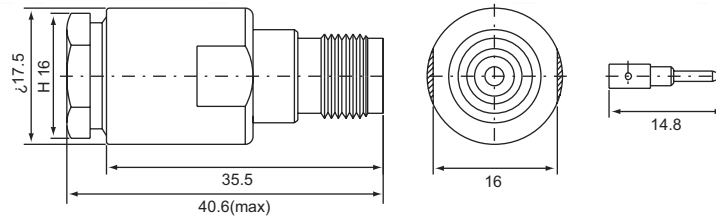
PART NO.	Ω	CABLE TYPE
T-A211B	50	RG6U
T-A211F		RG58U
T-A211G		RG59U

REVERSE TNC FEMALE, Crimp type
T-A211

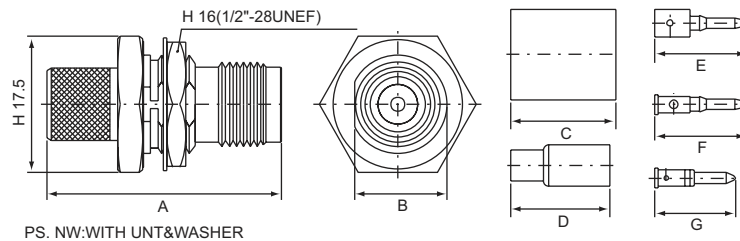


PART NO.	Ω	CABLE TYPE
T-A211B	50	RG8U(213U)
T-A211/RLF5		RLF5

REVERSE TNC FEMALE, Screw-on type
T-A212B for RG8U(231U)

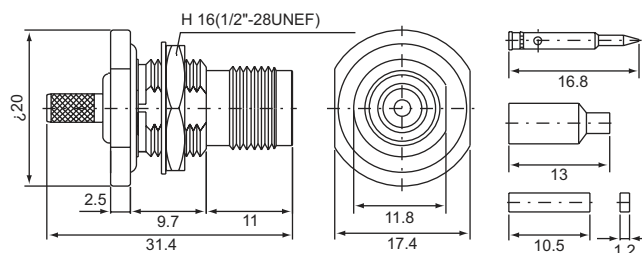


REVERSE TNC FEMALE, Crimp type
T-A231-HWP Bulkhead receptacle

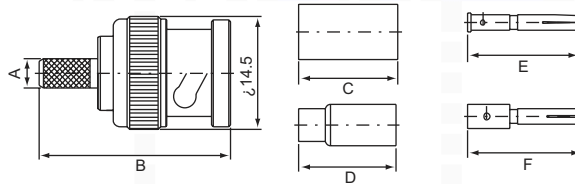


PART NO.	Ω	CABLE TYPE	A	B	C	D	E	F	G
T-A231C-HWP-NW		RG214U	30	11.8	13.5	/	11.8	/	/
T-A231F-HWP-NW	50	RG58U	29.2	11.8	12.7	/	/	11.8	/
T-A231L-HWP		RG174U(316U)	29.5	/	/	12.7	/	/	10.45

REVERSE TNC FEMALE, Crimp type
Bulkhead receptacle
T-A231M-1B-WP-NW
for RG178U

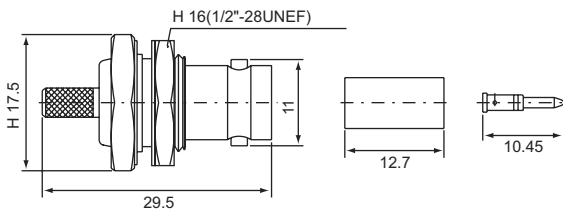


REVERSE BNC MALE, Crimp type
B-A111

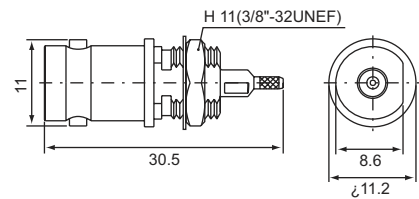


PART NO.	Ω	CABLE TYPE	A	B	C	D	E	F
B-A111F	50	RG58U	3.7	24.5	/	12.4	14.2	/
B-A111L		RG174U(316U)	4.5	24.5	12.7	/	14.2	/
B-A111/RLF5		RLF5	5.5	24.5	12.7	/	/	14.7

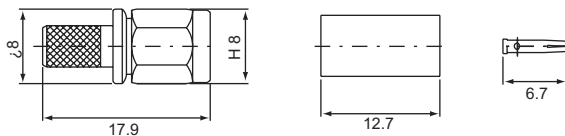
REVERSE BNC FEMALE, Crimp type
Bulkhead receptacle
B-A231F-HWP-NW for RG58U



REVERSE BNC FEMALE, Solder type
Bulkhead receptacle
B-A2351L for RG174U(316U)

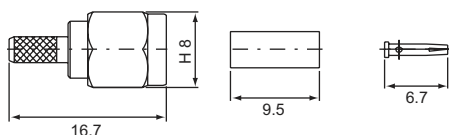


REVERSE SMA MALE, Crimp type
S-A111

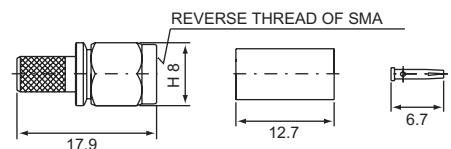


PART NO.	Ω	CABLE TYPE
S-A111F	50	RG58U
S-A111G		RG59U

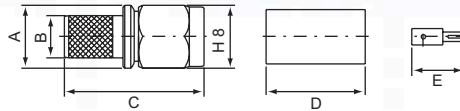
REVERSE SMA MALE, Crimp type
S-A111L for RG174U(316U)



REVERSE SMA MALE, Crimp type
S-A111F-TR for RG58U

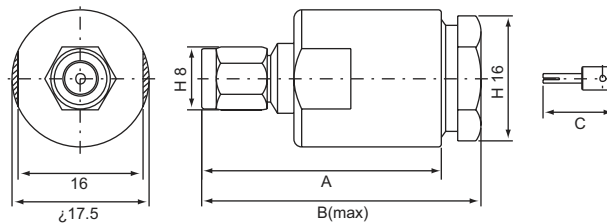


REVERSE SMA MALE, Crimp type
S-A111



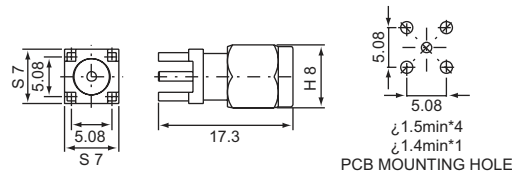
PART NO.	Ω	CABLE TYPE	A	B	C	D	E
S-A111/RLF5	50	RLF5	8	5.5	17.9	12.7	6.7
S-A111/RLF7		RLF7	9	6.6	17.9	12.7	6.7
S-A111-H155		H155	8	5.5	17.9	12.7	6.7
S-A111-H155-1		H155	8	5.5	18.6	12.7	7.85

REVERSE SMA MALE, Screw-on type
S-A112

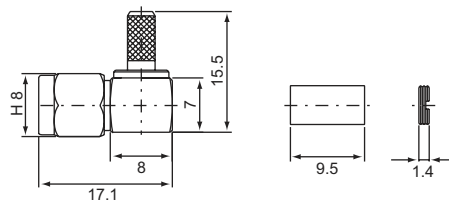


PART NO.	Ω	CABLE TYPE	A	B	C
S-A112B		RG8U(231U)	30.7	35.8	9.1
S-A112-5D		5D-2V	30.7	34.9	6.7

REVERSE SMA MALE, Solder type
S-PA115 PCB mount

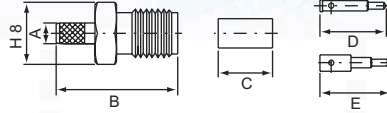


REVERSE SMA MALE, Crimp typ
S-A121 right angle



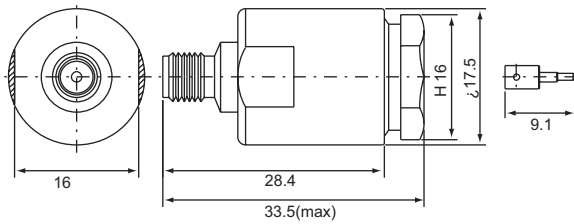
PART NO.	Ω	CABLE TYPE
S-A121F	50	RG58U
S-A121G		RG59U
S-A121L		RG174U(316U)
S-A121P		RG55U(223U)

REVERSE SMA FEMALE, Crimp type
S-A211

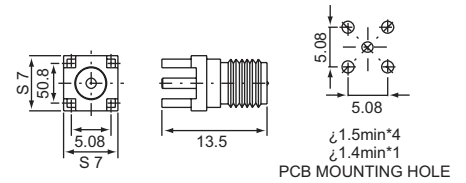


PART NO.	Ω	CABLE TYPE	A	B	C	D	E
S-A221F	50	RG58U	3.2	18	12.7	9.1	/
S-A221L		RG174U(316U)	2.7	15.6	7	8.6	
S-A221/RLF5		RLF5	5.5	18	12.7	9.1	
S-A221-H155		H155	5.5	18	12.7	9.1	

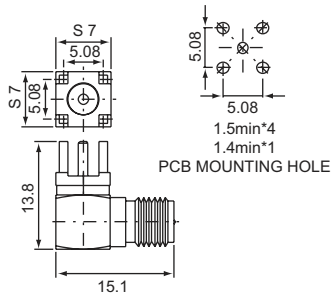
REVERSE SMA FEMALE, Screw-on type
S-A212B for RG8U(213U)



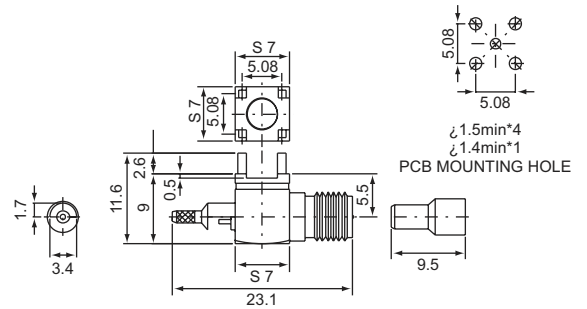
REVERSE SMA FEMALE, Solder type
S-PA215 PCB mount



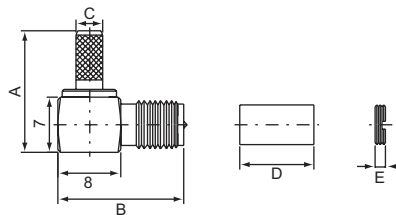
REVERSE SMA FEMALE, Solder type
Right angle, PCB mount
S-PA225



REVERSE SMA FEMALE, Solder type
T type, PCB mount
S-AP2251L

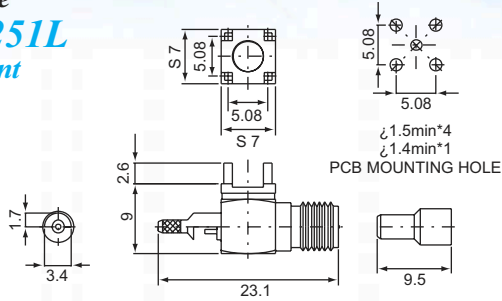


REVERSE SMA FEMALE, Crimp type
S-A221 right angle

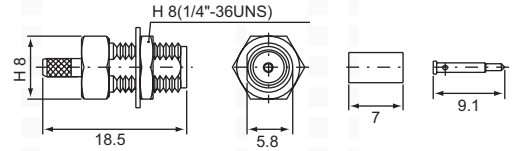


PART NO.	Ω	CABLE TYPE	A	B	C	D	E
S-A221F	50	RG58U	15.5	16.1	4.5	12.7	1.4
S-A221G		RG59U	15.5	16.1	5.5	12.7	1.4
S-A221L		RG174U(31U)	14.5	16.1	2.7	9.5	1.4
S-A221P		RG55U(223U)	15.5	16.1	4.5	12.7	1.4

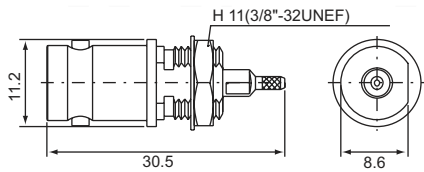
**REVERSE SMA FEMALE,
Crimp type
S-AP2251L
PCB mount**



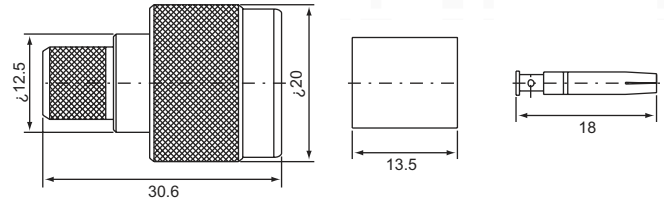
**REVERSE SMA FEMALE, Crimp type
Bulkhead receptacle
S-A231L-2A for RG174U(316U)**



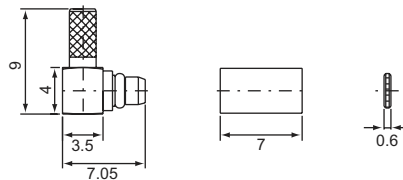
**REVERSE BNC FEMALE,
Crimp type Bulkhead receptacle
B-A2351L for
RG174U(316U)**



**REVERSE N MALE, Crimp type
N-A111B for RG8U(231U)**

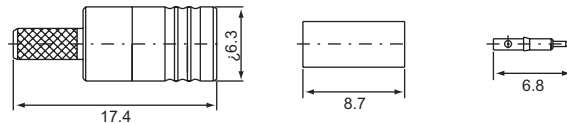


**REVERSE MMCX MALE, Crimp type
13-A121 right angle**

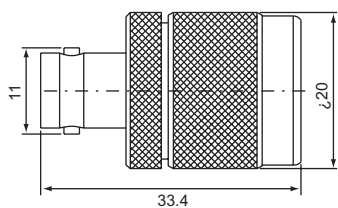


PART NO.	Ω	CABLE TYPE
13-A121L	50	RG174U(316U)
13-A121M		RG178U

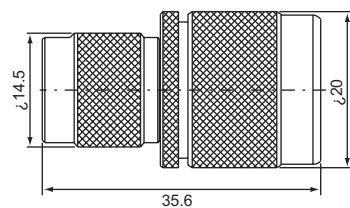
**REVERSE SMB MALE,
Crimp type
S1-A111L for
RG174U(316U)**



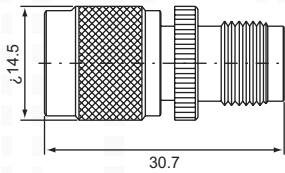
**N male-REVESE BNC male
NB-A312 (50 Ω)**



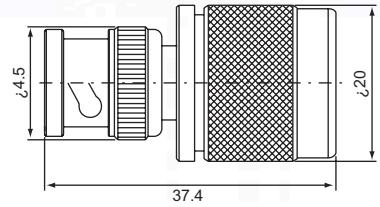
**N male-REVESE TNC male
NT-A311-1 (50 Ω)**



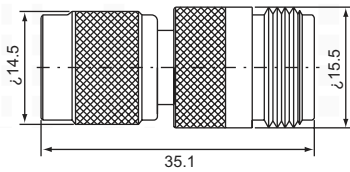
REVERSE TNC male-REVERSE TNC female
T-A312 (50Ω)



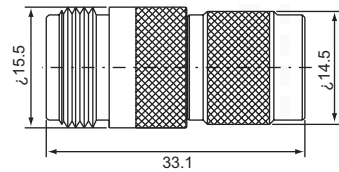
TNC male-Reverse BNC male
TB-A311 (50Ω)



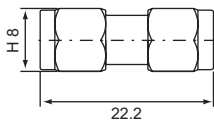
REVERSE TNC male-N female
TN-A312 (50Ω)



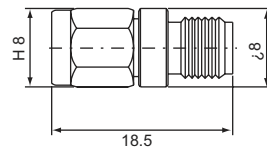
TNC male-REVERSE N female
TN-A312-1 (50Ω)



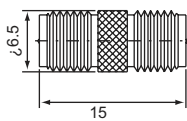
double REVERSE SMA male
S-A311 (50Ω)



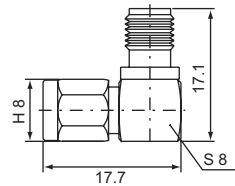
REVERSE SMA male-female
S-A312 (50Ω)



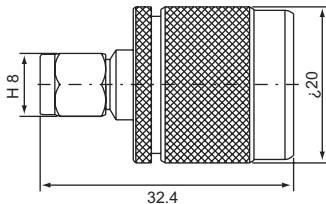
double REVERSE SMA female
S-A322 (50Ω)



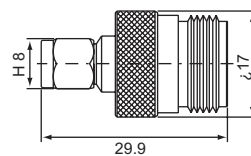
REVERSE SMA male-female, right angle
S-A412 (50Ω)



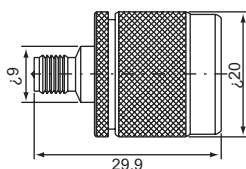
REVERSE SMA male-N male
SN-A311 (50Ω)



REVERSE SMA male-N female
SN-A312 (50Ω)



REVERSE SMA female-N male
SN-A321 (50Ω)



SMA female-REVERSE TNC male
ST-A321-1 (50Ω)

