

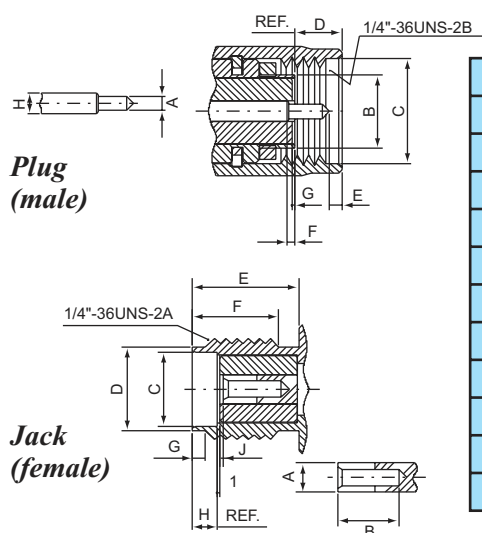
SMA SERIES CONNECTORS

50 ohm 0-18GHz

SMA series connectors are semi-precision, subminiature, high frequency connectors which offer reliable broadband performance DC to 18GHz with low reflection and constant 50 ohm impedance.

The main features are high mechanical strength, high durability and low VSWR. Developed design principles, careful manufacturing at all stages and a thorough quality assurance organization are the basis for the well know quality have made the SMA are widely in the microwave community. Among typical applications are components, such as dividers, mixers, amplifiers, trimmers and attenuators. SMA connectors are also used to provide interconnections from printed circuit board striplines to coaxial cable.

Interface Dimensions:

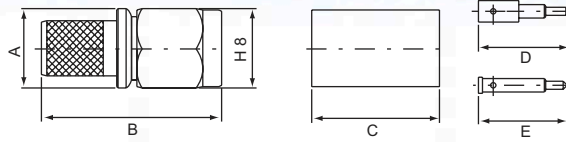


	Plug		Jack	
	min.	max.	min.	max.
A	0.90/.036	0.94/.037	1.24/.049	1.29/.051
B	-	4.59/.181	2.67/.105	-
C	6.35/.250	-	5.28/.208	5.49/.216
D	-	3.34/.135	4.59/.181	4.67/.184
E	0.38/.015	1.14/.045	5.54/.218	-
F	0.00/.000	0.25/.010	4.32/.170	-
G	0.00/.000	0.18/.007	0.38/.015	1.14/.045
H	1.24/.049	1.29/.051	1.88/.074	1.98/.078
I	-	-	0.00/.000	0.25/.010
J	-	-	0.00/.000	0.18/.007

Electrical:

Impedance	50 ohm
Frequency Range	0 to 18.0 GHz *RG-402 & RG-405 semi-rigid cable-0 to 18.0GHz *flexible cable→max operation frequency of cable per MIL-C-17(12.4GHz max)
VSWR	RG178U→1.2+0.025 f max GHz(Straight) →1.2+0.03 f max GHz(Right angle)
	RG316U→1.15+0.02 f max GHz(Straight) →1.15+0.03 f max GHz(Right angle)
	RG412U→1.15+0.01 f max GHz(Straight) →1.15+0.02 f max GHz(Right angle)
	RG402U→1.05+0.01 f max GHz(Straight) →1.1+0.01 f max GHz(Right angle)
	RG405U→1.07+0.01 f max GHz(Straight) →1.1+0.01 f max GHz(Right angle)
Insertion Loss	0.06dB maximum \sqrt{f} GHz @ 6GHz

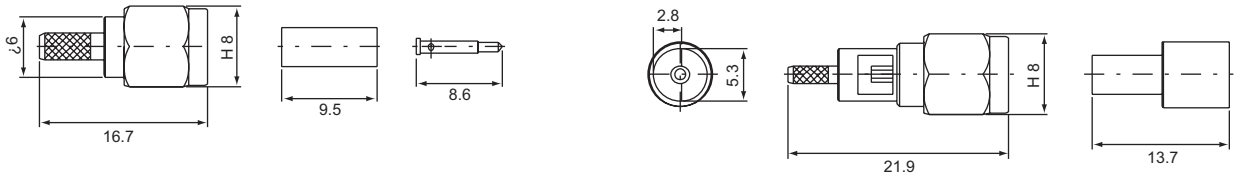
SMA MALE, Crimp type
S-111



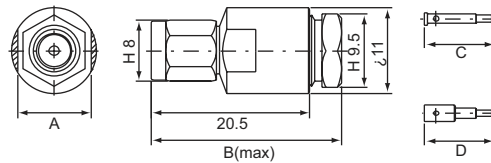
PART NO.	Ω	CABLE TYPE	A	B	C	D	E
S-111F	50	RG58U	8	17.9	12.7	9.1	
S-111G		RG59U					
S-111-H155	50	H155	8	17.9	12.7	9.1	
S-111-HF50	50	HF50	6	16.7	10		9.1
S-111-LMR200	50	LMR200	7	20.1	12.7	8.5	
S-111-RLF5	50	RLF5	8	17.9	12.7	9.1	
S-111-RLF7	50	RLF7	9	17.9	12.7	9.1	

SMA MALE, Crimp type
S-111L for RG174U(316U)

SMA MALE, Crimp type
S-111M for RG178U

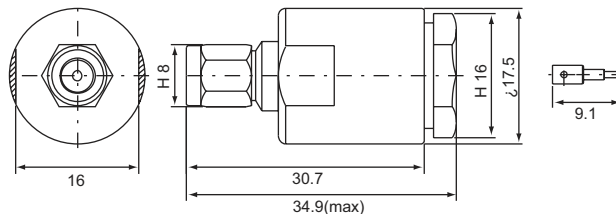


SMA MALE, Screw-on type
S-112

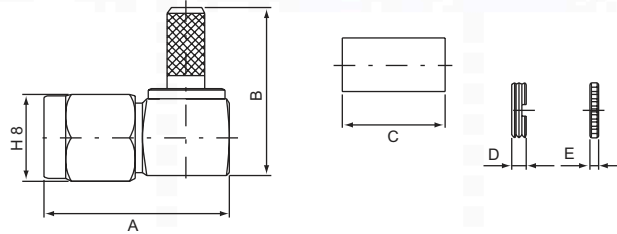


PART NO.	Ω	CABLE TYPE	A	B	C	D
S-112F	50	RG58U	9.5	24.6	9.1	
S-112G		RG59U				
S-112/RLF5	50	RLF5	9.5	24.6		9.1
S-112X	50	RG	9.5	24.6		9.1

SMA MALE, Screw-on type
S-112-5D

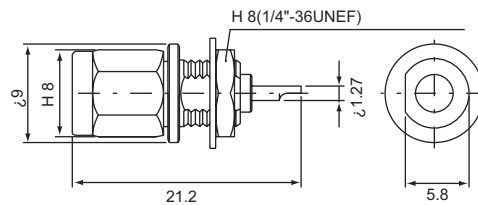


SMA MALE, Crimp type right angle
S-121

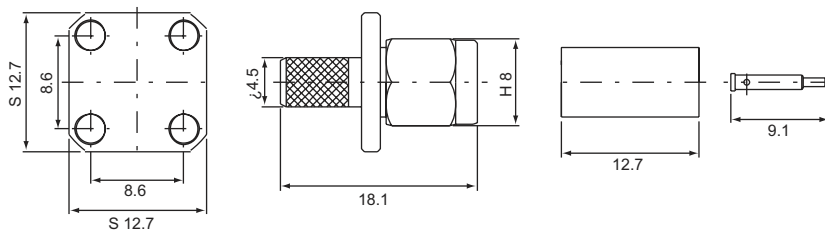


PART NO.	Ω	CABLE TYPE	A	B	C	D	E
S-121F	50	RG58U	17.1	15.5	12.7	1.4	
S-121G		RG59U					
S-121L	50	RG174U	17.1	14.5	9.5	1.4	
S-121F-1	50	RG58U	17.1	15.5	12.7		0.8
S-121G-1		RG59U					
S-121L-1	50	RG174U	17.1	14.5	9.5		0.8
S-121-HF50	50	HF50	17.1	15.5	10	1.4	
S-121P	50	RG55U(142U)	17.1	15.5	12.7	1.4	

SMA MALE, Solder type bulkhead receptacle
S-135

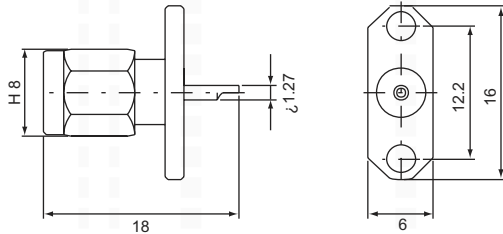


SMA MALE, Crimp type
Panel receptacle square flange
S-1414

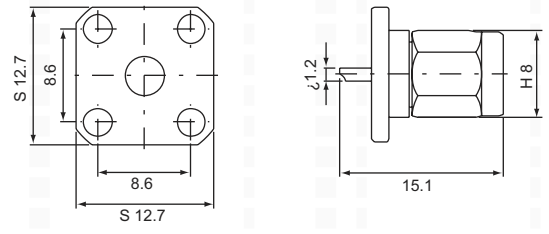


PART NO.	Ω	CABLE TYPE
S-1414F	50	RG58U
S-1414G		RG59U
S-1414L		RG174U(316U)
S-1414M		RG178U
S-1414N		RG179U

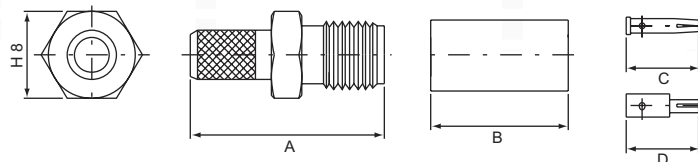
SMA MALE, Solder type
Panel receptacle narrow flange
S-1452



SMA MALE, Solder type
Panel receptacle square flange
S-1454

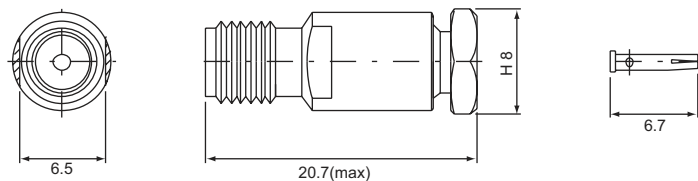


SMA FEMALE, Crimp type
S-211

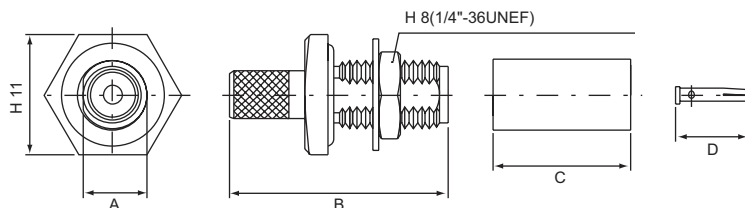


PART NO.	Ω	CABLE TYPE	A	B	C	D
S-211F	50	RG58U	18	12.7	6.7	
S-211G		RG59U				
S-211-H155	50	H155	18	12.7		6.7
S-211	50	RG174U(316U)	15.6	7	6.2	
S-211/RLF5	50	RLF5	18	12.7		6.7

SMA FEMALE, Screw-on type
S-212L for RG174U(316U)

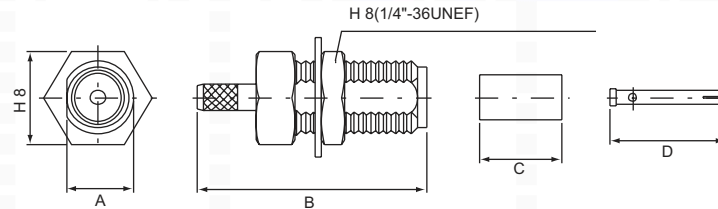


SMA FEMALE, Crimp type
Bulkhead receptacle
S-231



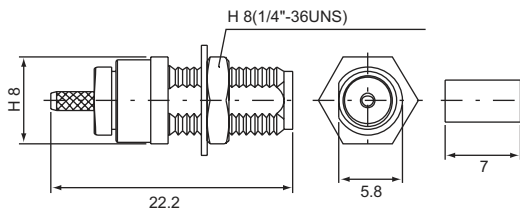
PART NO.	Ω	CABLE TYPE	A	B	C	D
S-231F	50	RG58U	5.9	20.2	12.7	6.7
S-231-HO-085-HWP	50	SEMI-RIGID.085	5.9	19		6.7
S-231-HO-141-HWP		SEMI-RIGID.141				
S-231L	50	RG174U(316U)	5.9	18.7	7	6.7

**SMA FEMALE, Crimp type
Bulkhead receptacle
S-231**

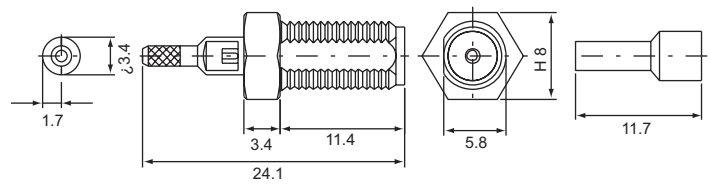


PART NO.	Ω	CABLE TYPE	A	B	C	D
S-231L-1A	50	RG174U(316U)	5.8	19.8	7	10
S-232L-2A	50	RG174U(316U)	5.8	18.5	7	6.9

**SMA FEMALE, Crimp type
Bulkhead receptacle
S-231M-SQ for RG178U**

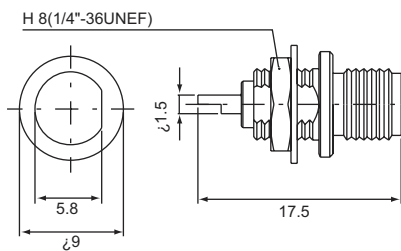


**SMA FEMALE, Crimp type
Bulkhead receptacle
S-231M-1B for RG178U**

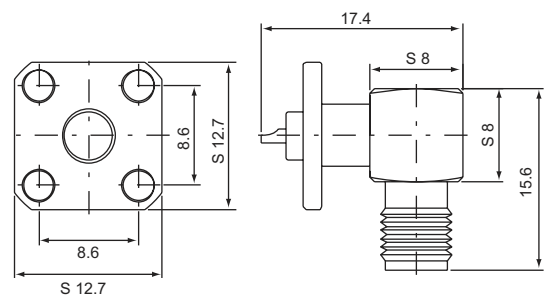


Ps. The frequency up to 6 GHz.

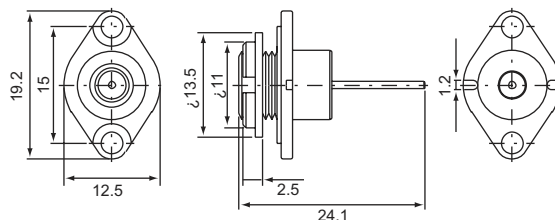
**SMA FEMALE, Solder type
Bulkhead receptacle
S-235**



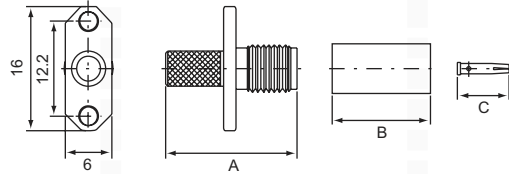
**SMA FEMALE, Solder type
Angle panel receptacle
S-265**



**SMA MALE, Solder type
Panel receptacle narrow flange
S-0145**

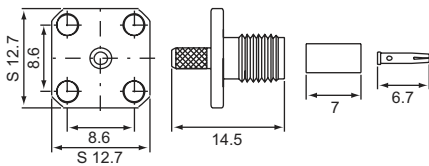


SMA FEMALE, Crimp type
Panel receptacle narrow flange
S-2412

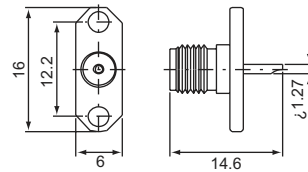


PART NO.	Ω	CABLE TYPE	A	B	C
S-2412F	50	RG58U	17	12.7	6.7
S-2412L	50	RG59U	14.5	7	6.7

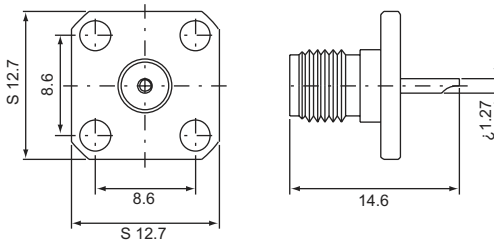
SMA MALE, Crimp type
Panel receptacle square flange
S-2414L for RG174U(316U)



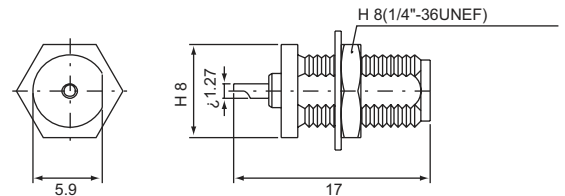
SMA FEMALE, Solder type
Panel receptacle narrow flange
S-2452



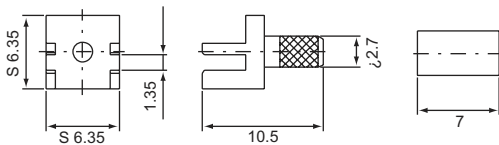
SMA MALE, Solder type
Panel receptacle square flange
S-2454



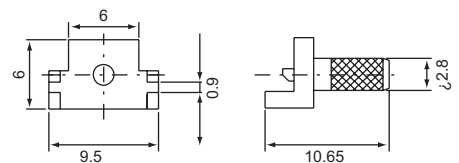
SMA FEMALE, Solder type
S-B215



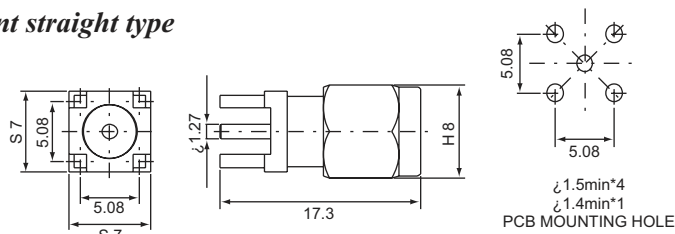
SMA quick type, Crimp type
S-P001L for RG174U(316U)



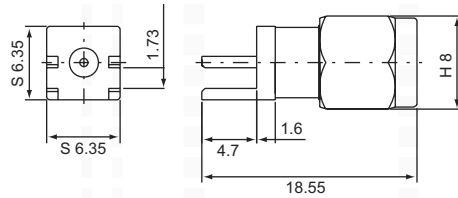
SMA quick type, Screw-on type
S-P002L for RG174U(316U)



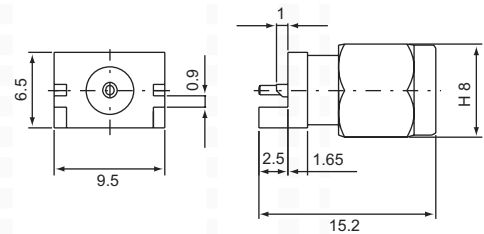
SMA MALE, P.C.B mount straight type
S-P115



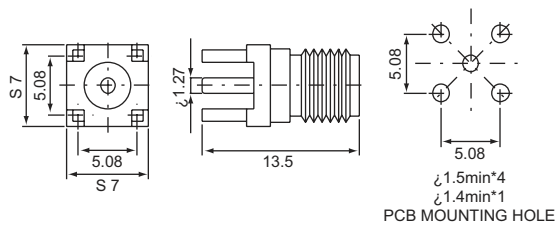
SMA MALE, P.C.B mount
S-P1152



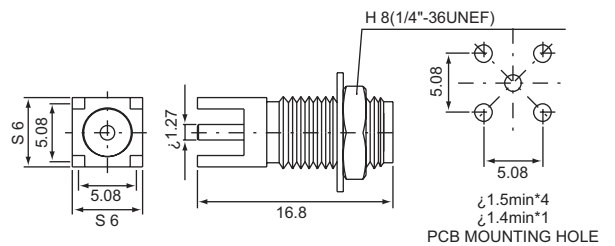
SMA MALE, P.C.B mount
S-P1152-1A



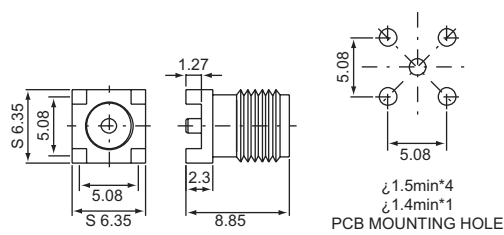
SMA FEMALE, P.C.B mount straight type
S-P215



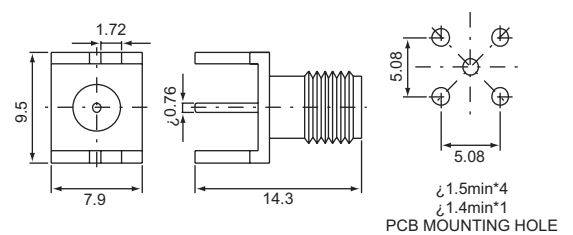
SMA FEMALE, P.C.B mount straight type
S-P215-4A



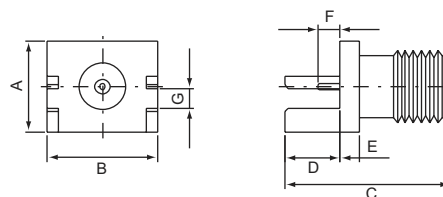
SMA FEMALE, P.C.B mount
S-P215-1T S.M.T



SMA FEMALE, P.C.B mount straight type
S-P2150

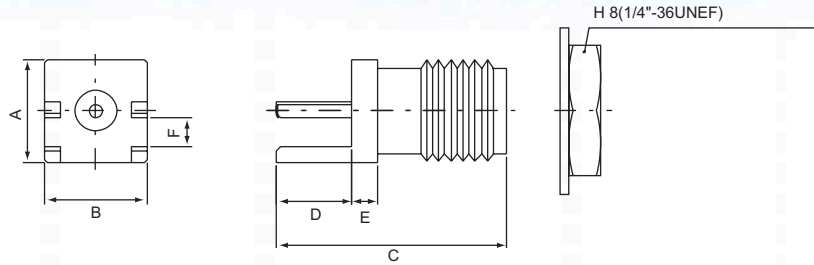


SMA FEMALE, P.C.B mount
S-P2152



PART NO.	Ω	CABLE TYPE	A	B	C	D	E	F	G
S-P2152	50	Welding spot	7.9	9.5	14.3	4.8	1.65	1.9	1.73
S-P2152-1A			7.9	9.5	14.3	4.8	1.65	1.9	1.22

SMA FEMALE, P.C.B mount
S-P2152 NW

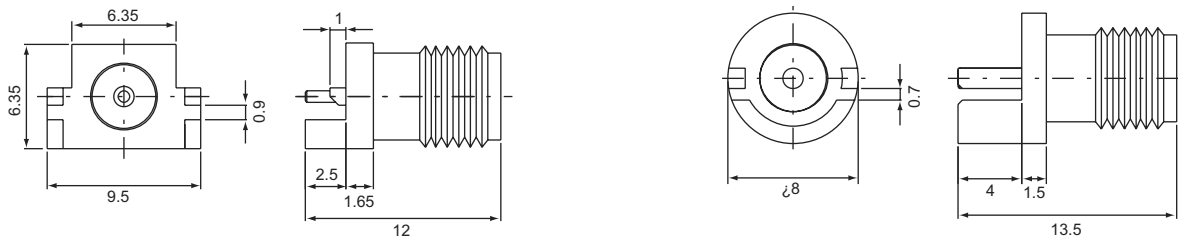


Ps. NW is with NUT & WASHER

PART NO.	Ω	CABLE TYPE	A	B	C	D	E	F
S-P2152-2A	50	Welding spot	6.35	6.35	14.2	4.7	1.6	1.73
S-P2152-3A			6.35	6.35	26.3	4.7	1.6	1.73
S-P2152-4A			8	9.5	13.5	4	1.5	0.95
S-P2152-5A-NW			6.35	6.35	17.5	4.7	1.6	1.73
S-P2152-6A-NW			7.9	9.5	17.45	4.75	1.65	1.73
S-P2152-7A			7.9	9.5	14.25	4.75	1.65	1.73
S-P2152-8A-NW			8	9.5	17.5	4.7	1.6	0.95
S-P2152-9A			6.35	6.35	14.2	4.7	1.6	1.22
S-P2152-10A			7.9	9.5	14.3	5.4	1.3	0.9
S-P2152-12A			7	7	13.5	2.5	1	1.7
S-P2152-15A-NW			6.35	6.35	17.5	4.7	1.6	1.22

SMA FEMALE, P.C.B mount
S-P2152-11A

S-P2152-14A



SMA FEMALE, P.C.B mount right angle
S-P225

