

SMB SERIES CONNECTORS

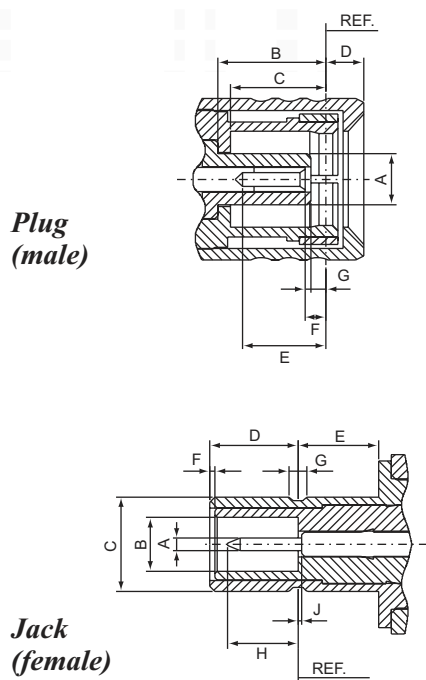
50 ohm 0-4GHz

The SMB subminiature coaxial connectors are semi-precision, that provide repeatable electrical performance to 4GHz with 50 ohm impedance.

It's smaller physical size and snap-on coupling make the SMB an ideal general purpose connector where packaging density, ease of mating/unmating and economy are prerequisites.

The SMB connectors are applications for telecommunications, test equipment, instrumentation and GPS.

Interface Dimensions:

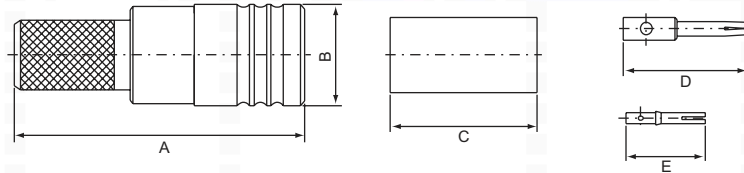


	Plug		Jack	
	min.	max.	min.	max.
A	-	2.06/.081	0.48/.019	0.53/.021
B	3.58/.141	-	2.08/.082	-
C	3.58/.141	-	3.66/.144	3.71/.146
D	-	1.63/.064	3.33/.131	3.58/.141
E	2.97/.117	-	1.65/.065	-
F	0.18/.007	0.94/.037	0.00/.000	-
G	0.18/.007	-	0.69/.027	0.94/.037
H	-	-	-	2.97/.117
J	-	-	-	0.18/.007

Electrical:

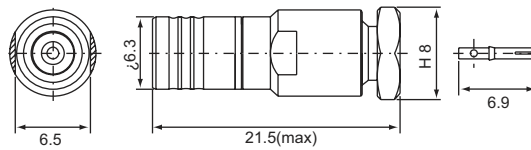
Impedance	50 ohm
Frequency Range	0 to 4.0 GHz
VSWR	RG-178U→ 1.3+0.04 f max GHz(Straight) 1.45+0.06 f max GHz(Right angle)
	RG-316U→ 1.25+0.04 f max GHz(Straight) 1.35+0.04 f max GHz(Right angle)
Insertion Loss	0.3dB max @ 1.5GHz(Straight)
	0.6dB max @ 1.5GHz(Right angle)

SMB MALE, Crimp type
S1-111

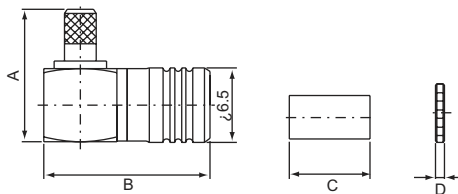


PART NO.	Ω	CABLE TYPE	A	B	C	D	E
S1-111F	50,75	RG58U	18.9	6.5	12.7	8.1	/
S1-111M		RG178U					
S1-111N		RG179U					
S1-111L	50,75	RG174U(316U)	17.4	6.5	8.7		7.1

SMB MALE, Screw-on type
S1-112

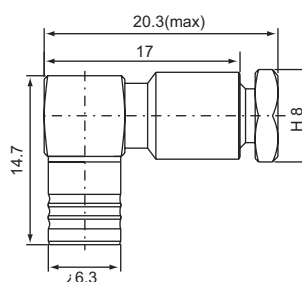


SMB MALE, Crimp type right angle
S1-121

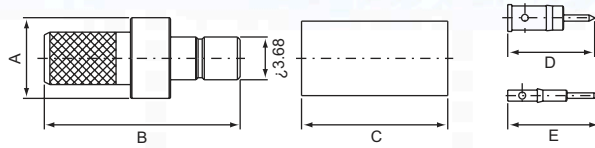


PART NO.	Ω	CABLE TYPE	A	B	C	D
S1-121L	50,75	RG174U(316U)	13	14.7	8.7	0.8
S1-121M		RG178U				
S1-121N		RG179U				
S1-121L-2	50,75	RG274U(316U)	11.5	14.45	7	0.8

SMB MALE, Screw-on type
S1-122 right angle

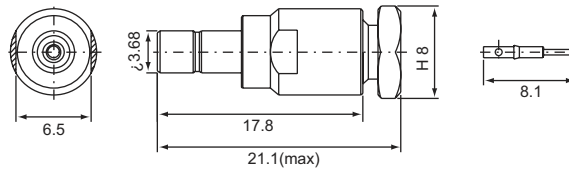


SMB FEMALE, Crimp type
S1-211

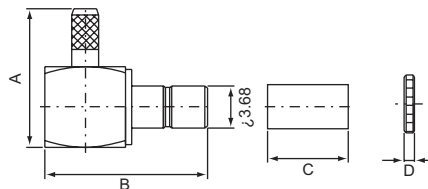


PART NO.	Ω	CABLE TYPE	A	B	C	D	E
S1-211F	50,75	RG58U	7	17	12.7	7.6	/
S1-211M		RG178U					
S1-211N		RG179U					
S1-211L	50,75	RG174U(316U)	6.3	17	8.7		8.1

SMB FEMALE, Screw-on type
S1-212

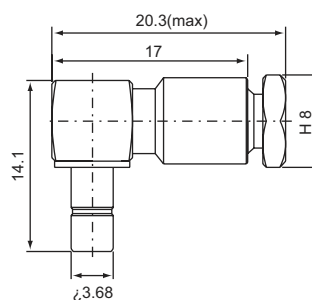


SMB FEMALE, Crimp type right angle
S1-221

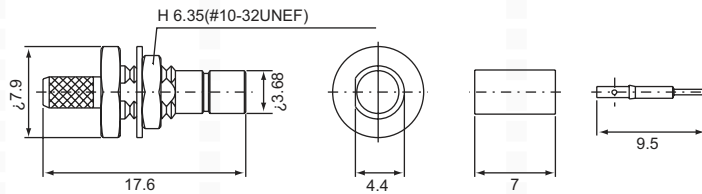


PART NO.	Ω	CABLE TYPE	A	B	C	D
S1-221L	50,75	RG58U	15	15.1	12.7	0.8
S1-221M		RG178U				
S1-221N		RG179U				
S1-221L	50,75	RG174U(316U)	12	14.1	7	0.8
S1-211L-1						

SMB FEMALE, Screw-on type
S1-222 right angle

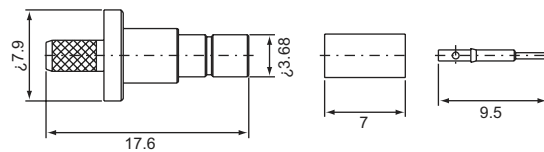


SMB FEMALE, Crimp type
Bulkhead receptacle
S1-231



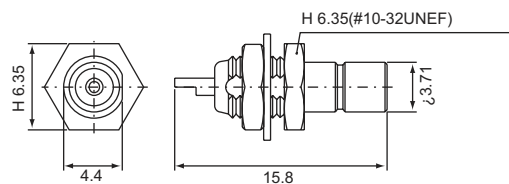
PART NO.	Ω	CABLE TYPE
S1-231L	50	RG174U(316U)
S1-231L	75	RG174U(316U)
S1-231M	50	RG178U
S1-231N	50	RG179U

SMB FEMALE, Crimp type
Bulkhead receptacle
S1-231-2A

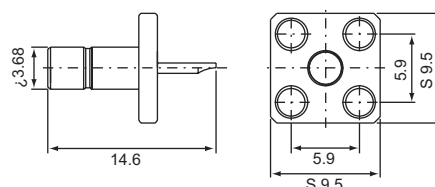


PART NO.	Ω	CABLE TYPE
S1-231L-2A	50	RG174U(316U)
S1-231M-2A		RG178U
S1-231N-2A		RG179U

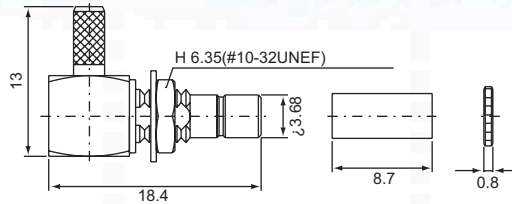
SMB FEMALE, Solder type
Bulkhead receptacle
S1-235



SMB FEMALE, Solder type
Panel receptacle
S1-245

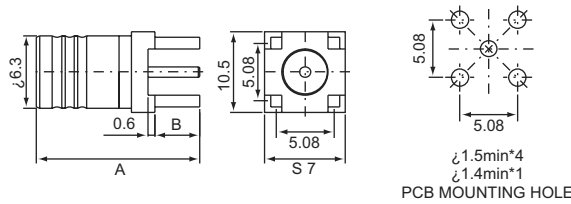


SMB FEMALE, Crimp type right angle
S1-B221



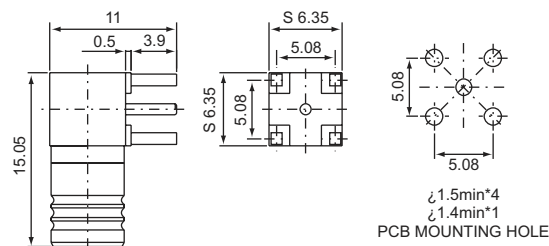
PART NO.	Ω	CABLE TYPE
S1-B221L	50,75	RG174U(316U)
S1-B221M		RG178U
S1-B221N		RG179U

SMB MALE, P.C.B mount
S1-P115

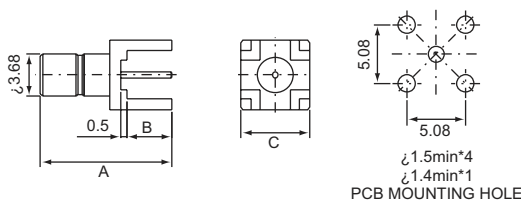


PART NO.	Ω	A	B
S1-P115	50,75	13.1	3.9
S1-P115-1A	50,75	14.2	3.9

SMB MALE, P.C.B mount Right angle
S1-P125-1A

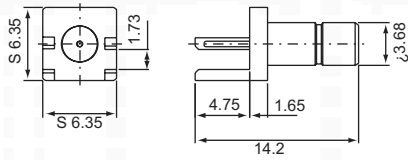


SMB MALE, P.C.B mount
S1-P215

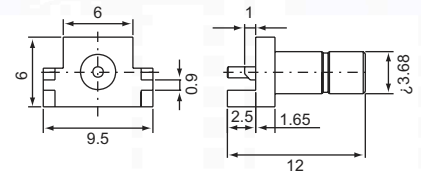


PART NO.	Ω	A	B	C
S1-P215	50,75	11.4	3.9	6.35
S1-P215-1A	50,75	11.4	3.9	6

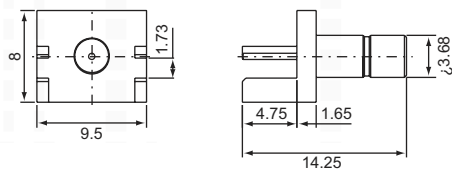
SMB FEMALE, P.C.B mount
S1-P2152-1A



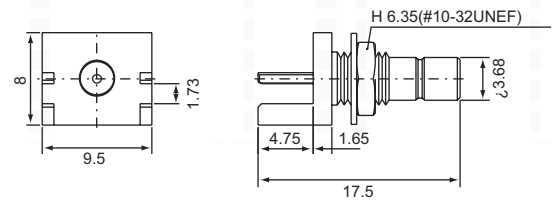
SMB FEMALE, P.C.B mount
S1-P2152-2A



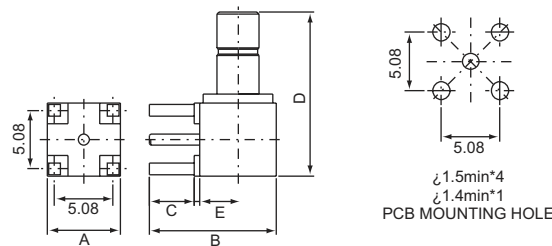
SMB FEMALE, P.C.B mount
S1-P2152-3A



SMB FEMALE, P.C.B mount
S1-P2152-1B

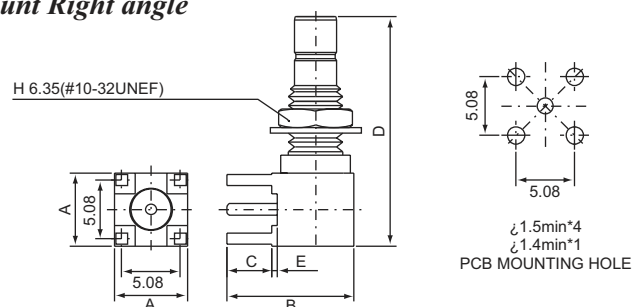


SMB FEMALE, P.C.B
mount Right angle
S1-P225



PART NO.	Ω	A	B	C	D	E
S1-P225	50,75	6.35	11	3.9	14.25	0.5
S1-P225-1A	50,75	6.3	11	2.25	14.2	0.5
S1-P225-4A	50,75	6.35	9.2	2.1	14.25	0.5
S1-P225-5A	50,75	6.5	10.5	3.4	12.9	0.7
S1-P225-6A	50,75	6.35	10.3	2.8	12.7	0.5
S1-P2254	50,75	6.35	11.1	4	12.8	0.7

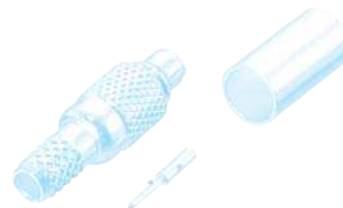
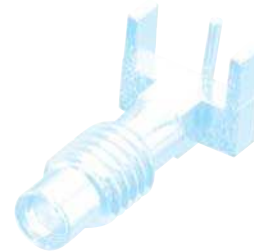
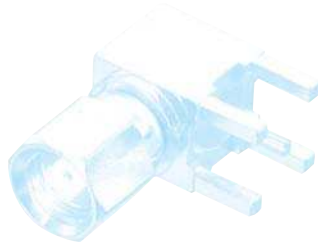
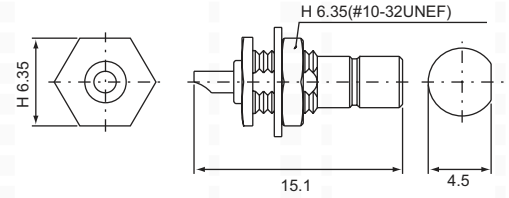
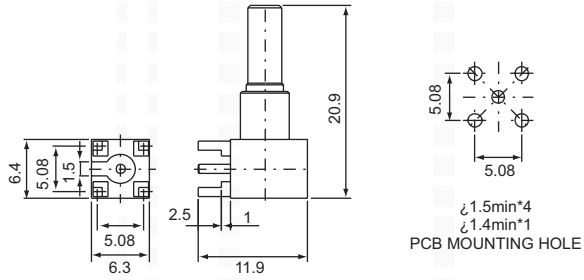
SMB FEMALE, P.C.B mount Right angle
S1-P225



PART NO.	Ω	A	B	C	D	E
S1-P225-2A	50,75	6.35	11	3.9	19.9	0.5
S1-P225-7A	50,75	7.92	11.61	3.94	20.62	0.51
S1-P225-8A	50,75	6.5	11.61	3.94	19.2	0.51

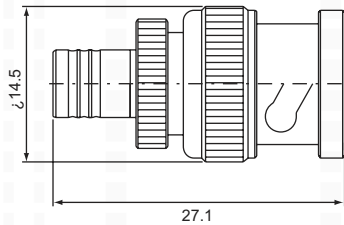
SMB FEMALE, P.C.B mount Right angle
S1-P225-3A

SMB FEMALE, Solder type Panel receptacle
S1-P235

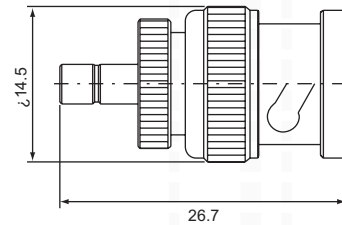


SMB SERIES ADAPTERS

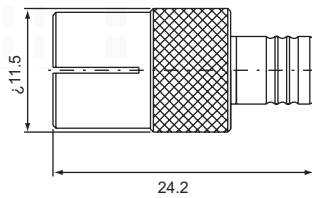
SMB male-BNC male
S1B-311 (50Ω,75Ω)



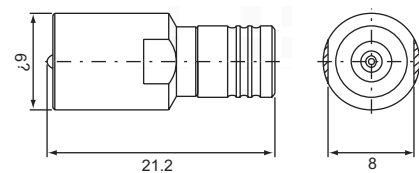
SMB female-BNC male
S1B-321 (50Ω,75Ω)



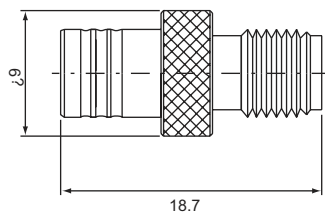
SMB male-EUROPEAN female (50Ω,75Ω)
S1E-312



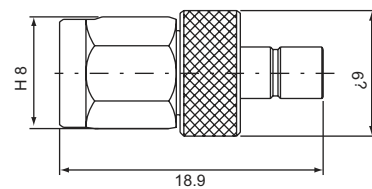
SMB male-FME male
NIS1-311 (50Ω,75Ω)



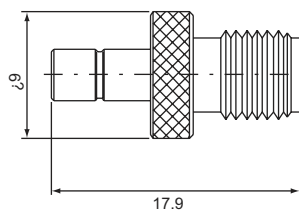
SMB male-SMA male
S1S-312 (50Ω,75Ω)



SMB female-SMA male
S1S-321 (50Ω,75Ω)



SMB female-SMA female (50Ω,75Ω)
S1S-322



double SMB male
S1-311 (50Ω,75Ω)



double SMB female bulkhead receptacle
S1-332 (50Ω,75Ω)

