

SMC SERIES CONNECTORS

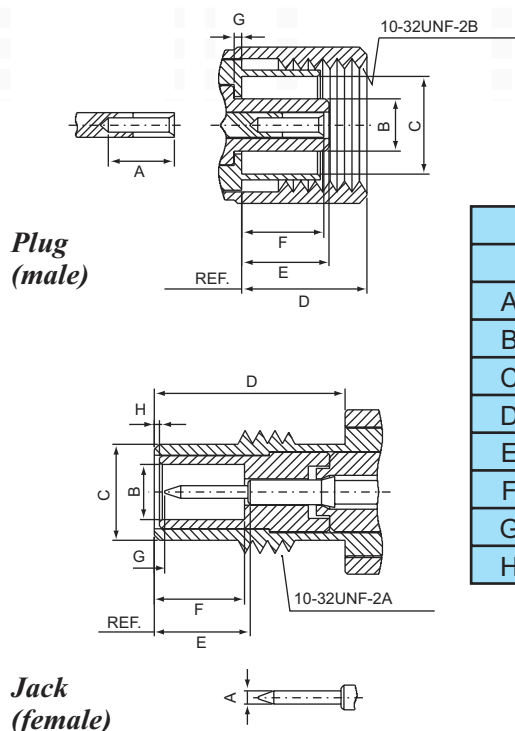
50 ohm 0-4GHz/75 ohm

SMC connectors are the same to the SMB in general size and performance, the main feature threaded couplings rather than snap-on types.

It's small size, reliable performance and economy make the SMC an excellent consideration where packaging density is a must.

The threaded coupling ensures peak performance in applications where vibration or shock maybe a designed consideration.

Interface Dimensions:

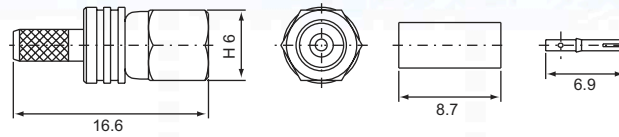


| | Plug | | Jack | |
|---|-----------|-----------|-----------|-----------|
| | min. | max. | min. | max. |
| A | 2.79/.10 | - | 0.48/.019 | 0.53/.021 |
| B | - | 2.60/.081 | 2.08/.082 | - |
| C | 3.73/.147 | - | - | 3.71/.146 |
| D | - | 5.92/.233 | 5.94/.234 | - |
| E | - | 3.40/.134 | 3.40/.134 | - |
| F | 2.85/.112 | 3.40/.134 | 3.40/.134 | - |
| G | 0.00/.000 | - | 0.61/.024 | - |
| H | - | - | 0.00/.000 | - |

Electrical:

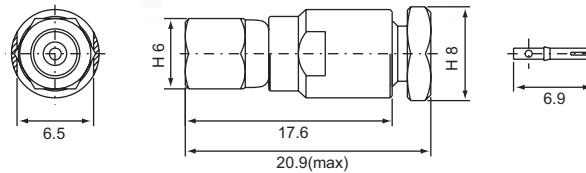
| | |
|-----------------|---|
| Impedance | 50 ohm / 75 ohm |
| Frequency Range | 0 to 10.0 GHz |
| VSWR | RG-178U→ 1.25+0.04 f max GHz(Straight) 1.4+0.06 f max GHz(Right angle) |
| | RG-316U→ 1.2+0.04 f max GHz(Straight) 1.3+0.04 f max GHz(Right angle) |
| Insertion Loss | 0.25dB max @ 4GHz(Straight) |
| | 0.6dB max @ 4GHz(Right angle) |

SMC MALE, Crimp type straight
S2-111



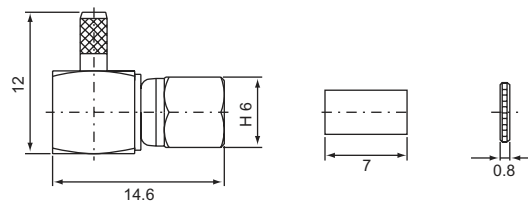
| PART NO. | Ω | CABLE TYPE |
|----------|----------|--------------|
| S2-111L | 50,75 | RG174U(316U) |
| S2-111M | | RG178U |
| S2-111N | | RG179U |

SMC MALE, Screw-on type straight
S2-112



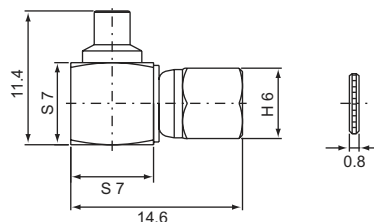
| PART NO. | Ω | CABLE TYPE |
|----------|----------|--------------|
| S2-112L | 50,75 | RG174U(316U) |
| S2-112M | | RG178U |
| S2-112N | | RG179U |

SMC MALE, Crimp type right angle
S2-121

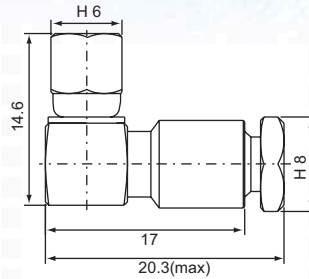


| PART NO. | Ω | CABLE TYPE |
|----------|----------|--------------|
| S2-121L | 50,75 | RG174U(316U) |
| S2-121M | | RG178U |
| S2-121N | | RG179U |

SMC MALE, Crimp type right angle
S2-121-085 for RG405U

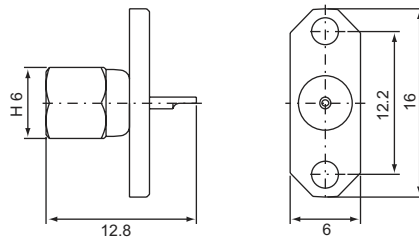


SMC MALE, Crimp type right angle
S2-122

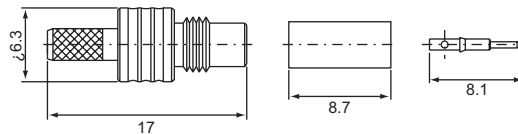


| PART NO. | Ω | CABLE TYPE |
|----------|-------|--------------|
| S2-122L | 50,75 | RG174U(316U) |
| S2-122M | | RG178U |
| S2-122N | | RG179U |

SMC MALE, Solder type Panel receptacle narrow flange
S2-1452L

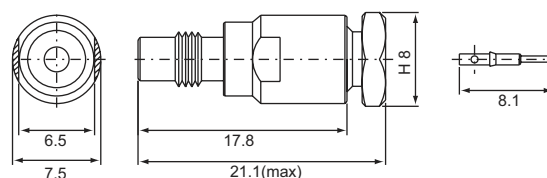


SMC FEMALE, Crimp type straight
S2-211

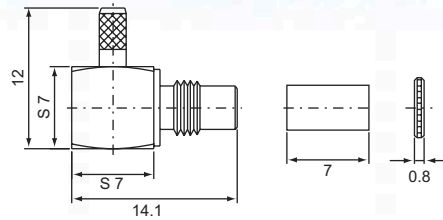


| PART NO. | Ω | CABLE TYPE |
|----------|-------|--------------|
| S2-211L | 50,75 | RG174U(316U) |
| S2-211M | | RG178U |
| S2-211N | | RG179U |

SMC FEMALE, Screw-on type straight
S2-212L for RG174U

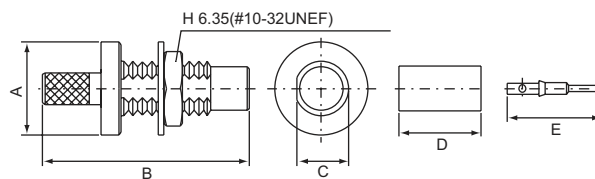


SMC FEMALE, Crimp type right angle
S2-221



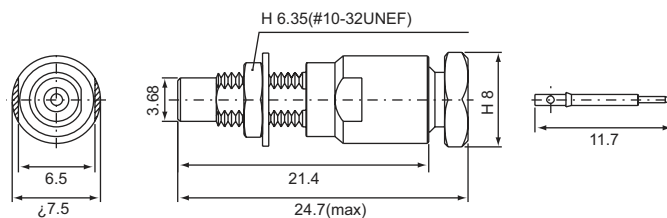
| PART NO. | Ω | CABLE TYPE |
|----------|-------|--------------|
| S2-221L | 50,75 | RG174U(316U) |
| S2-221M | | RG178U |
| S2-221N | | RG179U |

SMC FEMALE, Crimp type Bulkhead receptacle
S2-231

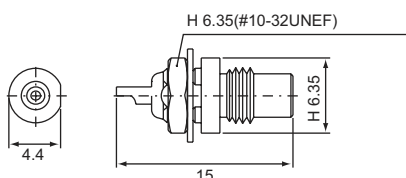


| PART NO. | Ω | CABLE TYPE | A | B | C | D | E |
|----------|-------|--------------|-----|------|-----|---|-----|
| S2-231F | 50,75 | RG174U(316U) | 7.9 | 17.6 | 4.4 | 7 | 8.1 |
| S2-231M | | RG178U | | | | | |
| S2-231N | 50,75 | RG179U | 7.9 | 17.6 | 4.4 | 7 | 9.5 |

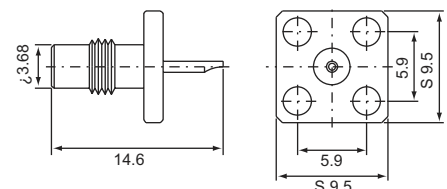
SMC FEMALE, Screw-on type Bulkhead receptacle
S2-232L for RG174U



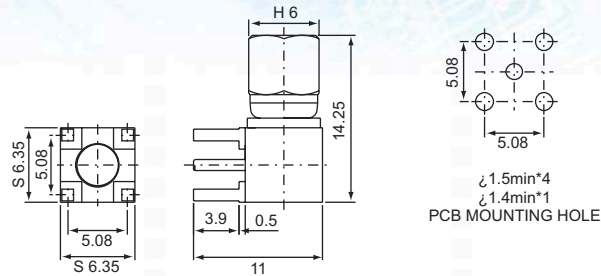
SMC FEMALE, Solder type Bulkhead receptacle
S2-235



SMC FEMALE, Solder type Panel receptacle
S2-245

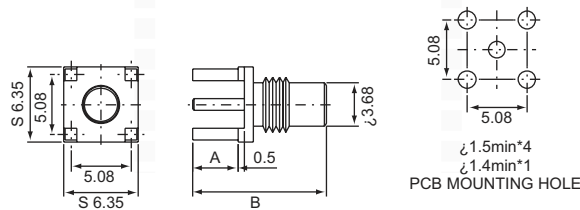


SMC MALE, Solder type P.C.B mount
S2-P125



PCB MOUNTING HOLE
 $\varnothing 1.5\text{min} \times 4$
 $\varnothing 1.4\text{min} \times 1$

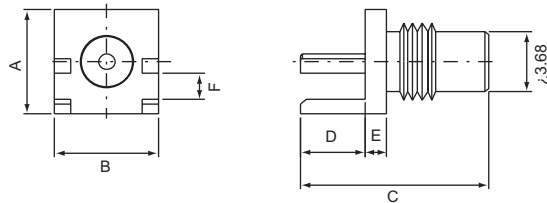
SMC FEMALE, Solder type straight P.C.B mount
S2-P215



PCB MOUNTING HOLE
 $\varnothing 1.5\text{min} \times 4$
 $\varnothing 1.4\text{min} \times 1$

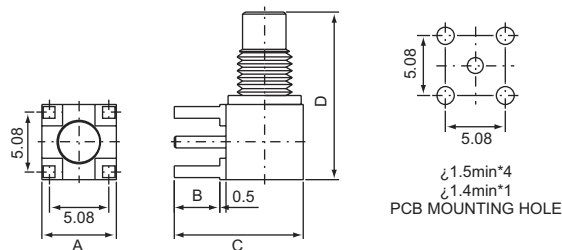
| PART NO. | Ω | A | B |
|----------|----------|-----|------|
| S2-P215 | 50,75 | 3.9 | 11.4 |
| S2-P2150 | 50,75 | 3.9 | 11.4 |

SMC FEMALE, Solder type straight P.C.B mount
S2-P2152



| PART NO. | Ω | A | B | C | D | E | F |
|---------------|----------|------|------|-------|------|------|------|
| S2-P2152 | 50,75 | 6.35 | 6.35 | 11.4 | 3.9 | 1.3 | 1.57 |
| S2-P2152-1A | | 7.9 | 9.5 | 14.25 | 4.75 | 1.65 | 1.73 |
| S2-P2152-1A-1 | | 7.9 | 9.5 | 14.25 | 4.75 | 1.65 | 1.22 |

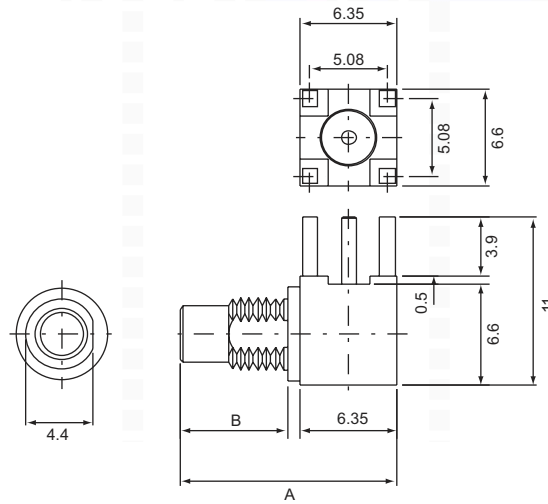
SMC FEMALE, Solder type right angle P.C.B mount
S2-P225



PCB MOUNTING HOLE
 $\varnothing 1.5\text{min} \times 4$
 $\varnothing 1.4\text{min} \times 1$

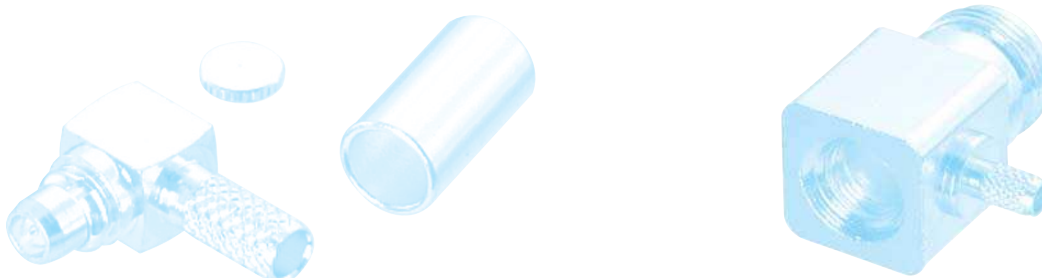
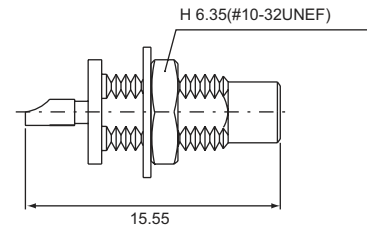
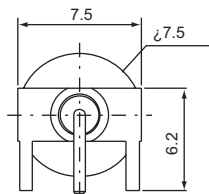
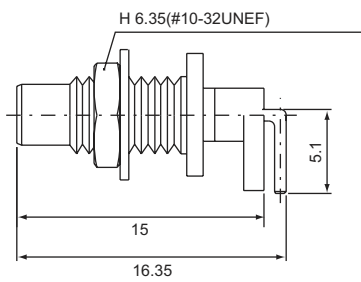
| PART NO. | Ω | CABLE TYPE | A | B | C | D |
|------------|----------|--------------|------|------|----|-------|
| S2-P225 | 50,75 | WELDING SPOT | 6.35 | 3.9 | 11 | 14.25 |
| S2-P225-1A | | | 6.3 | 2.25 | 11 | 14.2 |

SMC FEMALE, Solder type right angle P.C.B mount
S2-P225



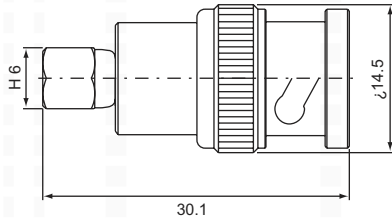
| PART NO. | Ω | CABLE TYPE | A | B |
|------------|----------|--------------|-------|------|
| S2-P225-1B | 50,75 | WELDING SPOT | 14.25 | 7.1 |
| S2-P225-2B | | | 17.35 | 10.2 |

SMC FEMALE, Solder type
Bulkhead receptacle
S2-P235

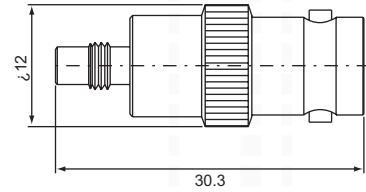


SMC SERIES ADAPTERS

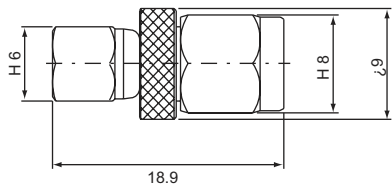
SMC male-BNC male
S2B-311 (50Ω,75Ω)



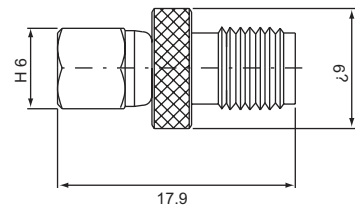
SMC female-BNC female
S2B-322 (50Ω,75Ω)



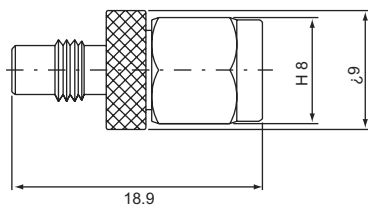
SMC male-SMA male
S2S-311 (50Ω,75Ω)



SMC male-SMC female
S2S-312 (50Ω,75Ω)



SMC female-SMA male
S2S-321 (50Ω,75Ω)



SMC female-SMA female
S2S-322 (50Ω,75Ω)

