

SMP SERIES CONNECTORS

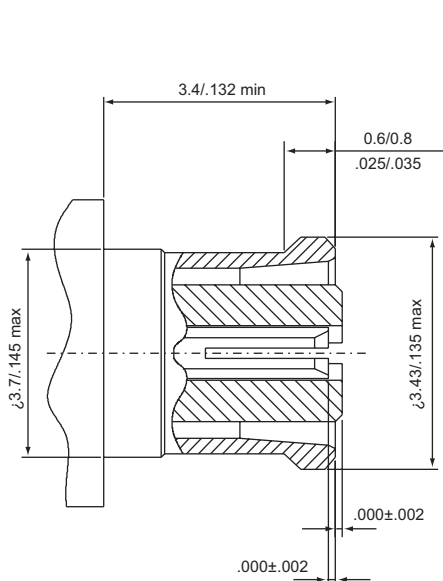
50 ohm 0-4GHz

SMP connectors are designed with maximum packaging density in mind. Their low profile construction allows for module to module flush mounting with a center to center spacing of 0.170".

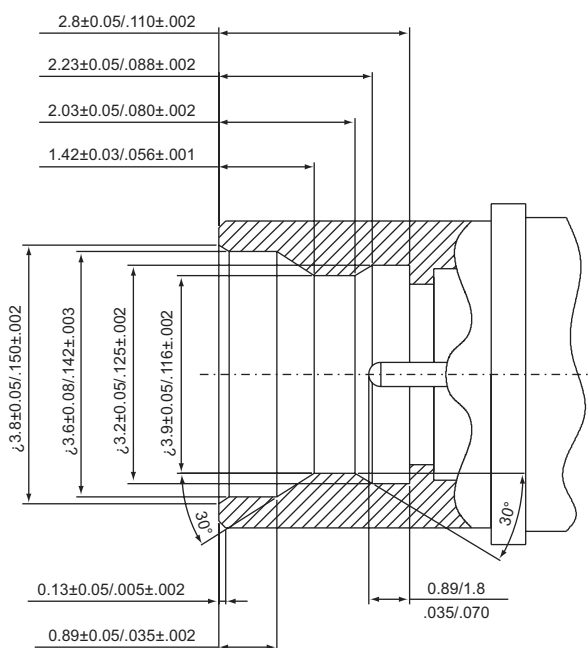
Connectors are user friendly with simple self contained designs which equates to low installation costs and reduced fabrication time for cable assemblies circuit packages.

The rugged SMP interface can withstand harsh environments of mechanical shock and vibration, typically found in military or aerospace related applications.

Interface Dimensions:



Plug(male)

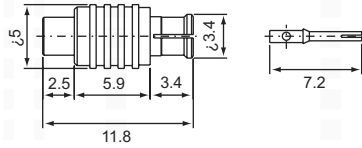


Jack(female)

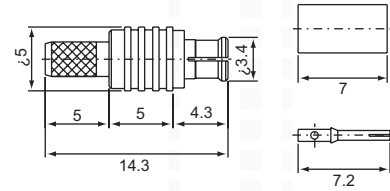
Electrical:

Impedance	50 ohm
Frequency Range	DC to 40 GHz

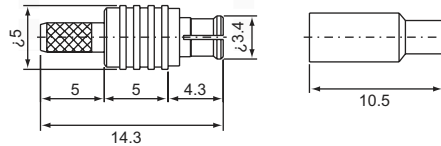
SMP MALE, Crimp type
S3-111-085 for RG405U



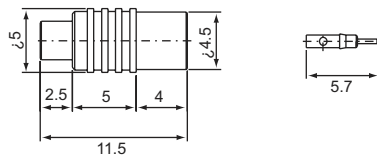
SMP MALE, Crimp type
S3-111L for RG174U(316U)



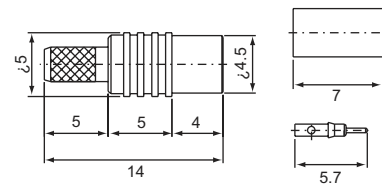
SMP MALE, Crimp type
S3-111M for RG178U



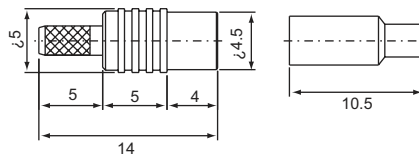
SMP MALE, Crimp type
S3-211-085 for RG405U



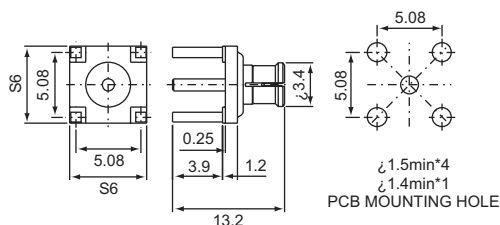
SMP FEMALE, Crimp type
S3-211L for RG174U(316U)



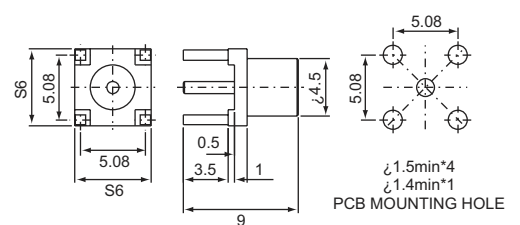
SMP MALE, Crimp type
S3-211M for RG178U



SMP MALE, Solder type
S3-P115 P.C.B mount



SMP FEMALE, Solder type
S3-P215 P.C.B mount



SMP SERIES ADAPTERS

double SMP male
S3-311

double SMP female
S3-322

