

TNC SERIES CONNECTORS

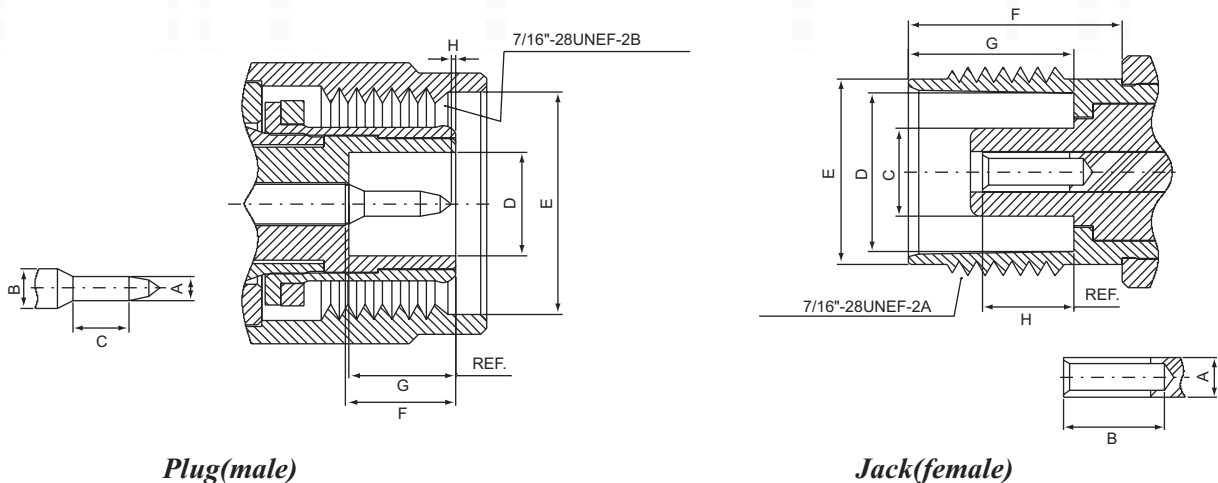
50 ohm 0-11GHz

TNC series connectors are designed to provide low reflection from DC to 11GHz under extreme environmental conditions, especially shock and vibration. They're the same BNC connectors except for their mating threaded coupling.

Cable terminations are available in crimp, clamp, twist-on and solder configurations. their rugged design was initially developed for high vibration environments and popular accepted.

They're used for data transmission, medical and test equipment, microwave components and aerospace applications.

Interface Dimensions:



Plug(male)

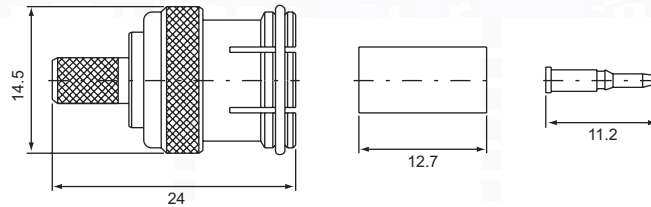
Jack(female)

	Plug		Jack	
	min.	max.	min.	max.
A	1.32/.052	1.37/.054	2.06/.081	2.21/.087
B	2.06/.081	2.21/.087	4.95/.195	-
C	1.98/.078	-	-	4.72/.186
D	4.83/.190	-	8.10/.319	8.15/.321
E	11.18/.440	-	9.60/.378	9.70/.382
F	5.33/.210	5.84/.230	10.52/.414	-
G	5.28/.208	5.79/.228	8.31/.327	8.51/.335
H	0.08/.003	1.02/.040	4.72/.186	5.23/.206

Electrical:

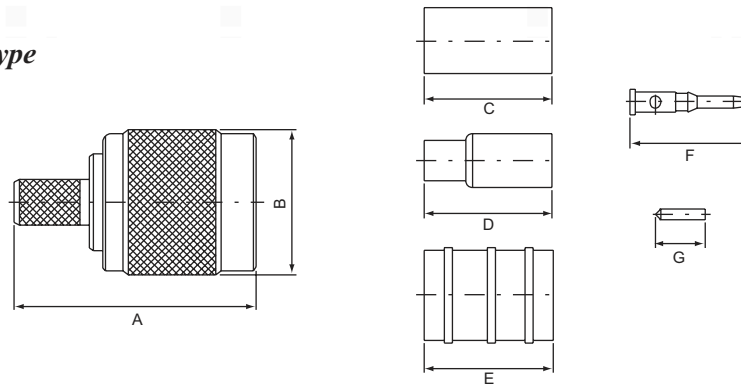
Impedance	50 ohm	75ohm available
Frequency Range	0 to 11.0 GHz	0 to 1.0GHz
VSWR	Straight: 1.3max ; Right angle: 1.35max	
Insertion Loss	0.2dB max @ 3GHz	

TNC QUICK MALE, Crimp type
T-101



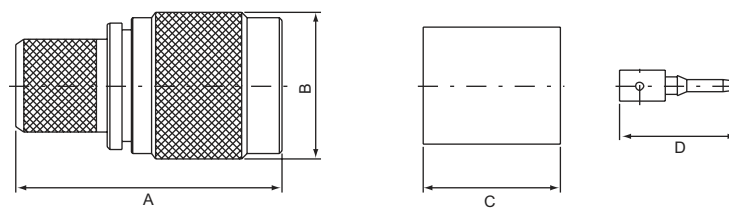
PART NO.	Ω	CABLE TYPE
T-101A	50,75	RG6U
T-101F	50,75	RG58U
T-101G	50,75	RG59U

TNC MALE, Crimp type
T-111



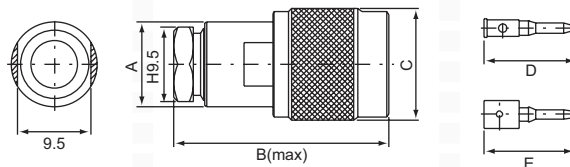
PART NO.	Ω	CABLE TYPE	A	B	C	D	E	F	G
T-111/5D	50,75	5D-2V	24	14.5	12.7			11.8	
T-111-124	50,75	RG124U	24	14.5			12.7	11.8	
T-111A	50,75	RG6U	24	14.5	12.7			11.8	
T-111F		RG58U							
T-111G		RG59U							
T-111-H155-1	50,75	H155	24	14.5	12.7			11.8	
T-111L-00	50,75	RG174U(316U)	24	14.5		12.7		11.8	
T-111L-1	50,75	RG174U(316U)	24	14.5	9.5				4.9
T-111RLF-5	50,75	RLF5	24	14.5	12.7			11.8	

TNC QUICK MALE, Crimp type
T-111



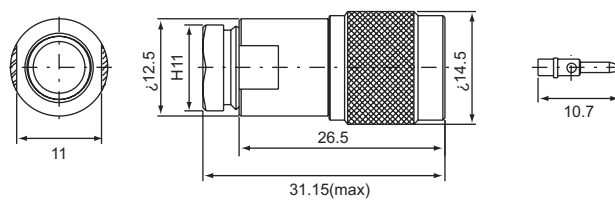
PART NO.	Ω	CABLE TYPE	A	B	C	D
T-111B	50,75	RG213U	26.4	14.5	13.5	11.8
T-111S	50,75	BELDEN-9913	28.1	14.5	15	14.7

TNC MALE, Screw-on type
T-112

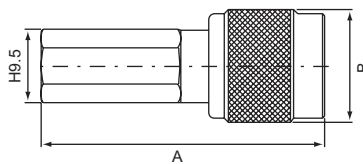


PART NO.	Ω	CABLE TYPE	A	B	C	D	E
T-112(04161)	50,75	RG58U	11	28.1	14.5	11.8	
T-112(04162)	50,75	RG59U					
T-112A	50,75	RG59U	11	27.1	14.5	11.8	
T-112B	50,75	RG8U(213U)	17.5(H16)	27.1	14.5		11.8
T-112C	50,75	RG214U	17.5(H16)	27.1	14.5		11.8
T-112F	50,75	RG58U	11	27.1	14.5	11.8	
T-112G		RG59U					
T-112S	50,75	RG-9913	17.5(H16)	41.4	14.5		11.8
T-112/5D-FB	50,75	5D-FB	17.5(H16)	41.4	14.5		11.8
T-112A-5D	50,75	5D-FB	11	27.1	14.5		11.8
T-112-8D	50,75	8D-FB	17.5(H16)	42.3	14.5		11.8

TNC MALE, Screw-on type
T-112F-1 for RG58U

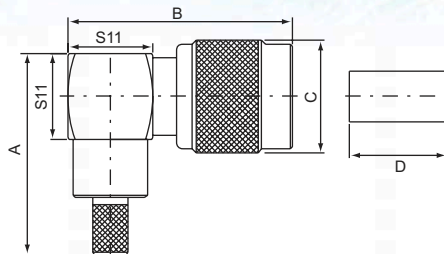


TNC MALE, Twist-on type
T-113



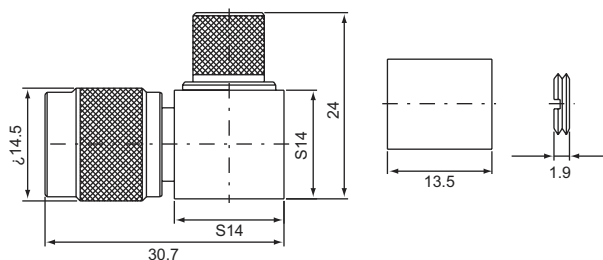
PART NO.	Ω	CABLE TYPE	A	B
T-113A	50,75	RG6U	36.6	14.5
T-113F	50,75	RG58U		
T-113G	50,75	RG59U		

TNC MALE, Crimp type right angle
T-121



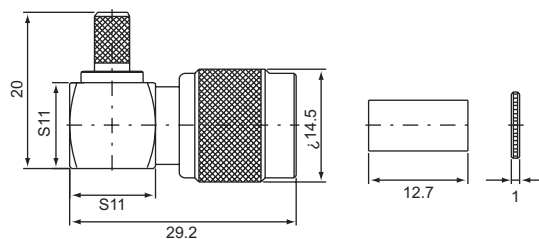
PART NO.	Ω	CABLE TYPE	A	B	C	D
T-121A	50,75	RG6U	26.1	29	14.5	12.7
T-121D	50,75	RG11U	24	30.7	14.5	13.5
T-121F	50,75	RG58U	26.1	29	14.5	12.7
T-121G	50,75	RG59U				

TNC MALE, Crimp type right angle
T-112 Soldering



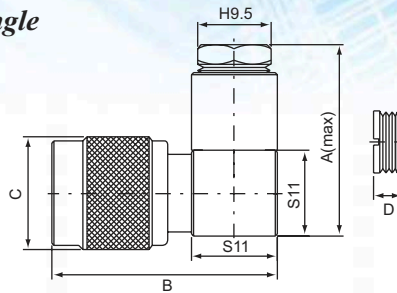
PART NO.	Ω	CABLE TYPE
T-121A-00	50,75	RG6U
T-121B-00	50,75	RG8U(213U)
T-121D-00	50,75	RG11U
T-121F-00	50,75	RG58U
T-121G-00	50,75	RG59U

TNC MALE, Crimp type right angle
T-1210



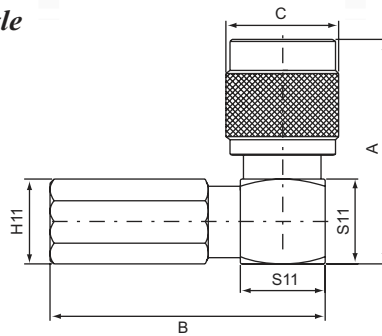
PART NO.	Ω	CABLE TYPE
T-1210A	50,75	RG6U
T-1210F	50,75	RG58U
T-1210G	50,75	RG59U
T-1210L	50,75	RG174U(316U)

TNC MALE, Screw-on type right angle
T-122



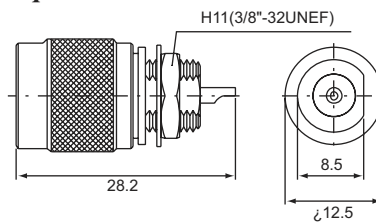
PART NO.	Ω	CABLE TYPE	A	B	C	D
T-122A	50,75	RG8U	24.6	29	14.5	3.6
T-122F	50,75	RG58U				
T-122G	50,75	RG59U				

TNC MALE, Twist-on type right angle
T-123

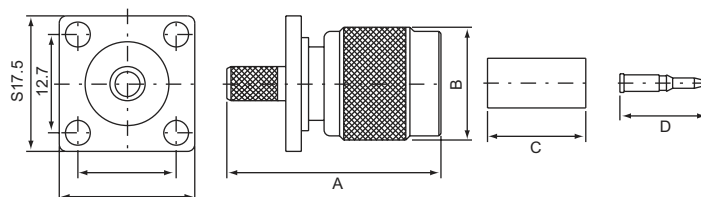


PART NO.	Ω	CABLE TYPE	A	B	C
B-123F	50,75	RG58U	29	35.4	14.5
B-123G	50,75	RG59U			

TNC MALE, Solder type Bulkhead receptacle
T-135

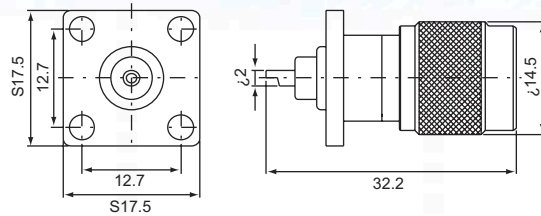


TNC MALE, Crimp type panel receptacle
T-141

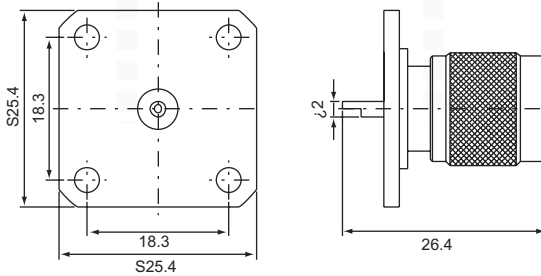


PART NO.	Ω	CABLE TYPE	A	B	C	D
T-141A	50,75	RG8U	27.5	14.5	12.7	11.2
T-141F	50,75	RG58U				
T-141G	50,75	RG59U				

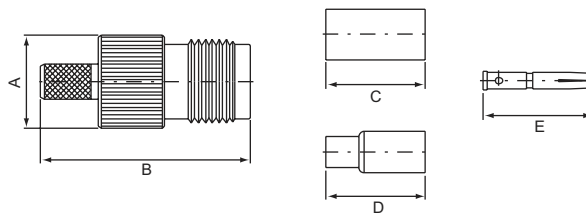
TNC MALE, Solder type Panel receptacle
T-145



TNC MALE, Solder type Panel receptacle
T-1450

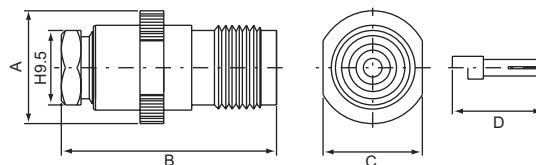


TNC FEMALE, Crimp type
T-211



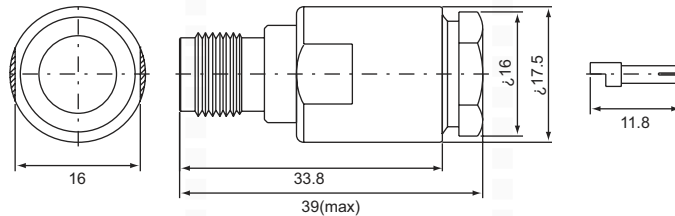
PART NO.	Ω	CABLE TYPE	A	B	C	D	E
T-211A	50,75	RG6U	12	27	12.7	12.5	14.2
T-211F	50,75	RG58U					
T-211G	50,75	RG59U					
T-211L	50,75	RG174U	12	27	12.7	12.5	14.2
T-211/5D-1	50,75	5D-2V	12	27	12.7	12.5	14.2

TNC FEMALE, Screw-on type
T-212

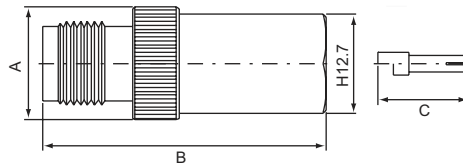


PART NO.	Ω	CABLE TYPE	A	B	C	D
T-212/5D-1	50,75	5D-FB	12	27.9	12.7	11.8
T-212F	50,75	RG58U	14.5	27.7	12.7	11.8
T-212G	50,75	RG59U				

TNC FEMALE, Screw-on type
T-212C for RG9U(214U)

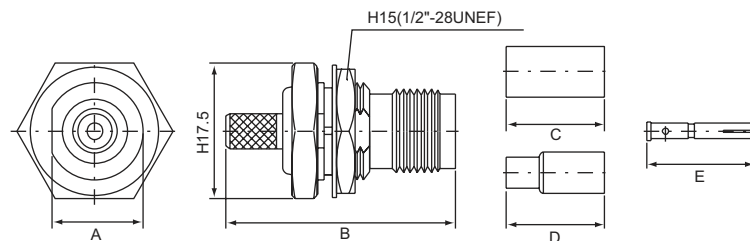


TNC FEMALE, Twist-on type
T-213



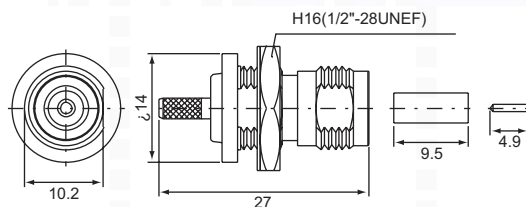
PART NO.	Ω	CABLE TYPE	A	B	C
T-213A	50,75	RG6U	12	38	/
T-213B	50,75	RG8U(213U)	14.5	36.5	11.8
T-213F	50,75	RG58U	12	38	/
T-213G	50,75	RG59U			

TNC FEMALE, Crimp type Bulkhead receptacle
T-231



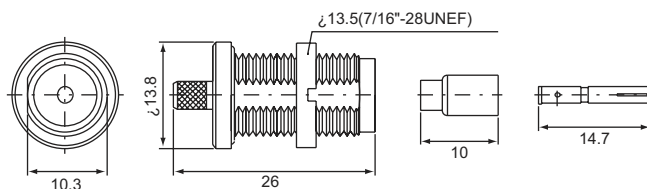
PART NO.	Ω	CABLE TYPE	A	B	C	D	E	E
T-231A-HWP	50,75	RG6U	11.8	29.5	12.7	/	14.7	/
T-231F-HWP	50,75	RG58U						
T-231G-HWP	50,75	RG58U						
T-231G-HWP	50,75	RG174U(316U)	11.8	29.5	/	12.7	14.7	/
T-231L-DB-HWP	50,75	RG174U(316U)	11.8	29.5	/	12.7	14.2	/
T-231L-3B-HWP	50,75	RG174U(316U)	11.8	32.2	/	12.7	14.7	/
T-231L-4B-HWP	50,75	RG174U(316U)	11.8	29.2	9.5	/	/	4.9
T-231P-HWP	50,75	RG55U(223U)	11.8	29.5	12.7	/	14.7	/

TNC FEMALE, Crimp type Bulkhead receptacle
T-2310

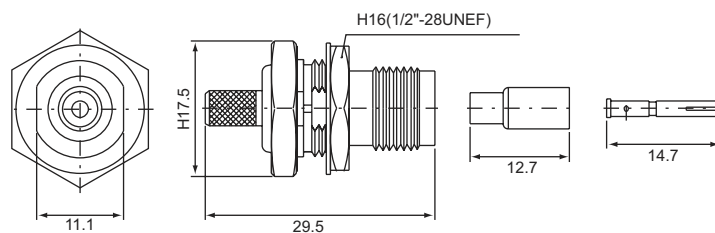


PART NO.	Ω	CABLE TYPE
T-2310A	50,75	RG6U
T-2310F	50,75	RG58U
T-2310G	50,75	RG59U
T-2310L	50,75	RG174U(316U)

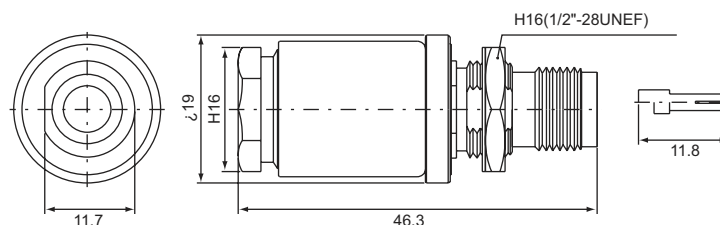
TNC FEMALE, Crimp type Bulkhead receptacle
T-231L-1B-WP for RG174U(316U)



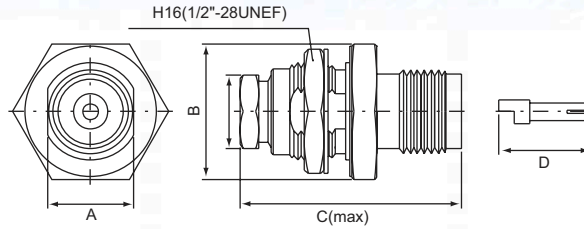
TNC FEMALE, Crimp type Bulkhead receptacle
T-231L D/D-HWP for RG174U(316U)



TNC FEMALE, Screw-on type Bulkhead receptacle
T-232B-WP

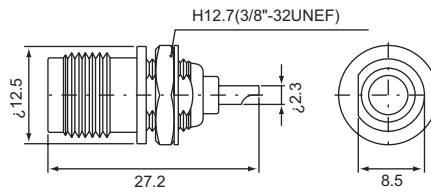


TNC FEMALE, Screw-on type Bulkhead receptacle
T-232

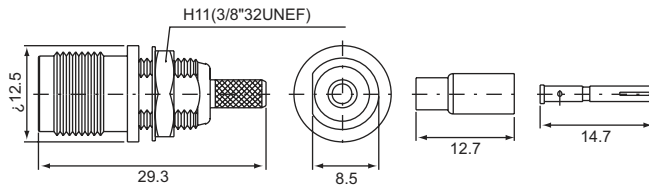


PART NO.	Ω	CABLE TYPE	A	B	C	D
T-232F	50,75	RG58U	11	17.5	28.6	11.8
T-232G	50,75	RG59U				
T-232L	50,75	RG174U				
T-232L-D8	50,75	RG				

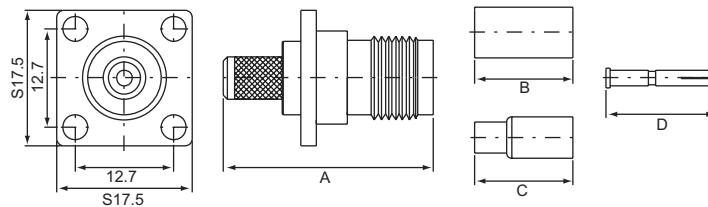
TNC FEMALE, Solder type Bulkhead receptacle
T-235



TNC FEMALE, Crimp type Bulkhead receptacle
T-2351L

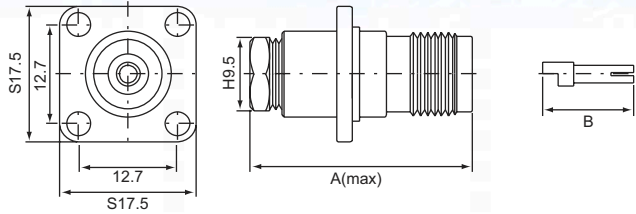


TNC FEMALE, Crimp type Panel receptacle
T-241



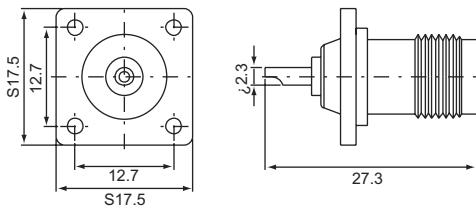
PART NO.	Ω	CABLE TYPE	A	B	C	D
T-241A	50,75	RG6U	27	12.7	/	14.2
T-241F	50,75	RG58U				
T-241G	50,75	RG59U				
T-241L-1-SWP	50,75	RG174U(316U)	28.3	/	12.7	14.7
T-241L	50,75	RG174U(316U)				

TNC FEMALE, Screw-on type Panel receptacle
T-242

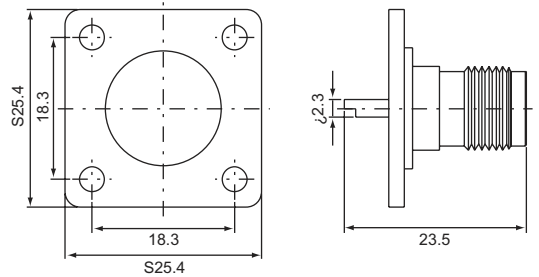


PART NO.	Ω	CABLE TYPE	A	B
T-242F	50,75	RG58U	28.6	11.8
T-242G	50,75	RG59U		
T-242L-1C	50,75	RG174U(316U)	24.5	11.8

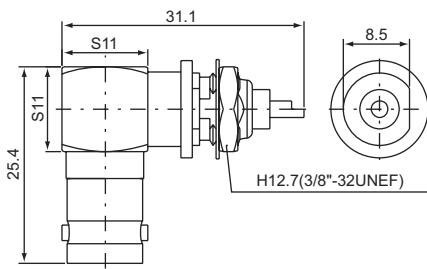
TNC FEMALE, Solder type Panel receptacle
T-245



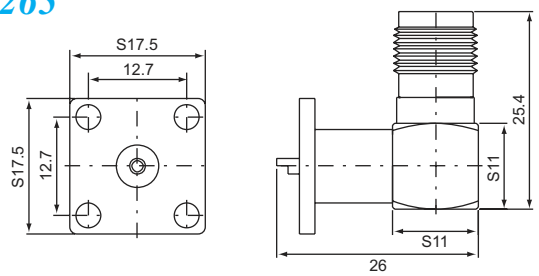
TNC FEMALE, Solder type Panel receptacle
T-2450



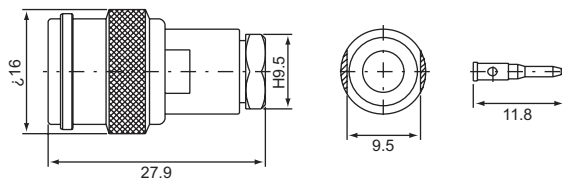
TNC FEMALE, Solder type Right angle bulkhead receptacle
T-255



TNC FEMALE, Solder type Right angle panel receptacle
T-265

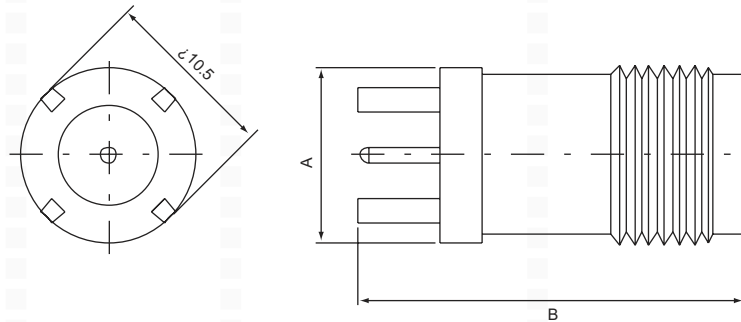


TNC SPECIAL MALE, Screw-on type
T-N112



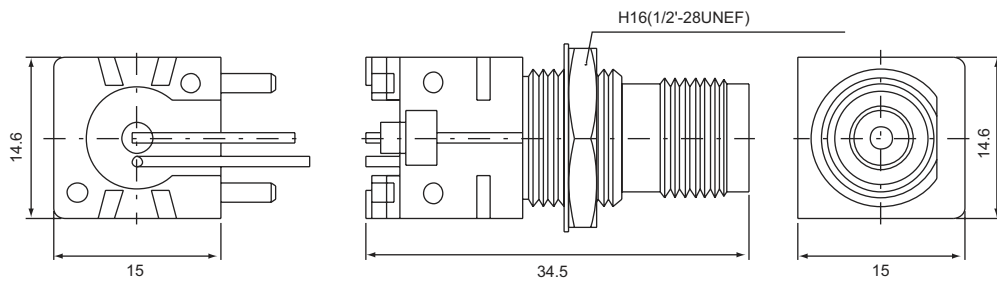
PART NO.	Ω	CABLE TYPE
T-N112A	50,75	RG6U
T-N112F		RG58U
T-N112G		RG59U
T-N112L		RG174U(316U)

TNC FEMALE, Straight PCB mount
T-P215



PART NO.	Ω	A	B
T-P215	50,75	10.5	23.2
T-P215-1A	75		18.9

TNC FEMALE, P.C.B mount Right angle bulkhead receptacle
T-P225



TNC FEMALE, Panel receptacle Pressurized with O-Ring seal
T-P245-SWP

