

UHF SERIES CONNECTORS

50 ohm 0-300MHz

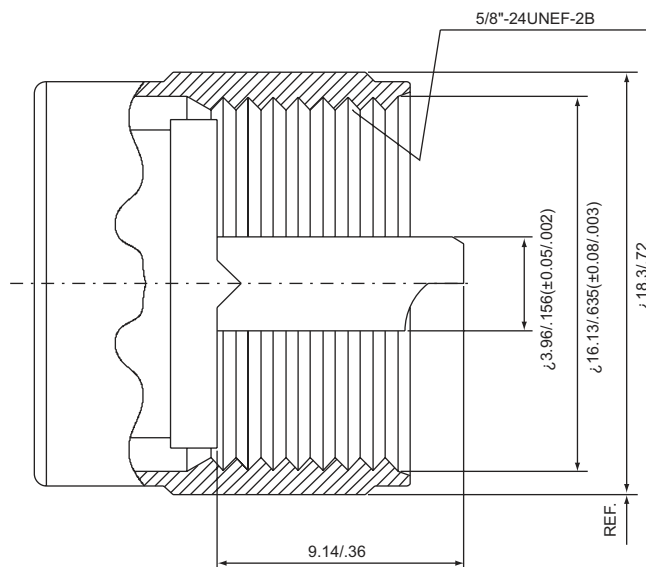
UHF coaxial connectors are popular, economical and one of the first RF connector series to be developed.

They're a general purpose, nonconstant impedance connector which operate from DC to 300 MHz.

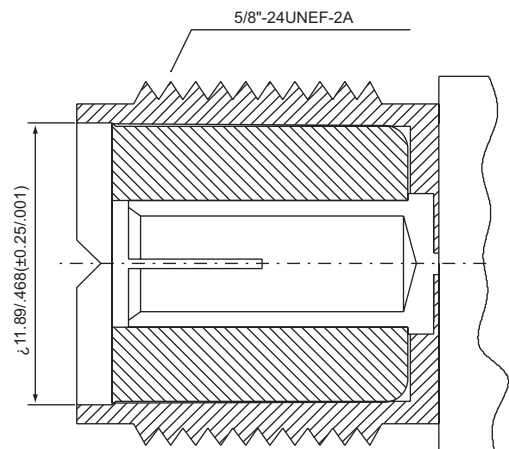
The 5/8"-24 thread coupling and crimp, clamp, twist-on and solder termination provide the UHF with the flexibility that have kept it one of the most popular coaxial connectors over the years.

Low frequency device are antenna connections for CB radios, public address systems, audio, video, mobile radio and test equipmeny.

Interface Dimensions:



Plug(male)

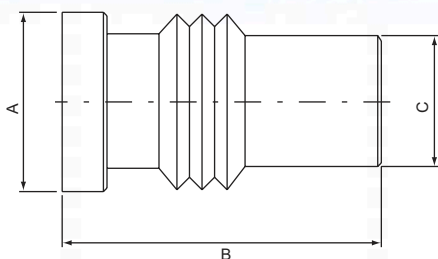


Jack(female)

Electrical:

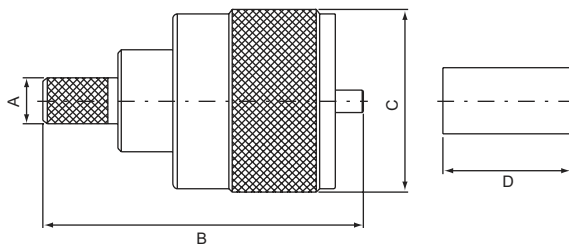
Impedance	Non-constant
Frequency Range	0 to 300 MHz

**Reducer for
RL-259
U-100**



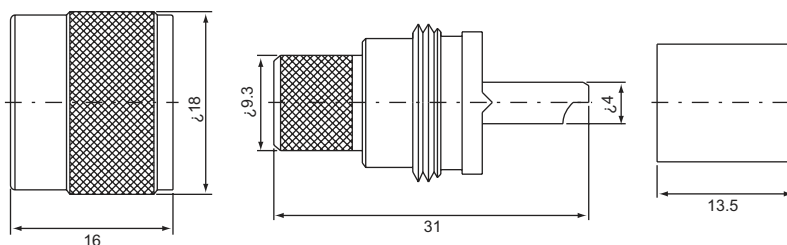
PART NO.	Ω	CABLE TYPE	A	B	C
U-100A	50,75	RG6U	11	19.2	8.1
U-100F		RG58U			
U-100G		RG59U			
U-L100A	50,75	RG6U	11	25.4	8.1
U-L100F		RG58U			
U-L100G		RG59U			

**UHF MALE, Crimp type
U-111**

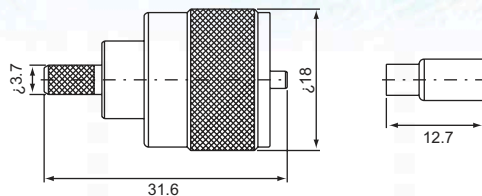


PART NO.	Ω	CABLE TYPE	A	B	C	D
U-111A	50,75	RG6U	6.5	31	18	12.7
U-111F	50,75	RG58U	4.5	31	18	12.7
U-111G	50,75	RG59U	5.5	31	18	12.7

**UHF MALE, Crimp type For RG213 cable
U-111B for RG213U**

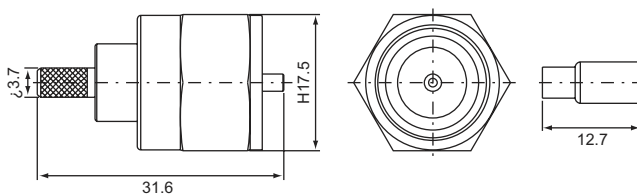


**UHF MALE, Crimp type For
RG174U(316U) cable
U-111**

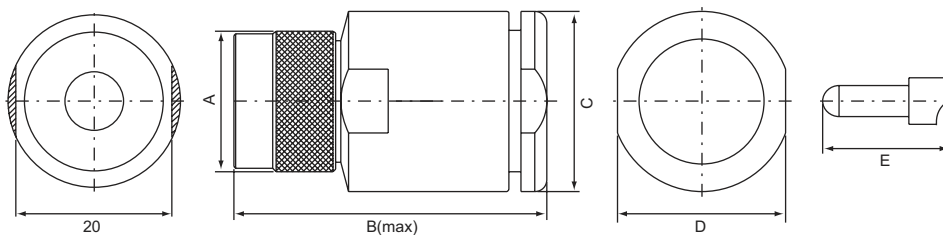


PART NO.	Ω	CABLE TYPE
U-111F	50,75	RG58U
U-111G		RG59U
U-111L		RG174U(316U)
U-111M		RG178U
U-111N		RG179U

**UHF MALE, Crimp type
U-111L-1 for RG174U(316U)**

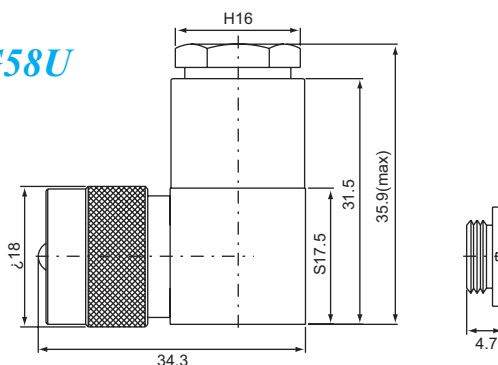


**UHF MALE, Screw-on type
U-112**

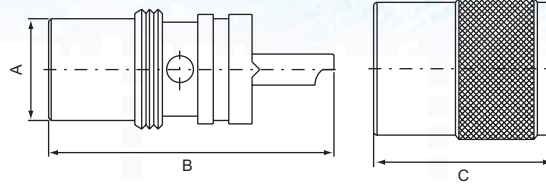


PART NO.	Ω	CABLE TYPE	A	B	C	D	E
U-112B	50,75	RG213U	18	41.6	16		
U-112/5D	50,75	5D-2V	18	38.5	16		
U-112/12D	50,75	12D-2V	18	40.1	23	21.5	16

**UHF MALE, Screw-on type
U-112F Right angle, for RG58U**

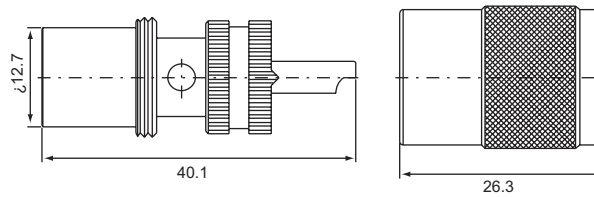


UHF MALE, Twist-on type
U-113

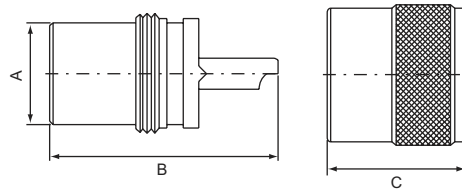


PART NO.	Ω	CABLE TYPE	A	B	C
U-113A	50,75	RG6U	10	36.5	23
U-113B	50,75	RG213U	13	36.5	23
U-113F	50,75	RG58U	10	36.5	23
U-113G	50,75	RG59U	10	36.5	23

UHF MALE, Twist-on type
U-113B-1 for RG8U

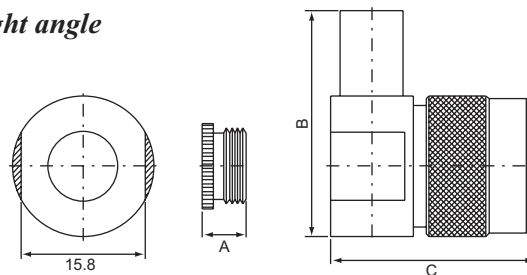


UHF MALE, Twist-on and short type
U-S113



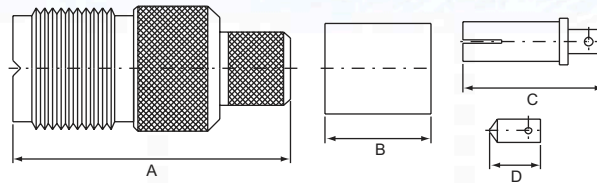
PART NO.	Ω	CABLE TYPE	A	B	C
U-S113A	50,75	RG6U	9	29.2	18
U-S113F	50,75	RG58U	9	30	18
U-S113G	50,75	RG59U	9	30	18

UHF MALE, Twist-on type right angle
U-123



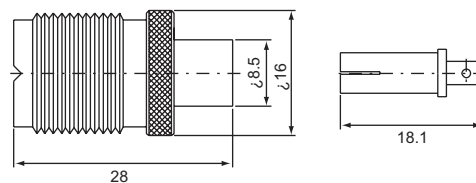
PART NO.	Ω	CABLE TYPE	A	B	C
U-123A	50,75	RG6U	5.6	28.9	26.3
U-123F	50,75	RG58U			
U-123G	50,75	RG59U			

UHF FEMALE, Crimp type
U-211

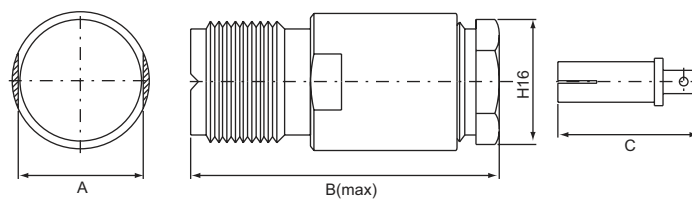


PART NO.	Ω	CABLE TYPE	A	B	C	D
U-211A	50,75	RG6U	33.9	12.7		
U-211B	50,75	RG213U	35.4	13.5	18.1	
U-211B/5D	50,75	5D-2V	33.9	12.7		6.5
U-211F	50,75	RG58U	33.9	12.7		
U-211G	50,75	RG59U	33.9	12.7		

UHF FEMALE, Crimp type
U-211A-1M

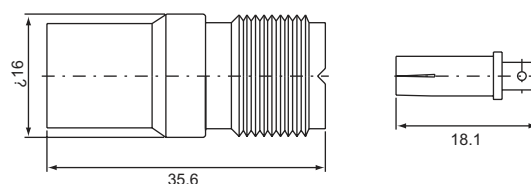


UHF FEMALE, Screw-on type
U-212

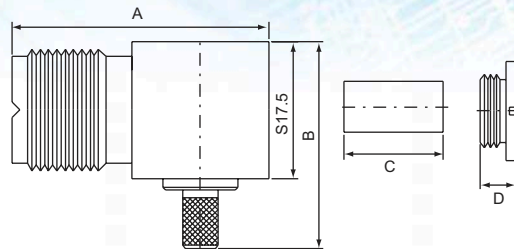


PART NO.	Ω	CABLE TYPE	A	B	C
U-212A	50,75	RG6U	16	39.1	18.1
U-212B		RG231U			
U-212F		RG58U			
U-212G		RG59U			
U-212-5D	50,75	5D-2V	16	38.8	18.1

UHF FEMALE, Attached grip ring
U-214B

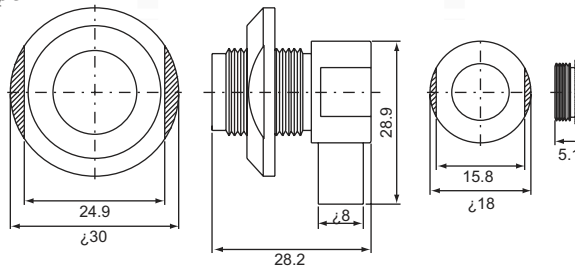


**UHF FEMALE, Crimp type
right angle
U-221**

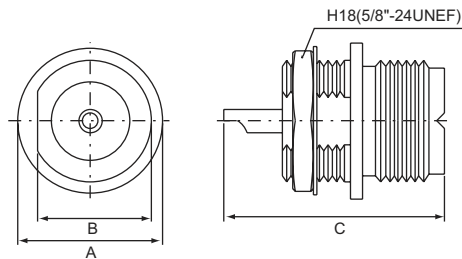


PART NO.	Ω	CABLE TYPE	A	B	C	D
U-211A	50,75	RG6U	32.8	26.5	12.7	4.7
U-211F		RG58U				
U-211G		RG59U				

**UHF FEMALE, Twist-on type
right angle
U-223**

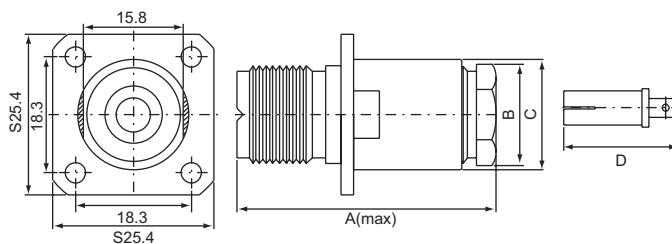


**UHF FEMALE, Solder type
bulkhead receptacle
U-235**



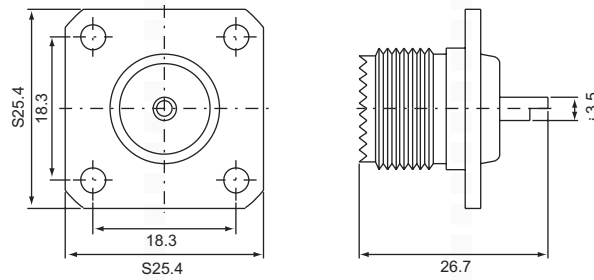
PART NO.	Ω	A	B	C
U-235	50,75	18	14.5	26.9
U-235-1B	50,75	18	14.5	25.4
U-235-ZN	50,75	20	14.5	28.2

**UHF FEMALE, Screw-on type
panel receptacle
U-242**

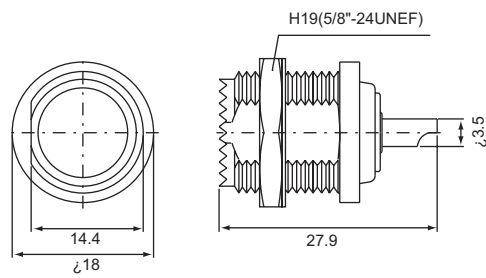


PART NO.	Ω	CABLE TYPE	A	B	C	D
U-242B	50,75	RG213U	40.9	17.5	16	18.1
U-242F	50,75	RG58U	35.4	12.7	11	18.1
U-242G	50,75	RG59U	35.4	12.7	11	18.1

UHF FEMALE, Solder type panel receptacle
U-245



UHF FEMALE, Solder type
U-245-1



UHF FEMALE, Diamond plate
U-2452

